


RNAV (RNP) Z RWY 28L

PITTSBURGH INTL (PIT)

APP CRS	Rwy Ldg	11500
281°	TDZE	1125
	Apt Elev	1203

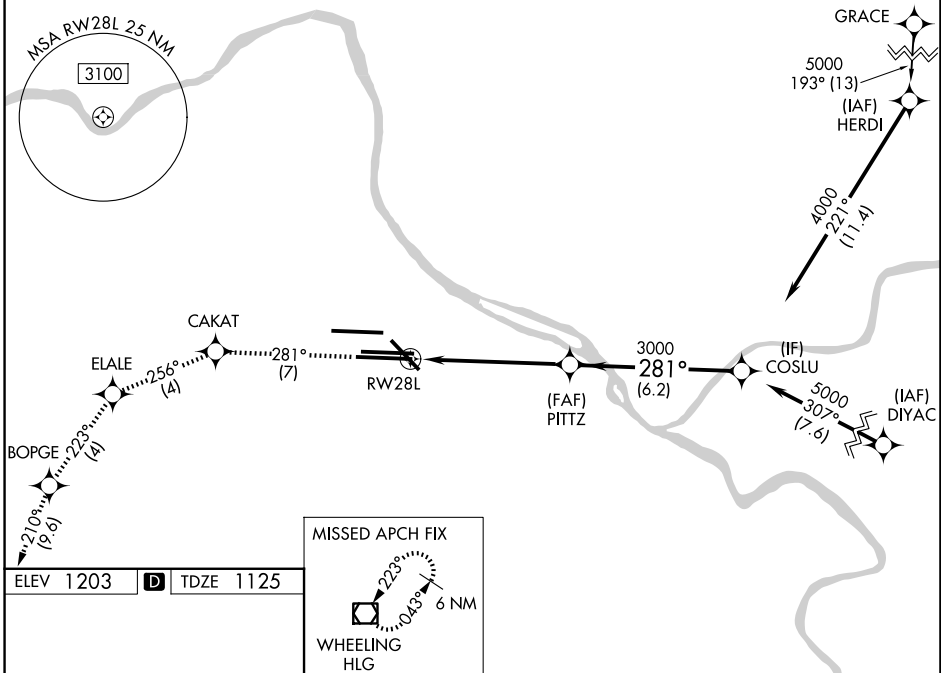
RNP AR APCH - GPS.

▼ For uncompensated Baro-VNAV systems, procedure NA below -18°C or above 54°C. Simultaneous approach authorized. For inop ALS, increase RNP 0.13 all Cats visibility to RVR 6000.

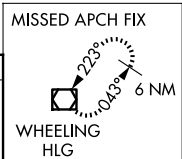
MALSR 

MISSED APPROACH: Climb to 4000 on track 281° to CAKAT and track 256° to ELALE and track 223° to BOPGE and track 210° to HLG VOR/DME and hold.

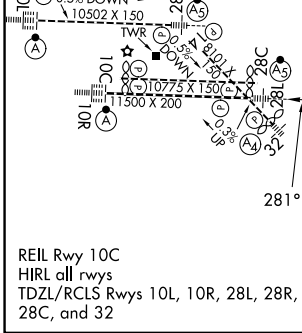
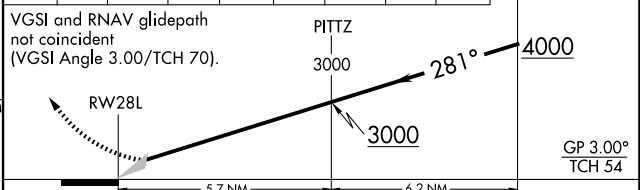
D-ATIS 127.25	PITTSBURGH APP CON 123.95 360.8	PITTSBURGH TOWER 128.3 291.7	GND CON SOUTH 121.9 348.6 NORTH 127.8 348.6
-------------------------	---	--	---



ELEV 1203	D	TDZE 1125
-----------	----------	-----------



4000	↑	tr 281°	CAKAT	tr 256°	ELALE	tr 223°	BOPGE	tr 210°	HLG	COSLU
------	---	---------	-------	---------	-------	---------	-------	---------	-----	-------



CATEGORY	A	B	C	D
RNP 0.13 DA		1529/40	404 (400-¾)	
RNP 0.30 DA		1579/45	454 (400-¾)	

AUTHORIZATION REQUIRED

NE-4, 11 JUN 2026 to 09 JUL 2026

NE-4, 11 JUN 2026 to 09 JUL 2026