

APP CRS <b>325°</b>	Rwy Ldg TDZE Apt Elev	<b>7466</b> <b>1124</b> <b>1203</b>
------------------------	-----------------------------	---

# RNAV (RNP) Z RWY 32

PITTSBURGH INTL (PIT)

RNP AR APCH - GPS.

▼ For uncompensated Baro-VNAV systems, procedure NA below -18°C (0°F) or above 54°C (130°F).

MALS

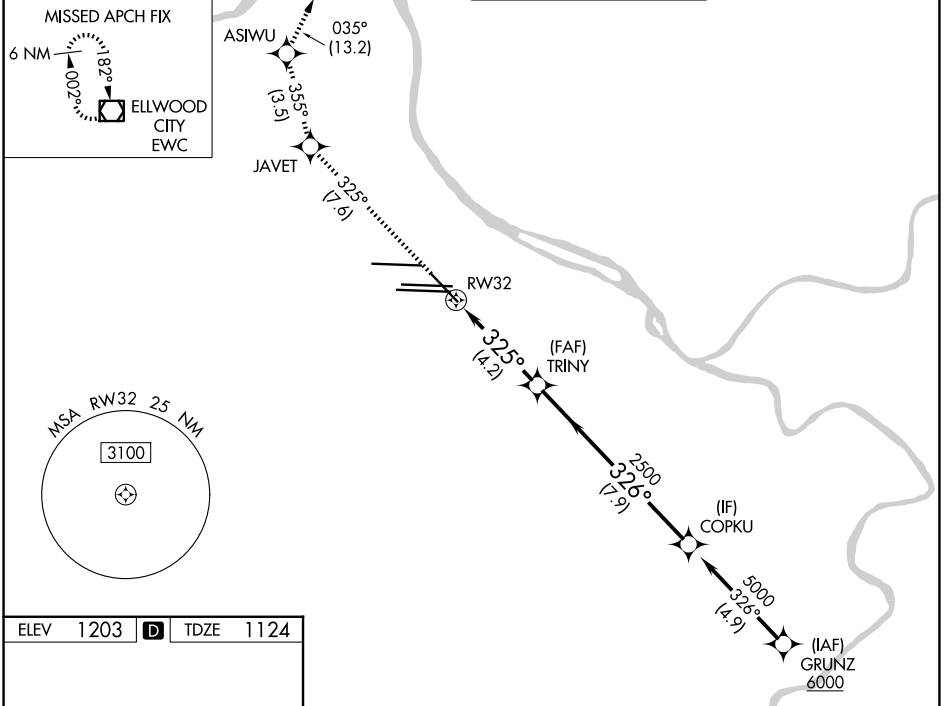
MISSED APPROACH: Climb to 4000 on track 325° to JAVET and track 355° to ASIWU and track 035° to EWC VOR/DME and hold.

D-ATIS  
**127.25**

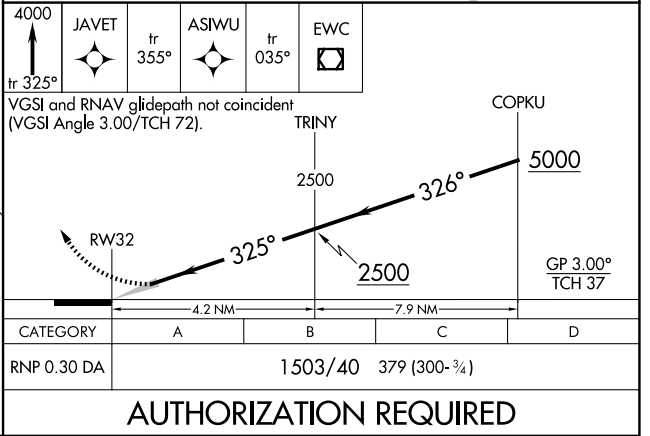
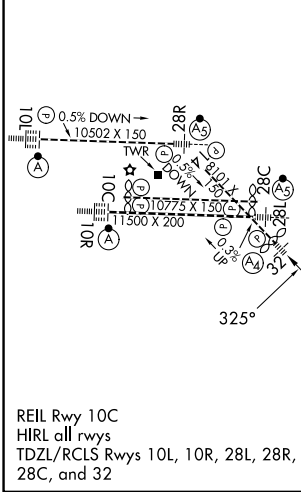
PITTSBURGH APP CON  
**123.95 360.8**

PITTSBURGH TOWER  
**128.3 291.7**

GND CON  
SOUTH **121.9 348.6**  
NORTH **127.8 348.6**



ELEV 1203	<b>D</b>	TDZE 1124
-----------	----------	-----------



NE-4, 11 JUN 2026 to 09 JUL 2026

NE-4, 11 JUN 2026 to 09 JUL 2026