

FSHUN FOUR DEPARTURE (RNAV)

ORLANDO DEP CON
120.15 284.7
D-ATIS DEP
120.525
CLNC DEL
134.7 341.7
CPDLC
GND CON
126.4 (E)
121.8 (W)
ORLANDO TOWER
118.45 253.5 (17L-35R, 17R-35L)
124.3 253.5 (18L-36R, 18R-36L)

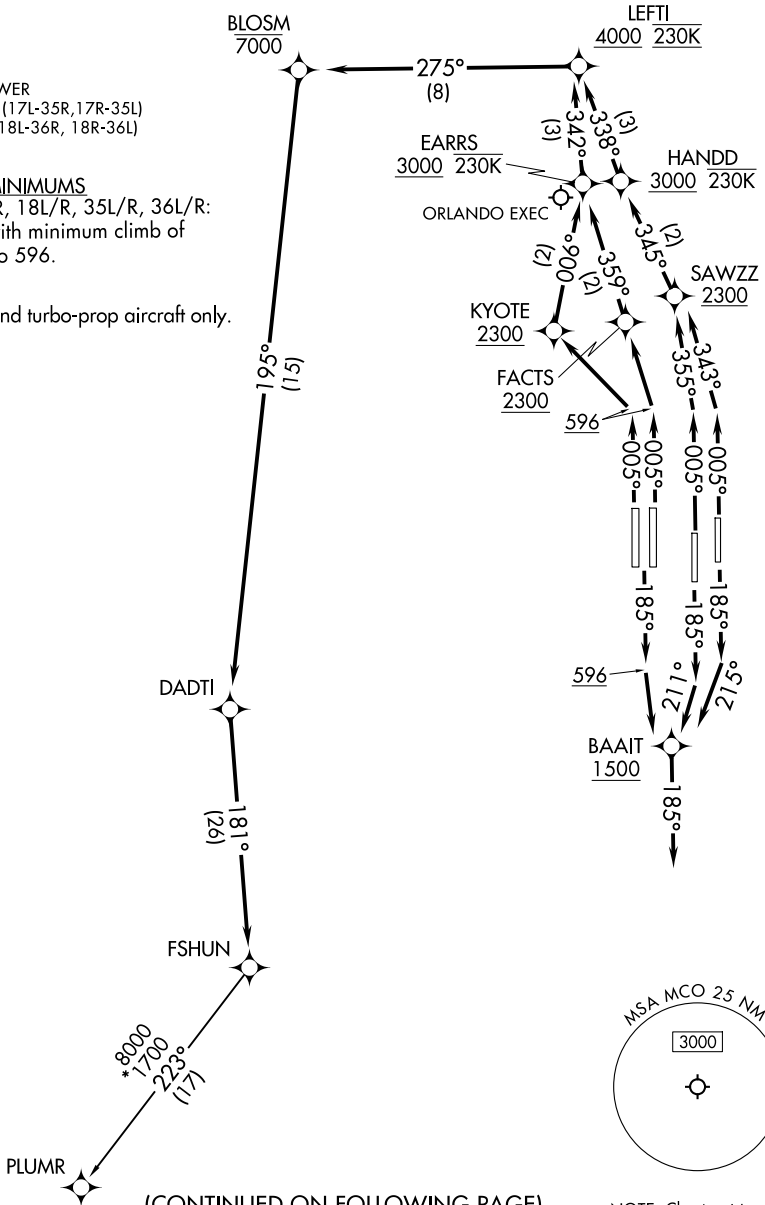
RNAV 1 - DME/DME/IRU or GPS.
RADAR required.
RADAR required for non-GPS equipped aircraft.

**TOP ALTITUDE:
7000**

TAKEOFF MINIMUMS

Rwys 17L/R, 18L/R, 35L/R, 36L/R:
Standard with minimum climb of
500'/NM to 596.

NOTE: Jet and turbo-prop aircraft only.



(CONTINUED ON FOLLOWING PAGE)

NOTE: Chart not to scale.

SE-3, 11 JUN 2026 to 09 JUL 2026

SE-3, 11 JUN 2026 to 09 JUL 2026

FSHUN FOUR DEPARTURE (RNAV)



DEPARTURE ROUTE DESCRIPTION

SEE ADDITIONAL REQUIREMENTS ON AAUP

TAKEOFF RUNWAY 17L: Climb on heading 185° to intercept course 215° to cross BAAIT at or above 1500, then on track 185°, for vectors to FSHUN, thence. . . .

TAKEOFF RUNWAY 17R: Climb on heading 185° to intercept course 211° to cross BAAIT at or above 1500, then on track 185°, for vectors to FSHUN, thence. . . .

TAKEOFF RUNWAYS 18L/R: Climb on heading 185° to 596, then direct BAAIT at or above 1500, then on track 185°, for vectors to FSHUN, thence. . . .

. . . .then on transition, maintain 7000'. Expect filed altitude 10 minutes after departure.

TAKEOFF RUNWAY 35L: Climb on heading 005° to intercept course 355° to cross SAWZZ at or above 2300, then on track 345° to cross HANDD at or above 3000 and at or below 230K, then on track 338° to cross LEFTI at or above 4000 and at 230K, thence. . . .

TAKEOFF RUNWAY 35R: Climb on heading 005° to intercept course 343° to cross SAWZZ at or above 2300, then on track 345° to cross HANDD at or above 3000 and at or below 230K, then on track 338° to cross LEFTI at or above 4000 and at 230K, thence. . . .

TAKEOFF RUNWAY 36L: Climb on heading 005° to 596, then direct KYOTE at or above 2300, then on track 006° to cross EARRS at or above 3000 and at or below 230K, then on track 342° to cross LEFTI at or above 4000 and at 230K, thence. . . .

TAKEOFF RUNWAY 36R: Climb on heading 005° to 596, then direct FACTS at or above 2300, then on track 359° to cross EARRS at or above 3000 and at or below 230K, then on track 342° to cross LEFTI at or above 4000 and at 230K, thence. . . .

. . . .then on track 275° to cross BLOSM at or below 7000, then on track 195° to DADTI, then on track 181° to FSHUN, then on transition, maintain 7000'. Expect filed altitude 10 minutes after departure.

ALL AIRCRAFT: ATC climb gradients: if unable to accept climb gradients rates advise ATC prior to taxi. RUNWAY 36L: 599'/NM to 2300, RUNWAY 36R: 589'/NM to 2300.

PLUMR TRANSITION (FSHUN4.PLUMR)

SE-3, 11 JUN 2026 to 09 JUL 2026

SE-3, 11 JUN 2026 to 09 JUL 2026