

LOC/DME I-ARK 110.95 Chan 46(Y)	APP CRS 185°	Rwy Ldg 9001 TDZE 90 Apt Elev 96
--	------------------------	---

ILS RWY 17L (SA CAT I)

ORLANDO INTL (MCO)

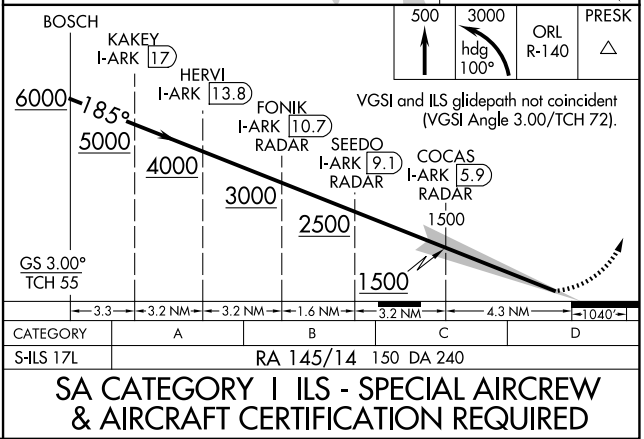
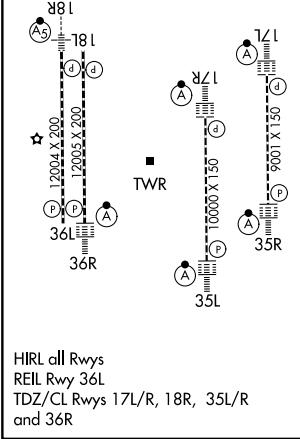
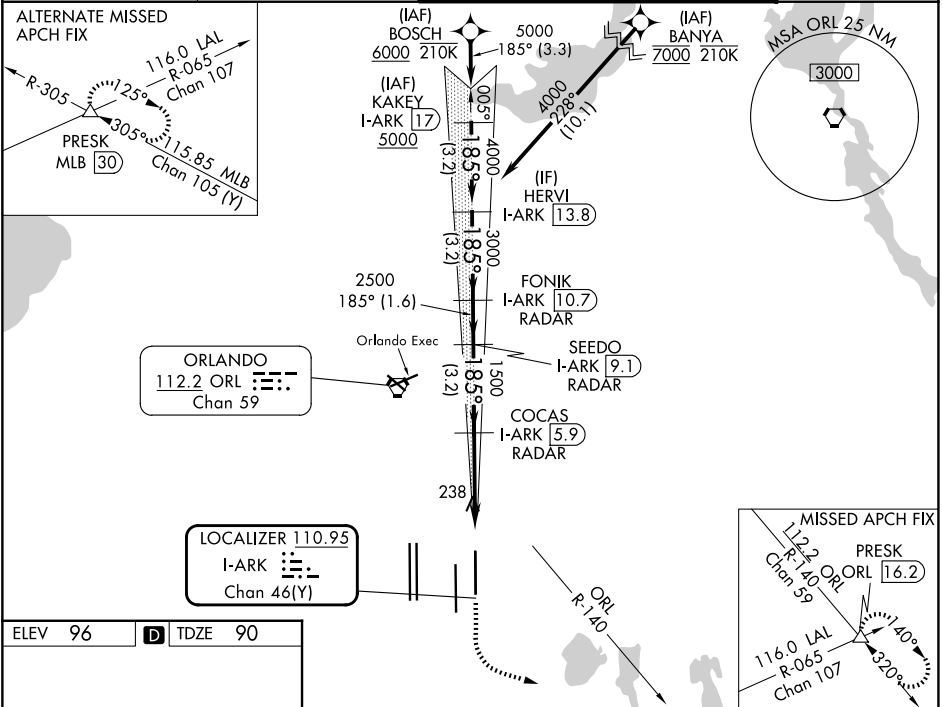
RNAV 1-DME/DME/IRU or GPS or RADAR required for procedure entry. DME or RADAR required.

▼ Bright lights on highway midway between Rwy 17L and Rwy 17R may be mistaken for runway lights. Simultaneous approach authorized. Requires specific OPSPEC, MSPEC, or LOA approval.

ALSF-2

MISSED APPROACH: Climb to 500 then climbing left turn to 3000 on heading 100° and ORL VORTAC R-140 to PRESK INT/ORL 16.2 DME and hold, continue climb-in-hold to 3000.

D-ATIS 121.25	ORLANDO APP CON 124.8 307.0	ORLANDO TOWER 118.45 253.5 (17L/35R, 17R/35L) 124.3 253.5 (18L/36R, 18R/36L)	GND CON 126.4 (E) 121.8 (W)
-------------------------	---------------------------------------	--	---



SE-3, 11 JUN 2026 to 09 JUL 2026

SE-3, 11 JUN 2026 to 09 JUL 2026