

LOC/DME I-CER 111.15 Chan 48 (Y)	APP CRS 005°	Rwy Ldg 9000 TDZE 90 Apt Elev 96
--	------------------------	---

ILS RWY 35R (SA CAT I)

ORLANDO INTL (MCO)

From HAHNA: RNAV1- DME/DME/IRU or GPS required. Aircraft not DME/DME/IRU or GPS equipped-RADAR required for procedure entry.



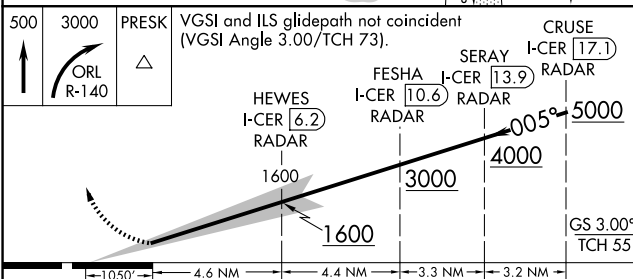
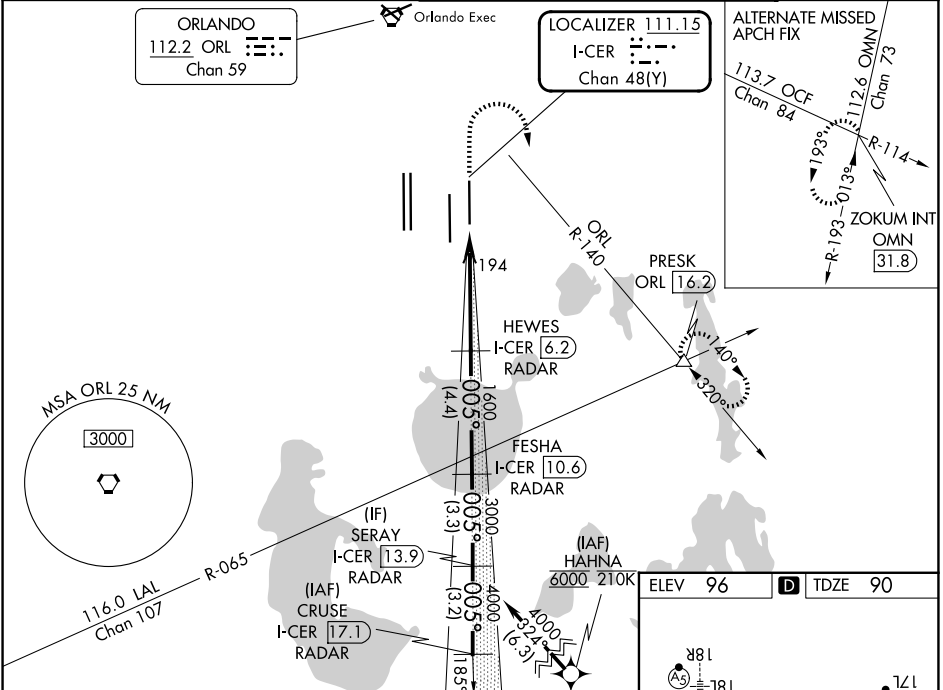
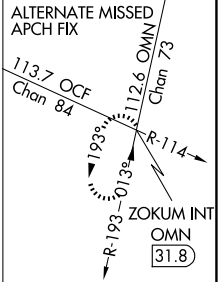
MISSED APPROACH: Climb to 500 then climbing right turn to 3000 on ORL VORTAC R-140 to PRESK INT/ ORL 16.2 DME and hold, continue climb-in-hold to 3000.

Simultaneous approach authorized. Requires specific OPSPEC, MSPEC, or LOA approval. Bright lights on highway midway between Rwy 35L and Rwy 35R may be mistaken for runway lights. When using alternate missed approach, simultaneous approach NA.

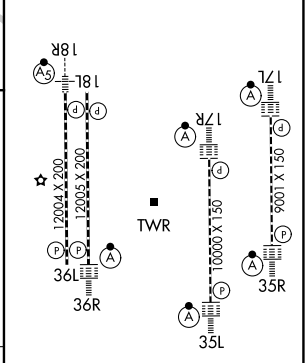
D-ATIS 121.25	ORLANDO APP CON 124.8 307.0	ORLANDO TOWER 118.45 253.5 (17L/35R, 17R/35L) 124.3 253.5 (18L/36R, 18R/36L)	GND CON 126.4 (E) 121.8 (W)
-------------------------	---------------------------------------	--	---

ORLANDO
112.2 ORL
Chan 59

LOCALIZER **111.15**
I-CER
Chan 48 (Y)



ELEV 96	TDZE 90
---------	---------



CATEGORY	A	B	C	D
S-ILS 35R	RA 157/14 150 DA 240			

SA CATEGORY I ILS - SPECIAL AIRCREW & AIRCRAFT CERTIFICATION REQUIRED

HIRL all Rwy's
REIL Rwy 36L
TDZ/CL Rwy's 17L/R, 18R,
35L/R and 36R

SE-3, 11 JUN 2026 to 09 JUL 2026

SE-3, 11 JUN 2026 to 09 JUL 2026