

LOC/DME I-OJP <b>110.7</b> Chan <b>44</b>	APP CRS <b>005°</b>	Rwy Ldg <b>11601</b> TDZE <b>92</b> Apt Elev <b>96</b>
---	------------------------	--

# ILS RWY 36R (CAT II & III)

ORLANDO INTL (MCO)

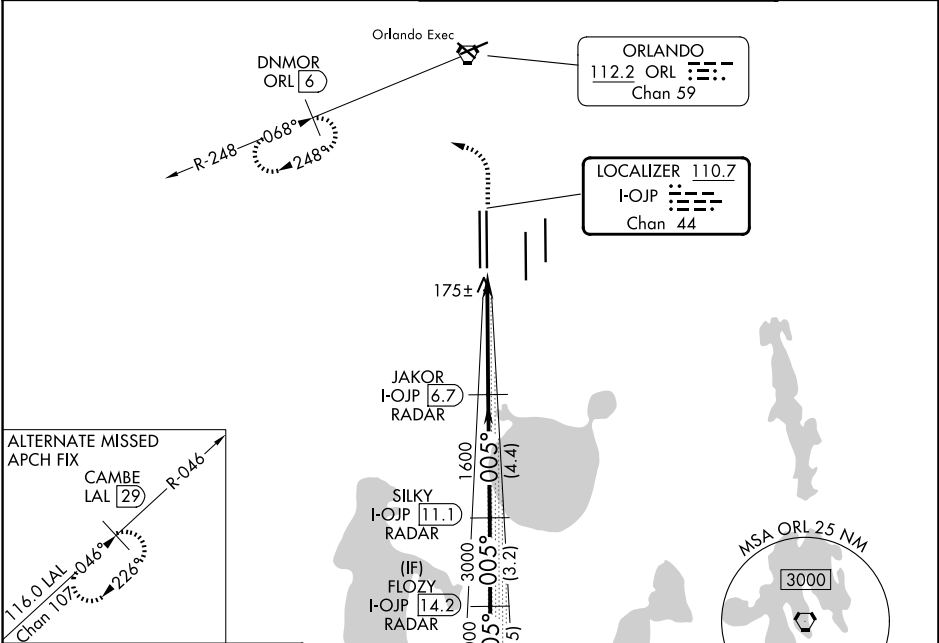
RADAR required for procedure entry. DME or RADAR required.

ALSF-2

MISSED APPROACH: Climb to 500 then climbing left turn to 3000 on heading 309° and ORL R-248 to DNMOR/ORL 6 DME and hold, continue climb-in-hold to 3000.

Simultaneous approach authorized.

D-ATIS <b>121.25</b>	ORLANDO APP CON <b>124.8 307.0</b>	ORLANDO TOWER <b>118.45 253.5</b> (17L/35R, 17R/35L) <b>124.3 253.5</b> (18L/36R, 18R/36L)	GND CON <b>126.4</b> (E) <b>121.8</b> (W)
-------------------------	---------------------------------------	--	---

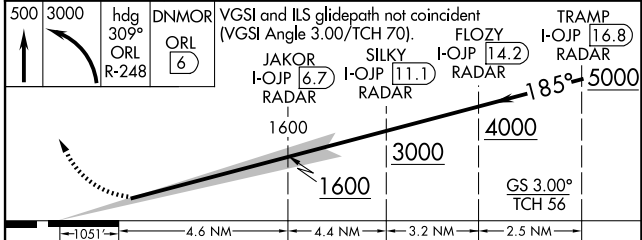


ELEV 96	D	TDZE 92
---------	---	---------

HIRL all Rws  
REIL Rwy 36L  
TDZ/CL Rws 17L/R, 18R,  
35L/R, and 36R

TWR

36R 35L 35R 17L



CATEGORY	A	B	C	D
S-ILS 36R	CAT II RA 106/12 100 DA 192			
S-ILS 36R	CAT III RVR 06			

**CATEGORY II & III ILS - SPECIAL AIRCREW & AIRCRAFT CERTIFICATION REQUIRED**

SE-3, 11 JUN 2026 to 09 JUL 2026

SE-3, 11 JUN 2026 to 09 JUL 2026