

LOC/DME I-DDO <b>110.5</b> Chan 42	APP CRS <b>005°</b>	Rwy Ldg TDZE <b>88</b> Apt Elev <b>96</b>
--	------------------------	---

# ILS or LOC RWY 35L

ORLANDO INTL (MCO)

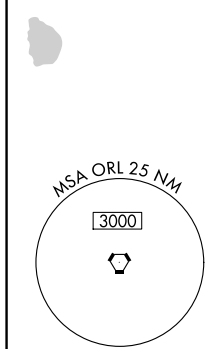
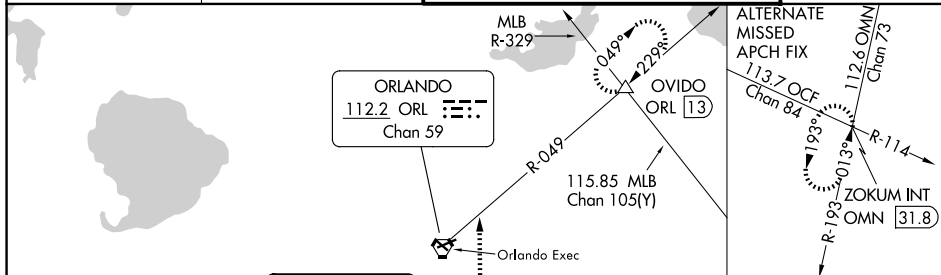
**RADAR** required for procedure entry. DME or RADAR required.

▲ Bright lights on highway midway between Rwy 35L and Rwy 35R may be mistaken for runway lights. Simultaneous approach authorized. When using alternate missed approach, simultaneous approach NA.

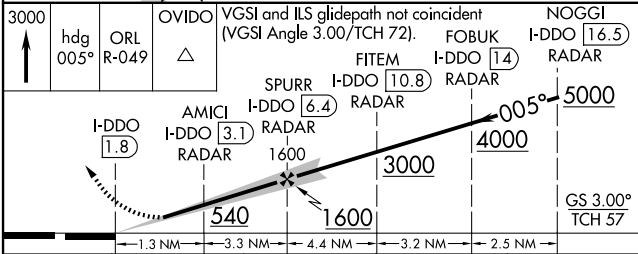
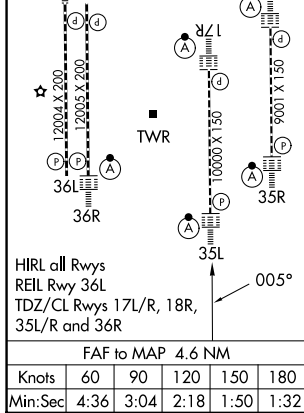
ALSF-2

MISSED APPROACH: Climb to 3000 on heading 005° and ORL VORTAC R-049 to OVIDO INT/ORL 13 DME and hold.

D-ATIS <b>121.25</b>	ORLANDO APP CON <b>124.8 307.0</b>	ORLANDO TOWER <b>118.45 253.5</b> (17L/35R, 17R/35L) <b>124.3 253.5</b> (18L/36R, 18R/36L)	GND CON <b>126.4</b> (E) <b>121.8</b> (W)
-------------------------	---------------------------------------	--	---



ELEV 96	<b>D</b>	TDZE 88
---------	----------	---------



CATEGORY	A	B	C	D
S-ILS 35L	288/18 200 (200-½)			
S-LOC 35L	420/24	332 (400-½)	420/26	332 (400-½)
CIRCLING	740-1	644 (700-1)	740-1¾ 644 (700-1¾)	740-2 644 (700-2)

SE-3, 11 JUN 2026 to 09 JUL 2026

SE-3, 11 JUN 2026 to 09 JUL 2026