

LOC/DME I-CER <b>111.15</b> Chan 48(Y)	APP CRS <b>005°</b>	Rwy Ldg <b>9001</b> TDZE <b>90</b> Apt Elev <b>96</b>
--	------------------------	---

# ILS or LOC RWY 35R

ORLANDO INTL (MCO)

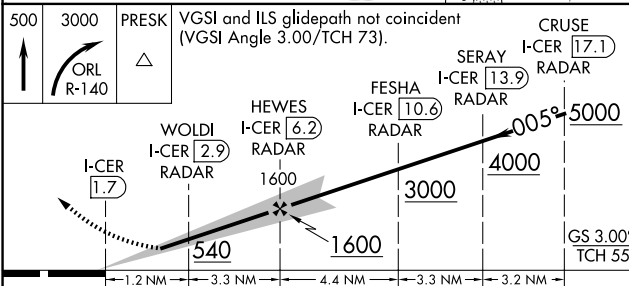
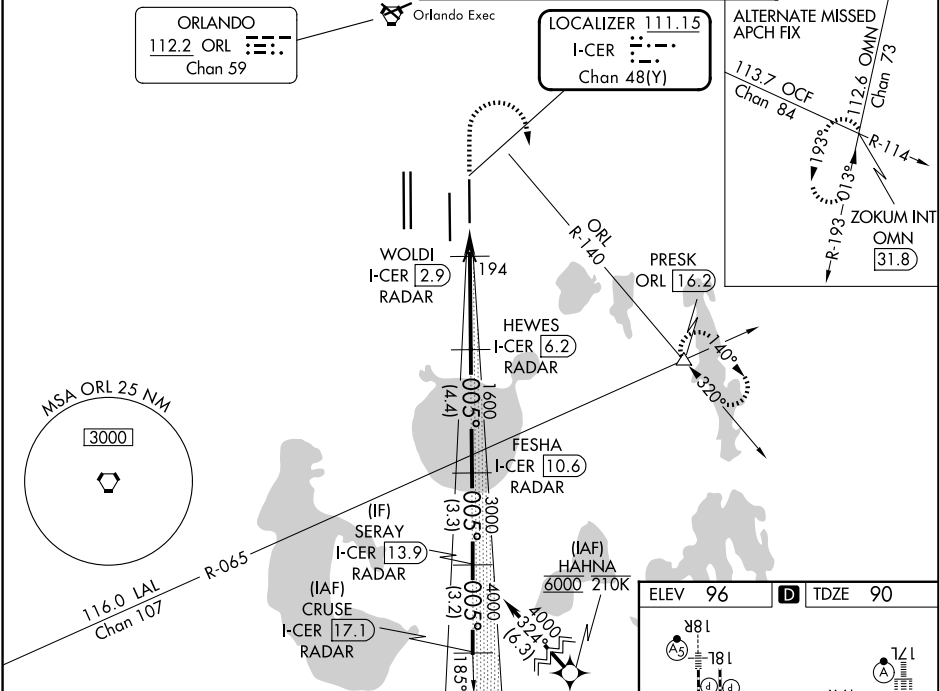
From HAHNA: RNAV 1-DME/DME/IRU or GPS required.  
Aircraft not DME/DME/IRU or GPS equipped-RADAR required for procedure entry.  
DME or RADAR required for LOC only.

Simultaneous approach authorized. Bright lights on highway midway between Rwy 35L and Rwy 35R may be mistaken for runway lights. For inop ALS, increase S-LOC 35R Cats C/D visibility to RVR 5500. When using alternate missed approach, simultaneous approach NA.

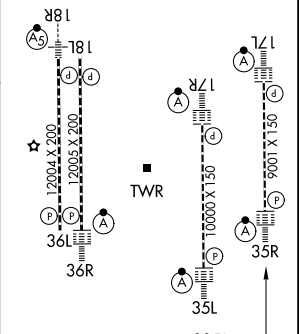
ALSF-2

MISSED APPROACH: Climb to 500 then climbing right turn to 3000 on ORL VORTAC R-140 to PRESK INT/ORL 16.2 DME and hold, continue climb-in-hold to 3000.

D-ATIS <b>121.25</b>	ORLANDO APP CON <b>124.8 307.0</b>	ORLANDO TOWER <b>118.45 253.5</b> (17L/35R, 17R/35L) <b>124.3 253.5</b> (18L/36R, 18R/36L)	GND CON <b>126.4</b> (E) <b>121.8</b> (W)
-------------------------	---------------------------------------	--	---



ELEV 96	TDZE 90
---------	---------



CATEGORY	A	B	C	D
S-ILS 35R	290/18 200 (200-½)			
S-LOC 35R	460/24	370 (400-½)	460/35	370 (400-¾)
CIRCLING	740-1	644 (700-1)	740-1¾	740-2
			644 (700-1¾)	644 (700-2)

SE-3, 11 JUN 2026 to 09 JUL 2026

SE-3, 11 JUN 2026 to 09 JUL 2026