

ILS or LOC RWY 36R

ORLANDO INTL (MCO)

LOC/DME I-OJP 110.7 Chan 44	APP CRS 005°	Rwy Ldg 11601 TDZE 92 Apt Elev 96
---	------------------------	--

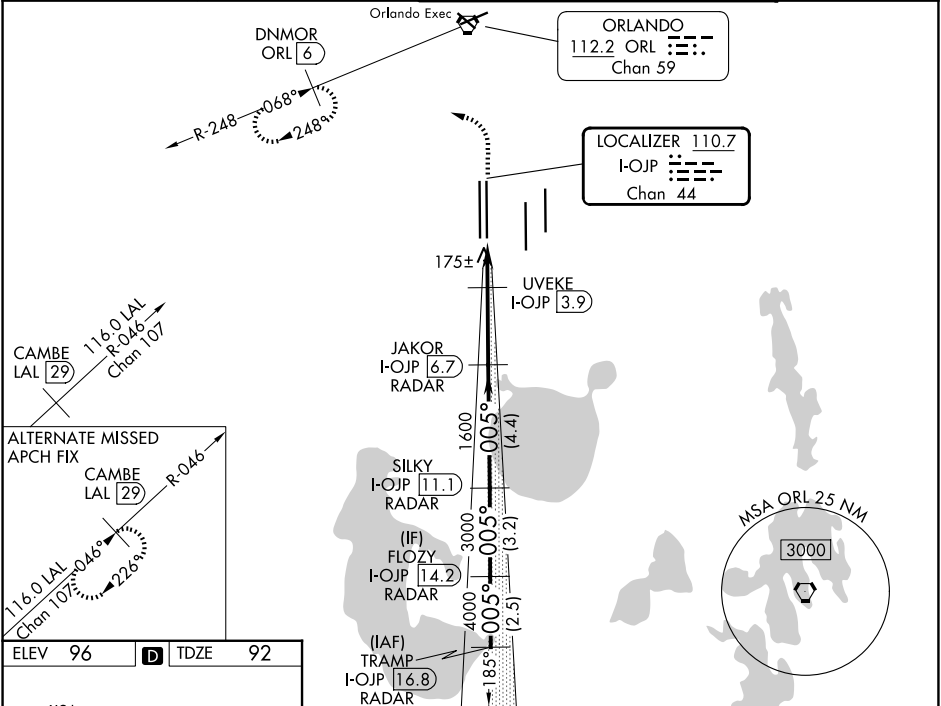
RADAR required for procedure entry. DME or RADAR required.

Simultaneous approach authorized.

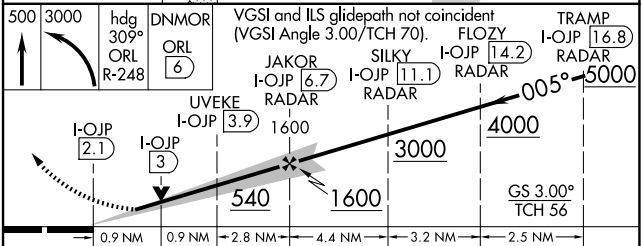
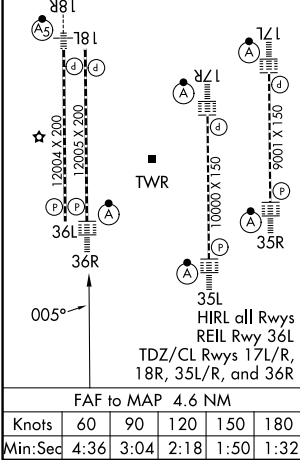
ALSIF-2

MISSED APPROACH: Climb to 500 then climbing left turn to 3000 on heading 309° and ORL VORTAC R-248 to DNMOR/ORL 6 DME and hold, continue climb-in-hold to 3000.

D-ATIS 121.25	ORLANDO APP CON 124.8 307.0	ORLANDO TOWER 118.45 253.5 (17L/35R, 17R/35L) 124.3 253.5 (18L/36R, 18R/36L)	GND CON 126.4 (E) 121.8 (W)
-------------------------	---------------------------------------	--	---



ELEV 96	D	TDZE 92
---------	----------	---------



CATEGORY	A	B	C	D
S-ILS 36R	292/18 200 (200-½)			
S-LOC 36R	540/24	448 (500-½)	540/45	448 (500-¾)
CIRCLING	740-1	644 (700-1)	740-1¾ 644 (700-1¾)	740-2 644 (700-2)
UVEKE FIX MINIMUMS (DME REQUIRED)				
S-LOC 36R	440/24	348 (400-½)	440/30	348 (400-¾)
CIRCLING	740-1	644 (700-1)	740-1¾ 644 (700-1¾)	740-2 644 (700-2)

SE-3, 11 JUN 2026 to 09 JUL 2026

SE-3, 11 JUN 2026 to 09 JUL 2026