

MZULO THREE DEPARTURE (RNAV)
 (MZULO3.MZULO) 19MAY22

ORLANDO, FLORIDA
 ORLANDO INTL (MCO)

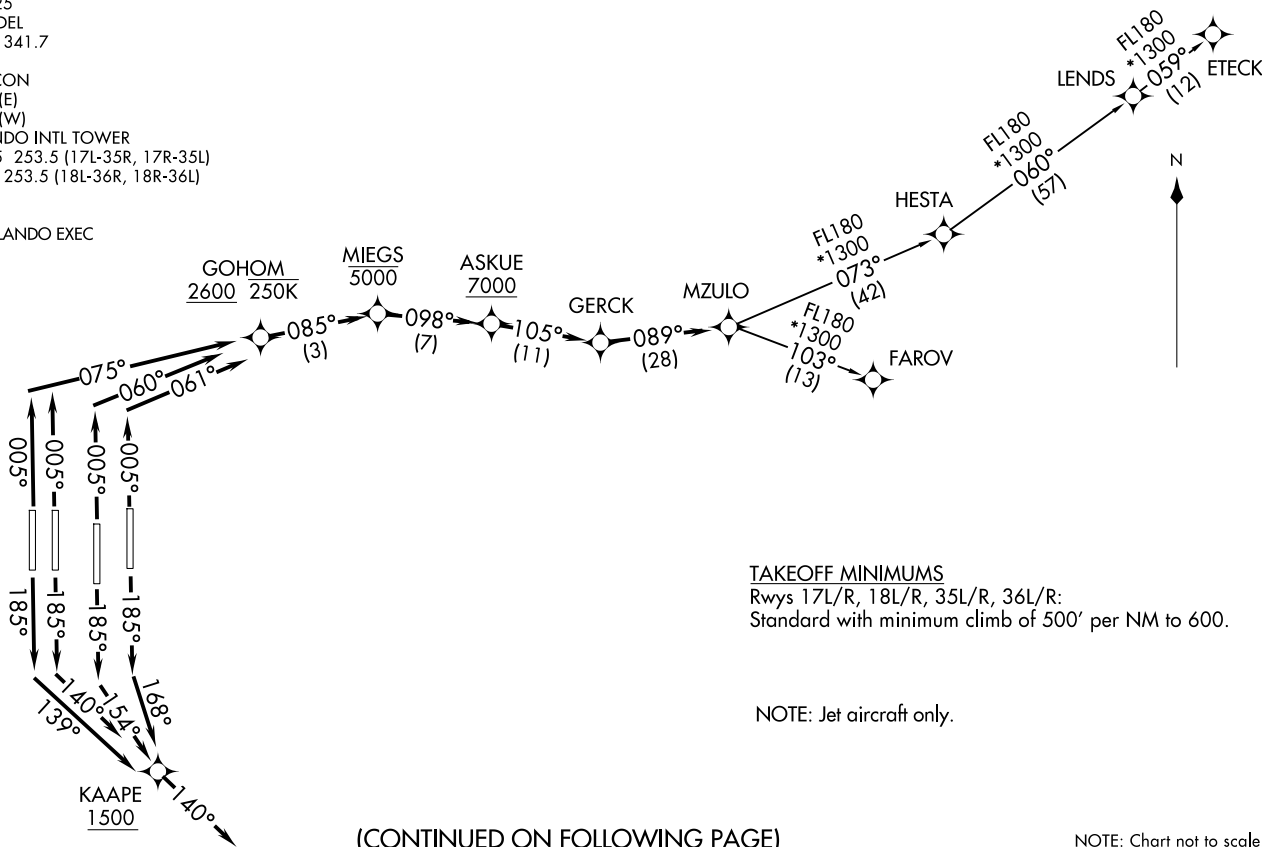
ORLANDO DEP CON
 124.8 307.0
 D-ATIS DEP
 120.525
 CLNC DEL
 134.7 341.7
 CPDLC
 GND CON
 126.4 (E)
 121.8 (W)
 ORLANDO INTL TOWER
 118.45 253.5 (17L-35R, 17R-35L)
 124.3 253.5 (18L-36R, 18R-36L)

 ORLANDO EXEC

RNAV 1 - DME/DME/IRU or GPS.

RADAR required.

**TOP ALTITUDE:
7000**



(CONTINUED ON FOLLOWING PAGE)

NOTE: Chart not to scale.

MZULO THREE DEPARTURE (RNAV)
 (MZULO3.MZULO) 25219

ORLANDO INTL (MCO)
 ORLANDO, FLORIDA

AL-571 (FAA)

MZULO THREE DEPARTURE (RNAV)



DEPARTURE ROUTE DESCRIPTION SEE ADDITIONAL REQUIREMENTS ON AAUP

TAKEOFF RUNWAY 17L: Climb on heading 185° to intercept course 168° to cross KAAPE at or above 1500, then on track 140°, for vectors to GERCK, thence. . .

TAKEOFF RUNWAY 17R: Climb on heading 185° to intercept course 154° to cross KAAPE at or above 1500, then on track 140°, for vectors to GERCK, thence. . .

TAKEOFF RUNWAY 18L: Climb on heading 185° to intercept course 140° to cross KAAPE at or above 1500, then on track 140°, for vectors to GERCK, thence. . .

TAKEOFF RUNWAY 18R: Climb on heading 185° to intercept course 139° to cross KAAPE at or above 1500, then on track 140°, for vectors to GERCK, thence. . .

TAKEOFF RUNWAY 35L: Climb on heading 005° to intercept course 060° to cross GOHOM at or above 2600 and at or below 250K, then on track 085° to cross MIEGS at or below 5000, then on track 098° to cross ASKUE at or above 7000, then on track 105° to GERCK, thence. . .

TAKEOFF RUNWAY 35R: Climb on heading 005° to intercept course 061° to cross GOHOM at or above 2600 and at or below 250K, then on track 085° to cross MIEGS at or below 5000, then on track 098° to cross ASKUE at or above 7000, then on track 105° to GERCK, thence. . .

TAKEOFF RUNWAYS 36L/R: Climb on heading 005° to intercept course 075° to cross GOHOM at or above 2600 and at or below 250K, then on track 085° to cross MIEGS at or below 5000, then on track 098° to cross ASKUE at or above 7000, then on track 105° to GERCK, thence ...

... on track 089° to MZULO. Maintain 7000. Expect clearance to filed altitude 10 minutes after departure.

ETECK TRANSITION (MZULO3.ETECK)

FAROV TRANSITION (MZULO3.FAROV)

LENDS TRANSITION (MZULO3.LENDS)

SE-3, 11 JUN 2026 to 09 JUL 2026

SE-3, 11 JUN 2026 to 09 JUL 2026