

WAAS CH 66012 W18A	APP CRS 185°	Rwy Ldg 12004 TDZE 96 Apt Elev 96
--	------------------------	--

RNAV (GPS) RWY 18L

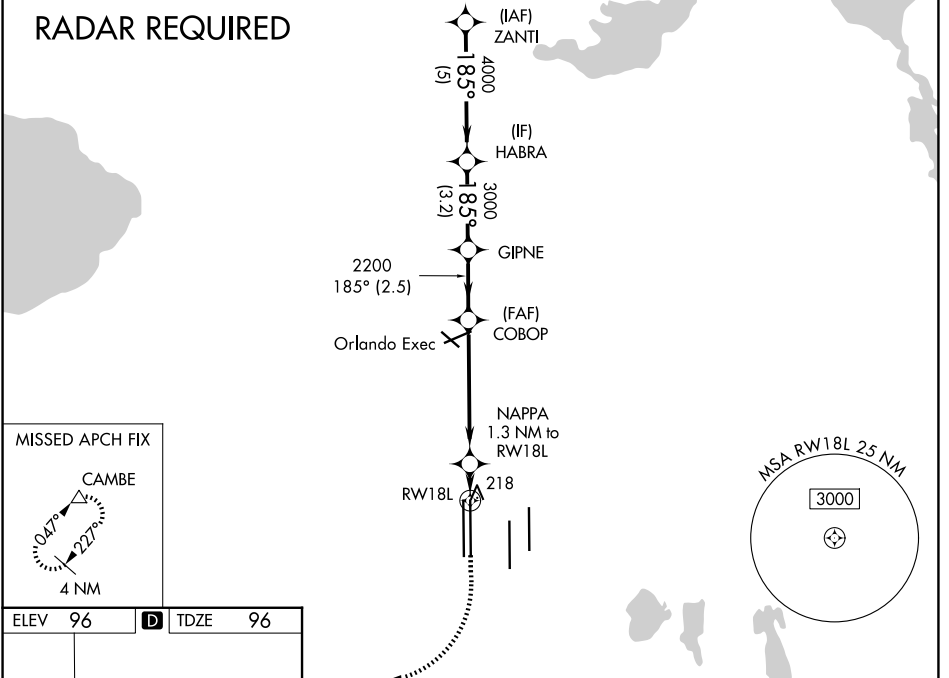
ORLANDO INTL (MCO)

▽ For uncompensated Baro-VNAV systems, LNAV/VNAV NA below -1°C (31°F) or above 54°C (130°F). DME/DME RNP-0.3 NA. Simultaneous approach authorized with Rwy 17L/R. LNAV procedure NA during simultaneous operations. Use of FD or AP providing RNAV track guidance required during simultaneous operations.

MISSED APPROACH: Climb to 500 then climbing right turn to 4000 direct CAMBE and hold, continue climb-in-hold to 4000.

D-ATIS 121.25	ORLANDO APP CON 124.8 307.0	ORLANDO TOWER 118.45 253.5 (17L/35R, 17R/35L) 124.3 253.5 (18L/36R, 18R/36L)	GND CON 126.4 (E) 121.8 (W)
-------------------------	---------------------------------------	--	---

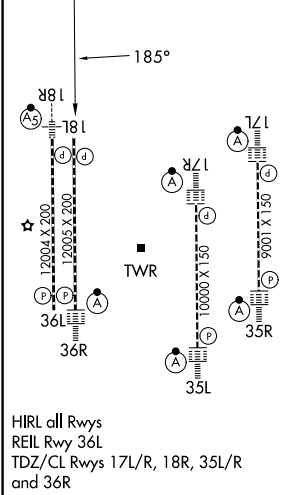
RADAR REQUIRED



SE-3, 11 JUN 2026 to 09 JUL 2026

SE-3, 11 JUN 2026 to 09 JUL 2026

ELEV 96	D	TDZE 96
----------------	----------	----------------



ORLANDO, FLORIDA
Amdt 1 05FEB15

VGSI and RNAV glidepath not coincident (VGSI Angle 3.00/TCH 71).

	ZANTI	HABRA	GIPNE	COBOP	NAPPA	RWY 18L
Altitude	4000	4000	3000	2200	2200	218
Distance	5 NM	3.2 NM	2.5 NM	5.2 NM	1.3 NM	
Category	A	B	C	D		
LPV DA		296/40	200 (200-¾)			
LNAV/VNAV DA		398/50	302 (400-1)			
LNAV MDA	480/55	384 (400-1)	480/60	384 (400-1¼)		
CIRCLING	740-1	644 (700-1)	740-1¾	644 (700-1¾)	740-2	644 (700-2)

28°26'N-81°19'W

ORLANDO INTL (MCO)

RNAV (GPS) RWY 18L