

APP CRS	Rwy Ldg	<b>9001</b>
<b>005°</b>	TDZE	<b>90</b>
	Apt Elev	<b>96</b>

# RNAV (RNP) Z RWY 35R

ORLANDO INTL (MCO)

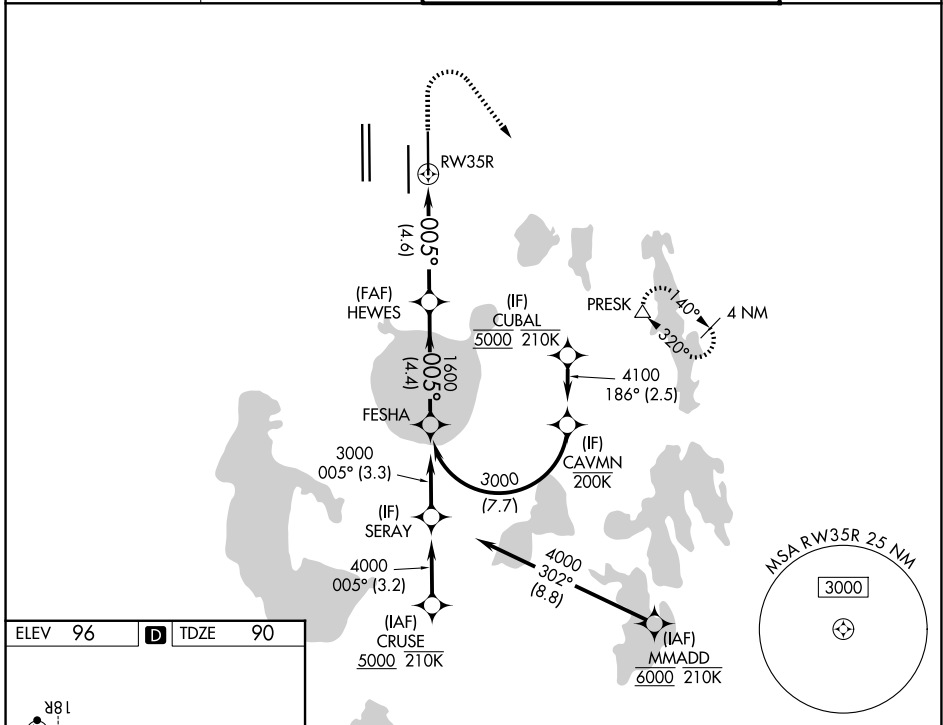
RNP AR APCH - GPS. Authorization required. From CAVMN: RF.

Simultaneous approach authorized. For uncompensated Baro-VNAV systems, procedure NA below 2°C or above 54°C. For inop ALS, increase RNP 0.13 all Cats visibility to RVR 4500.

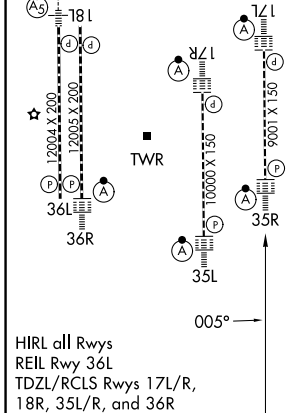
ALS-2

MISSED APPROACH: Climb to 500 then climbing right turn to 3000 direct PRESK and hold, continue climb-in-hold to 3000.

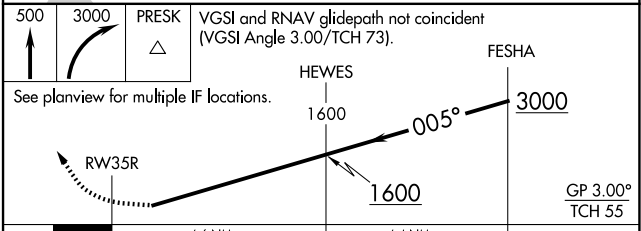
D-ATIS	ORLANDO APP CON	ORLANDO TOWER	GND CON
<b>121.25</b>	<b>124.8 307.0</b>	<b>118.45 253.5</b> (17L/35R, 17R/35L) <b>124.3 253.5</b> (18L/36R, 18R/36L)	<b>126.4</b> (E) <b>121.8</b> (W)



ELEV	<b>96</b>	<b>D</b>	TDZE	<b>90</b>
------	-----------	----------	------	-----------



HIRL all Rwys  
REIL Rwy 36L  
TDZL/RCLS Rwys 17L/R,  
18R, 35L/R, and 36R



CATEGORY	A	B	C	D
RNP 0.13 DA		360/24	270 (300-½)	
RNP 0.30 DA		430/26	340 (400-½)	

**AUTHORIZATION REQUIRED**

SE-3, 11 JUN 2026 to 09 JUL 2026

SE-3, 11 JUN 2026 to 09 JUL 2026