

WAAS CH 69214 W17B	APP CRS 185°	Rwy Ldg TDZE 90 Apt Elev 96
--	------------------------	---

RNAV (GPS) Y RWY 17L

ORLANDO INTL (MCO)

RNP APCH - GPS.

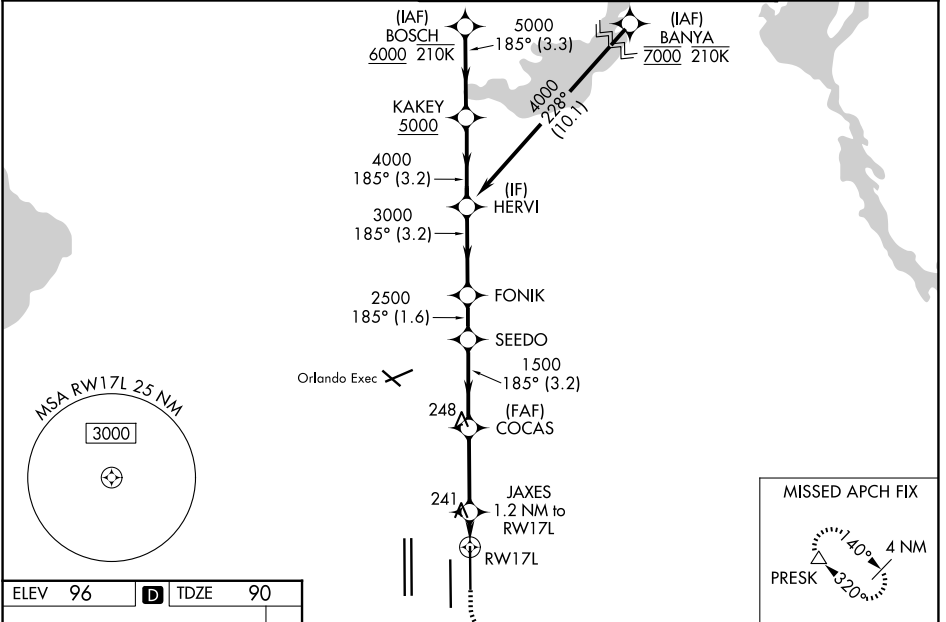
▼ For uncompensated Baro-VNAV systems, LNAV/VNAV NA below 1°C or above 54°C. LNAV procedure NA during simultaneous operations. Use of FD or AP required during simultaneous operations. Simultaneous approach authorized. Bright lights on highway midway between Rwy 17L and Rwy 17R may be mistaken for runway lights. For inop ALS, increase LNAV Cats C/D visibility to RVR 6000.

ALSF-2

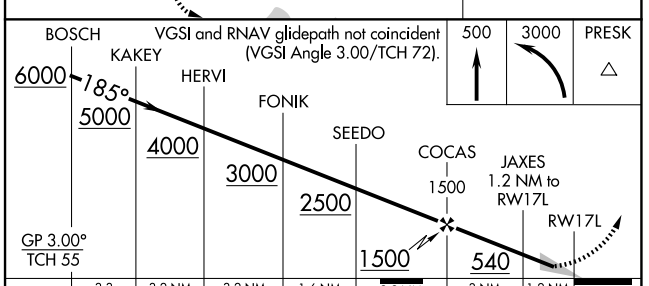
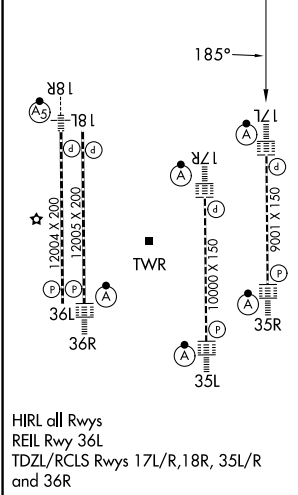


MISSED APPROACH:
Climb to 500 then climbing left turn to 3000 direct PRESK and hold, continue climb-in-hold to 3000.

D-ATIS 121.25	ORLANDO APP CON 124.8 307.0	ORLANDO TOWER 118.45 253.5 (17L/35R, 17R/35L) 124.3 253.5 (18L/36R, 18R/36L)	GND CON 126.4 (E) 121.8 (W)
-------------------------	---------------------------------------	--	---



ELEV 96	D	TDZE 90
---------	----------	---------



	A	B	C	D
CATEGORY	A	B	C	D
LPV DA		290/18	200 (200-1/2)	
LNAV/VNAV DA		513/40	423 (500-3/4)	
LNAV MDA	500/24	410 (500-1/2)	500/40	410 (500-3/4)
CIRCLING	740-1	644 (700-1)	740-1 3/4 644 (700-1 3/4)	740-2 644 (700-2)

SE-3, 11 JUN 2026 to 09 JUL 2026

SE-3, 11 JUN 2026 to 09 JUL 2026