

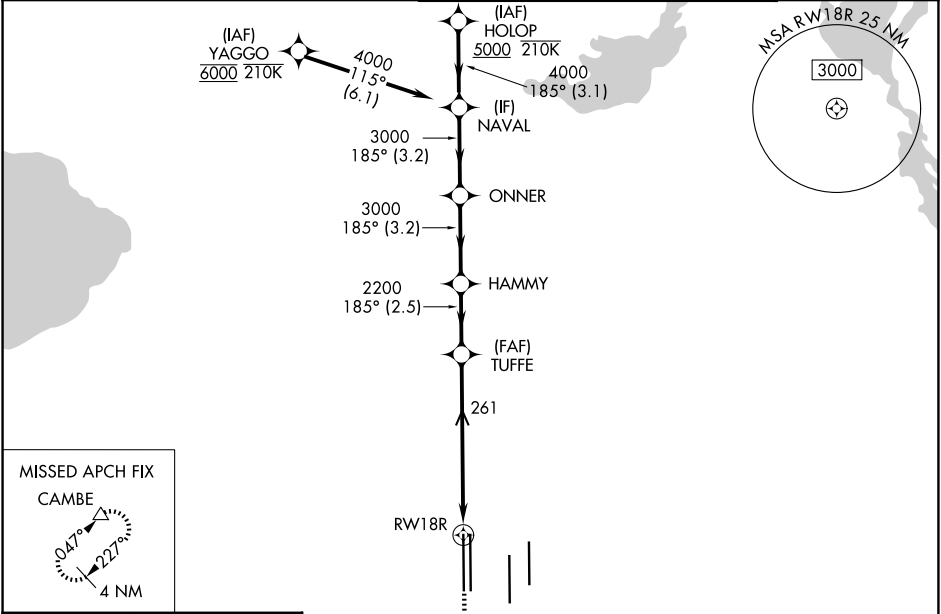
WAAS CH 63212 W18B	APP CRS 185°	Rwy Ldg 12004 TDZE 94 Apt Elev 96
--	------------------------	--

RNAV (GPS) Y RWY 18R

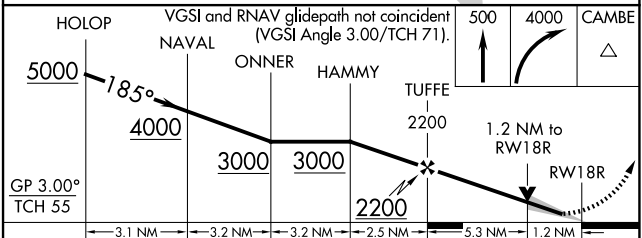
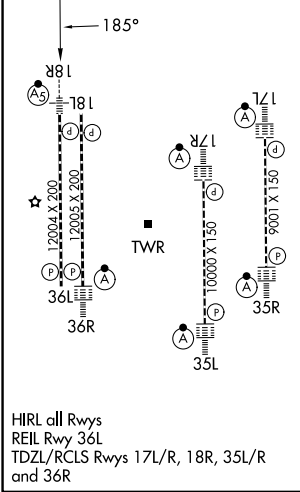
ORLANDO INTL (MCO)

RNP APCH - GPS.	MALSR	MISSED APPROACH: Climb to 500 then climbing right turn to 4000 direct CAMBE and hold, continue climb-in-hold to 4000.
<p>▼ For uncompensated Baro-VNAV systems, LNAV/VNAV NA below 1°C or above 54°C. LNAV procedure NA during simultaneous operations. Use of FD or AP required during simultaneous operations. Simultaneous approach authorized. For inop ALS, increase LNAV/VNAV all Cats visibility to RVR 4500.</p>		

D-ATIS 121.25	ORLANDO APP CON 124.8 307.0	ORLANDO TOWER 118.45 253.5 (17L/35R, 17R/35L) 124.3 253.5 (18L/36R, 18R/36L)	GND CON 126.4 (E) 121.8 (W)
-------------------------	---------------------------------------	--	---



ELEV 96	D	TDZE 94
---------	----------	---------



GP 3.00° TCH 55	500	4000	CAMBE
HOLOP	NAVAL	ONNER	HAMMY
3000	3000	2200	TUFFE
3.1 NM	3.2 NM	3.2 NM	2.5 NM
5.3 NM	1.2 NM	1.2 NM to RWY 18R	
CATEGORY	A	B	C
LPV DA	294/18		200 (200-½)
LNAV/VNAV DA	390/24		296 (300-½)
LNAV MDA	540/24	446 (500-½)	540/45 446 (500-¾)
CIRCLING	740-1	644 (700-1)	740-1¾ 644 (700-1¾) 740-2 644 (700-2)

SE-3, 11 JUN 2026 to 09 JUL 2026

SE-3, 11 JUN 2026 to 09 JUL 2026