

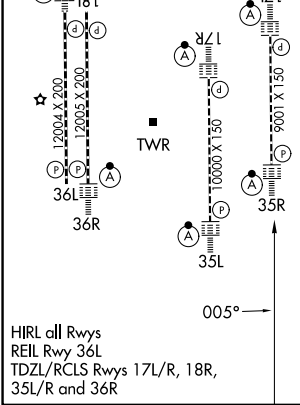
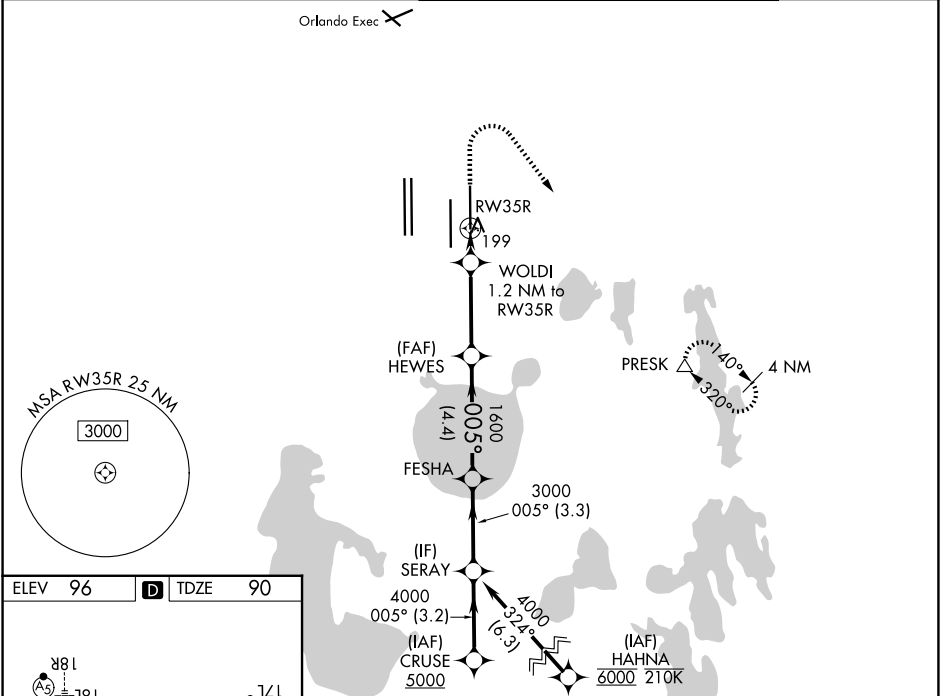
WAAS CH <b>86314</b> <b>W35A</b>	APP CRS <b>005°</b>	Rwy Ldg <b>9001</b> TDZE <b>90</b> Apt Elev <b>96</b>
--	------------------------	---

# RNAV (GPS) Y RWY 35R

ORLANDO INTL (MCO)

RNP APCH - GPS.	<p>▼ For uncompensated Baro-VNAV systems, LNAV/VNAV NA below 1°C or above 54°C. Use of FD or AP required during simultaneous operations. LNAV procedure NA during simultaneous operations. Simultaneous approach authorized. For inop ALS, increase LNAV/VNAV all Cats visibility to RVR 4500, and LNAV Cats C/D visibility to RVR 5500. Bright lights on highway midway between Rwy 35L and Rwy 35R may be mistaken for runway lights.</p>	<p>ALSF-2</p>	<p>MISSED APPROACH: Climb to 500 then climbing right turn to 3000 direct PRESK and hold, continue climb-in-hold to 3000.</p>
-----------------	---	---------------	--

D-ATIS <b>121.25</b>	ORLANDO APP CON <b>124.8 307.0</b>	ORLANDO TOWER <b>118.45 253.5</b> (17L/35R, 17R/35L) <b>124.3 253.5</b> (18L/36R, 18R/36L)	GND CON <b>126.4</b> (E) <b>121.8</b> (W)
-------------------------	---------------------------------------	--	---



SE-3, 11 JUN 2026 to 09 JUL 2026

SE-3, 11 JUN 2026 to 09 JUL 2026