

GULFPORT, MISSISSIPPI

# HI-TACAN Y RWY 14

VORTAC GPT <b>109.0</b> Chan <b>27</b>	APCH CRS <b>140°</b>	Rwy Idg TDZE Arpt Elev <b>9002</b> <b>27</b> <b>28</b>
--	-------------------------	---

[USAF]

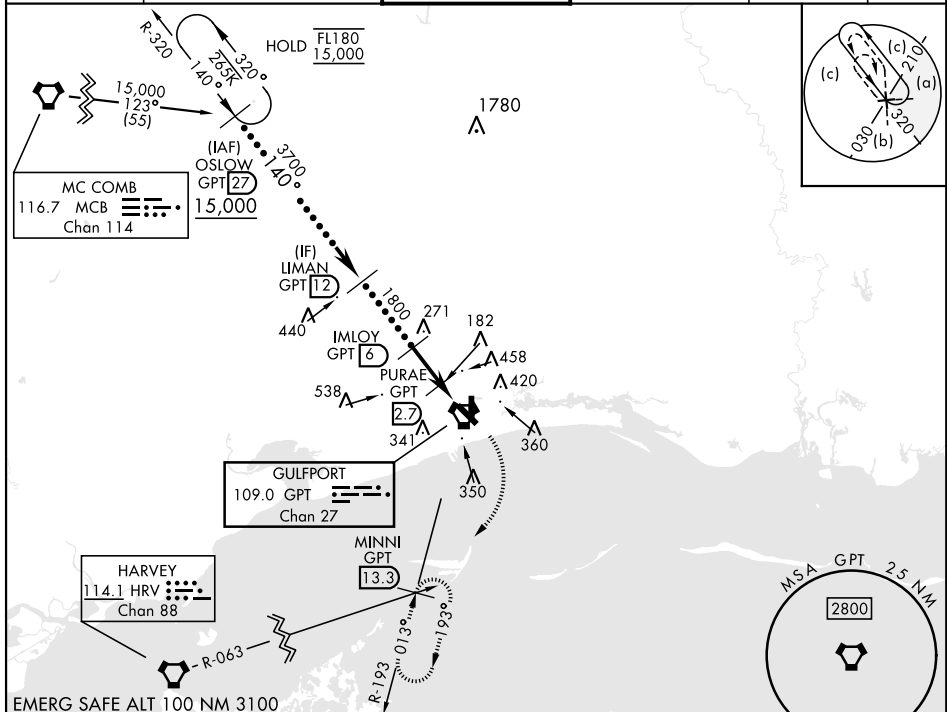
GULFPORT-BILOXI INTL (KGPT)

**▽** \* When ALS inop, increase RVR to 6000.  
**▲** \*\* When ALS inop, increase vis to 1 1/8 miles.



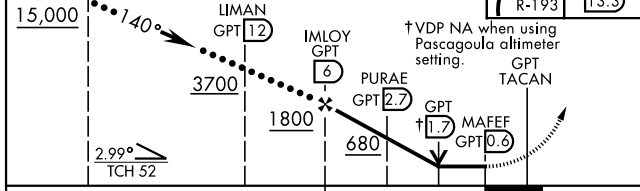
MISSED APPROACH: Climbing right turn to 3000 on GPT R-193 to MINNI/13.3 DME and hold.

ATIS ★ <b>119.45</b>	GULFPORT APP CON <b>124.6 354.1</b> 130°-309° <b>127.5 254.25</b> 310°-129°	GULFPORT TOWER ★ <b>123.7</b> CTAF <b>0 339.8</b>	GND CON <b>120.4 348.6</b>	UNICOM <b>122.95</b>	ASR
-------------------------	---	--	-------------------------------	-------------------------	-----



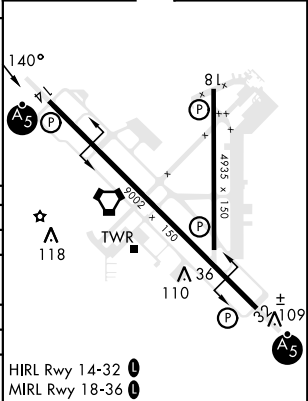
EMERG SAFE ALT 100 NM 3100

OSLOW GPT 27: 15,000  
 LIMAN GPT 12: 3700  
 IMLOY GPT 6: 1800  
 PURAE GPT 27: 680  
 MAFEF GPT 0.6: 11.7  
 TACAN GPT  
 MINNI GPT 13.3: 3000  
 R-193



ELEV	28	TDZE	27
------	----	------	----

CATEGORY	C	D	E
S-14 *	440/40	413	(500-3/4)
<b>C</b> CIRCLING	820-2 1/4 792 (800-2 1/4)	820-2 1/2 792 (800-2 1/2)	820-2 3/4 792 (800-2 3/4)
PASCAGOULA ALTIMETER MINIMUMS			
S-14 **	520/50	413	(500-1)
<b>C</b> CIRCLING	900-2 1/2 792 (800-2 1/2)	900-2 3/4 792 (800-2 3/4)	900-3 792 (800-3)



GULFPORT, MISSISSIPPI  
 Amdt 7A 16MAY24

30° 24' N-89° 04' W

GULFPORT-BILOXI INTL (KGPT)

# HI-TACAN Y RWY 14

SC-4, 11 JUN 2026 to 09 JUL 2026

SC-4, 11 JUN 2026 to 09 JUL 2026