

LOC I-GPT <b>110.9</b>	APP CRS <b>137°</b>	Rwy Ldg <b>9002</b> TDZE <b>27</b> Apt Elev <b>28</b>
---------------------------	------------------------	---

# ILS Z RWY 14 (SA CAT II)

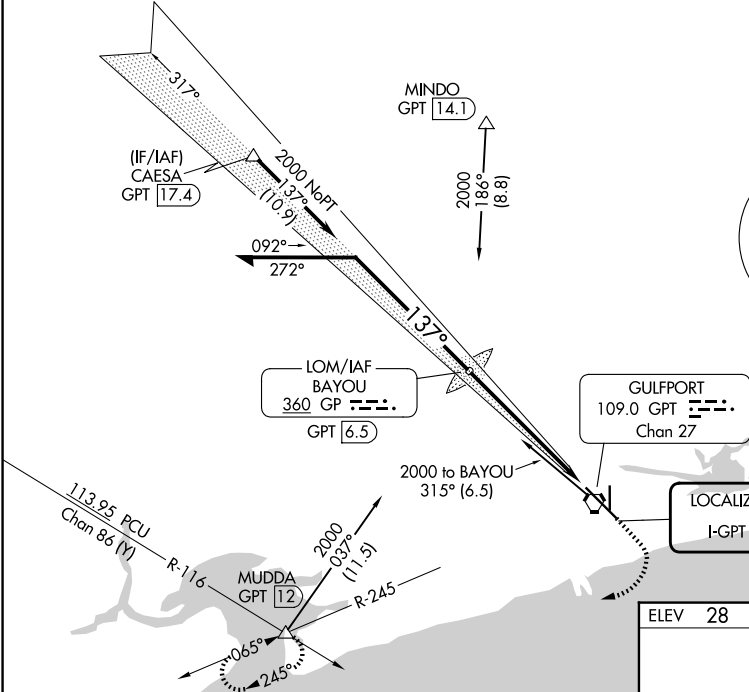
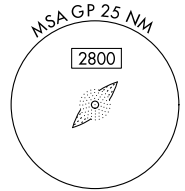
GULFPORT-BILOXI INTL (GPT)

<p>Reduced lighting: requires specific OPSPEC, MSPEC, or LOA approval and use of autoland or HUD to touchdown. Procedure NA when tower closed.</p>	<p>MALSRL</p>	<p>MISSED APPROACH: Climb to 500 then climbing right turn to 2000 on GPT VORTAC R-245 to MUDDA INT/12 DME and hold.</p>
	<p>ASR</p>	

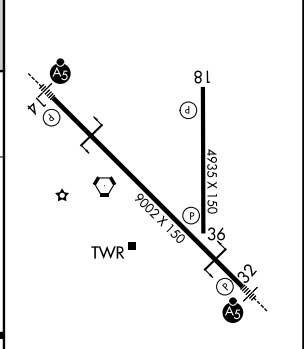
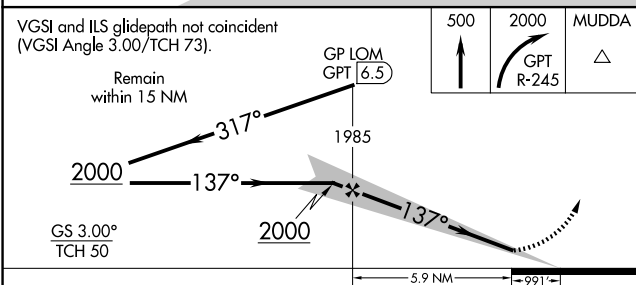
ATIS <b>119.45</b>	GULFPORT APP CON ★ <b>127.5 254.25</b>	GULFPORT TOWER ★ <b>123.7 (CTAF) 0 339.8</b>	GND CON <b>120.4 348.6</b>	UNICOM <b>122.95</b>
-----------------------	---	---	-------------------------------	-------------------------

Procedure NA for arrivals at CAESA on V552 westbound.

ALTERNATE MISSED APCH FIX



ELEV 28	TDZE 27
---------	---------



CATEGORY	A	B	C	D
S-ILS 14	CAT II RA 113/12 100 DA 127			

**SA CATEGORY II ILS - SPECIAL AIRCREW & AIRCRAFT CERTIFICATION REQUIRED**

HIRL Rwy 14-32  
MIRL Rwy 18-36

SC-4, 11 JUN 2026 to 09 JUL 2026

SC-4, 11 JUN 2026 to 09 JUL 2026