

LOC I-GPT 110.9	APP CRS 137°	Rwy Ldg 9002
		TDZE 27
		Apt Elev 28

ILS Z or LOC Z RWY 14

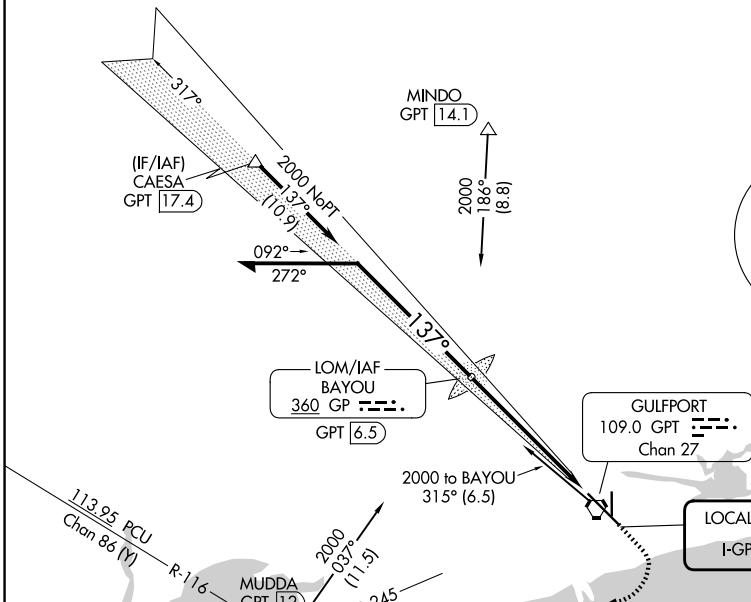
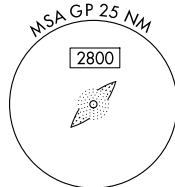
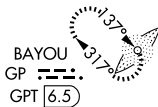
GULFPORT-BILOXI INTL (GPT)

<p>⚠ For inop ALS, increase S-ILS 14 Cat E visibility to RVR 4000 and S-LOC 14 Cat E visibility to 1½ SM.</p> <p>ASR **RVR 1800 authorized with use of FD or AP or HUD to DA.</p>	<p>MALS</p>	<p>MISSED APPROACH: Climb to 500 then climbing right turn to 2000 on GPT VORTAC R-245 to MUDDA INT/12 DME and hold.</p>
---	--------------------	--

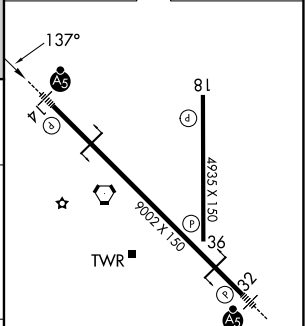
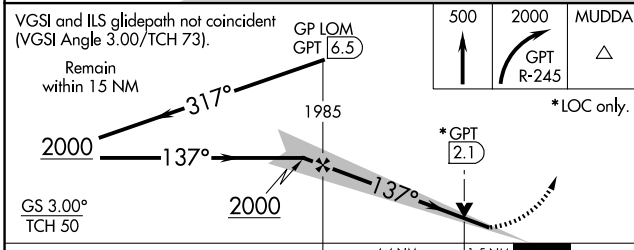
ATIS 119.45	GULFPORT APP CON ★ 127.5 254.25	GULFPORT TOWER ★ 123.7 (CTAF) 0 339.8	GND CON 120.4 348.6	UNICOM 122.95
-----------------------	---	---	-------------------------------	-------------------------

Procedure NA for arrivals at CAESA on V552 westbound.

ALTERNATE MISSED APCH FIX



ELEV 28	TDZE 27
---------	---------



CATEGORY	A	B	C	D	E	
S-ILS 14**	227/24 200 (200-½)					
S-LOC 14	560/24	533 (600-½)	560/55 533 (600-1)			
CIRCLING	560-1 532 (600-1)	640-1 612 (700-1)	820-2¼ 792 (800-2¼)	820-2½ 792 (800-2½)	820-2¾ 792 (800-2¾)	
	HIRL Rwy 14-32 Ⓛ					
	MIRL Rwy 18-36 Ⓛ					
	FAF to MAP 5.9 NM					
	Knots	60	90	120	150	180
	Min:Sec	5:54	3:56	2:57	2:22	1:58

SC-4, 11 JUN 2026 to 09 JUL 2026

SC-4, 11 JUN 2026 to 09 JUL 2026