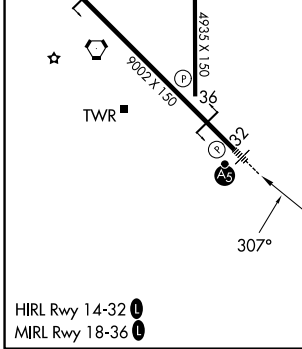
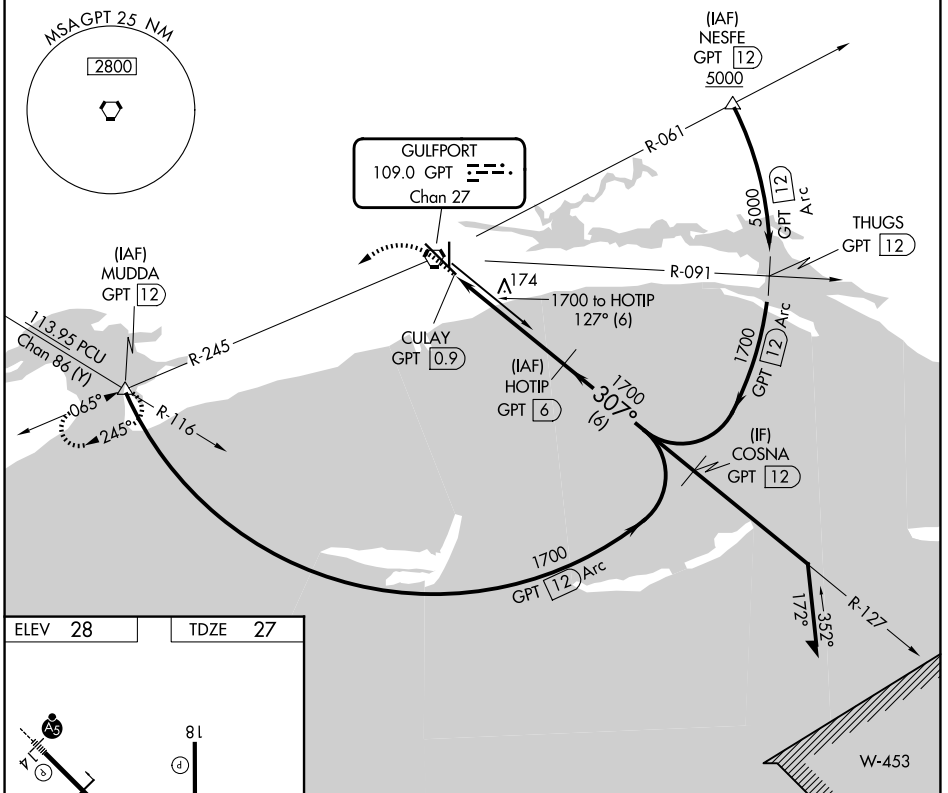


VORTAC GPT 109.0 Chan 27	APP CRS 307°	Rwy Ldg TDZE Apt Elev	9002 27 28
---------------------------------------	------------------------	-----------------------------	---------------------------------------

VOR Z RWY 32

GULFPORT-BILOXI INTL (GPT)

DME required.		MALSR 	MISSED APPROACH: Climb to 700 then climbing left turn to 2000 on GPT VORTAC R-245 to MUDDA INT/12 DME and hold.	
ATIS 119.45	GULFPORT APP CON * 127.5 254.25	GULFPORT TOWER * 123.7 (CTAF) 339.8	GND CON 120.4 348.6	UNICOM 122.95



ELEV 28	TDZE 27	<table border="1"> <tr> <td>700</td> <td>2000</td> <td>GPT R-245</td> <td>MUDDA</td> <td>HOTIP GPT 6</td> <td rowspan="2">Remain within 15 NM</td> </tr> <tr> <td colspan="5"> </td> </tr> </table>			700	2000	GPT R-245	MUDDA	HOTIP GPT 6	Remain within 15 NM					
700	2000	GPT R-245	MUDDA	HOTIP GPT 6	Remain within 15 NM										
<p>VGSI and descent angles not coincident (VGSI Angle 3.00/TCH 47)</p> <p>3.04° TCH 47</p> <p>1.1 4 NM</p>															
CATEGORY	A	B	C	D	E										
S-32	440/40 413 (500-3/4)														
CIRCLING	520-1 492 (500-1)	640-1 612 (700-1)	760-2 732 (800-2)	760-2 1/2 732 (800-2 1/4)	760-2 1/2 732 (800-2 1/2)										

SC-4, 11 JUN 2026 to 09 JUL 2026

SC-4, 11 JUN 2026 to 09 JUL 2026