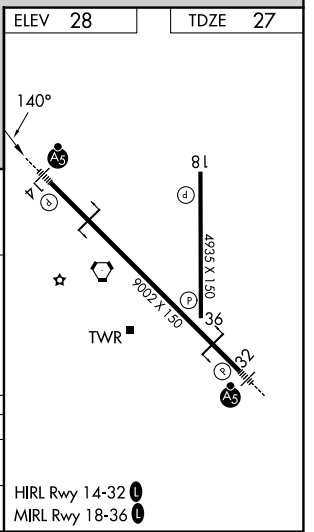
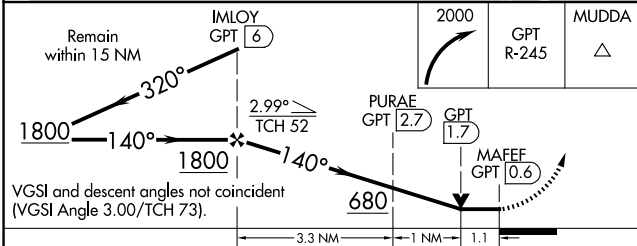
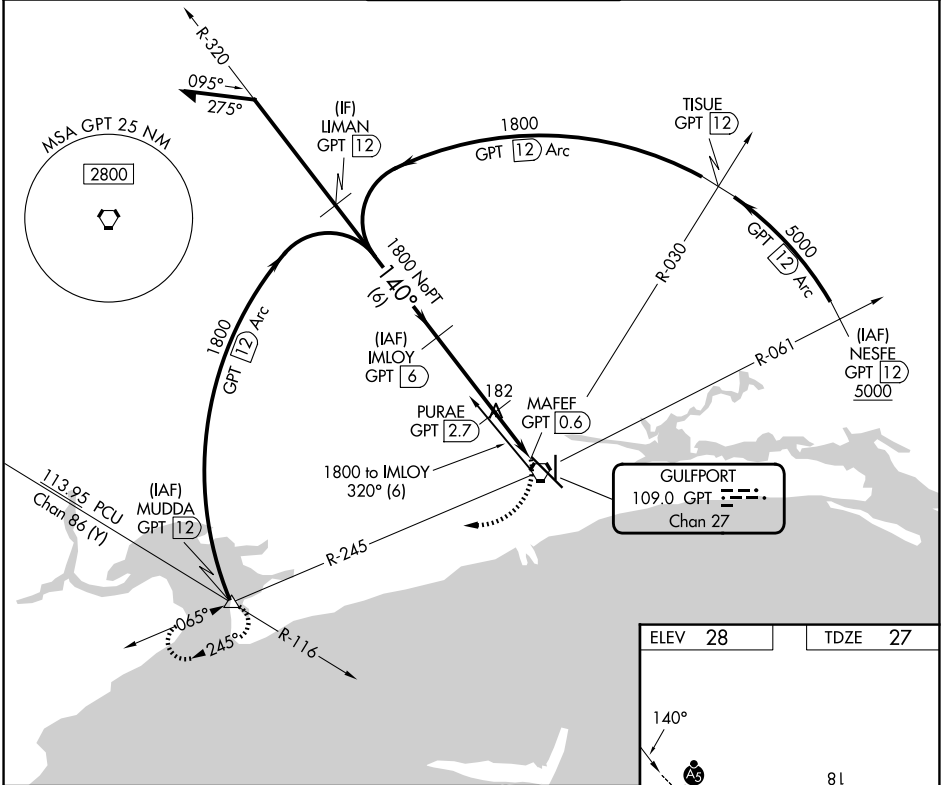


VORTAC GPT <b>109.0</b> Chan <b>27</b>	APP CRS <b>140°</b>	Rwy Ldg TDZE Apt Elev	<b>9002</b> <b>27</b> <b>28</b>
--	------------------------	-----------------------------	---------------------------------------

# VOR Z or TACAN Z RWY 14

GULFPORT-BILOXI INTL (GPT)

DME required.		MALSR		MISSED APPROACH: Climbing right turn to 2000 on GPT VORTAC R-245 to MUDDA INT/12 DME and hold.	
<p>For inop ALS, increase S-14 Cat C/D/E visibility to RVR 6000.</p>					
ATIS <b>119.45</b>	GULFPORT APP CON * <b>127.5 254.25</b>	GULFPORT TOWER * <b>123.7 (CTAF) 0 339.8</b>	GND CON <b>120.4 348.6</b>	UNICOM <b>122.95</b>	



CATEGORY	A	B	C	D	E
S-14	440/24	413 (500-1/2)	440/40 413 (500-3/4)		
CIRCLING	520-1 492 (500-1)	640-1 612 (700-1)	820-2 1/4 792 (800-2 1/4)	820-2 1/2 792 (800-2 1/2)	820-2 3/4 792 (800-2 3/4)

HIRL Rwy 14-32   
MIRL Rwy 18-36

SC-4, 11 JUN 2026 to 09 JUL 2026

SC-4, 11 JUN 2026 to 09 JUL 2026