

LOC/DME I-SZI <b>111.7</b> Chan <b>54</b>	APP CRS <b>164°</b>	Rwy Ldg <b>9426</b> TDZE <b>430</b> Apt Elev <b>432</b>
---	------------------------	---

# ILS RWY 16C (SA CAT I)

## SEATTLE-TACOMA INTL (SEA)

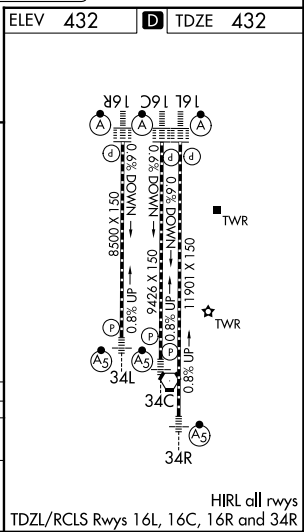
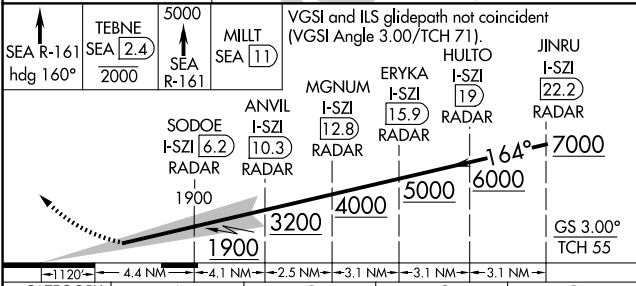
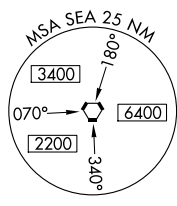
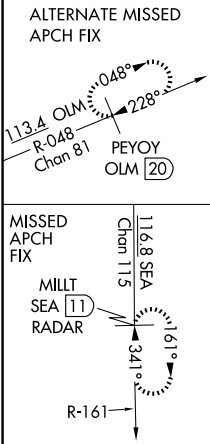
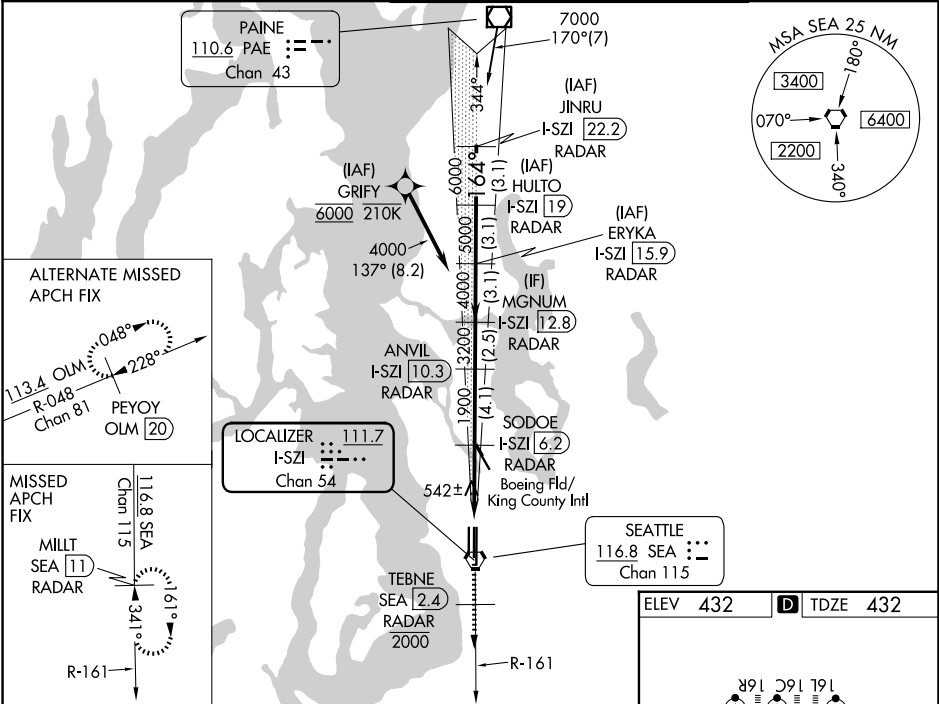
DME or RADAR required. From GRIFY: RNAV 1-GPS required.

Simultaneous approach authorized with Rwy 16R. Simultaneous operations require use of vertical guidance, maintain last assigned altitude until established on glideslope. Requires specific OPSPEC, MSPEC or LOA approval and use of HUD to DH.

ALSF-2

MISSED APPROACH: Climb on heading 160° and SEA VORTAC R-161 to cross TEBNE/SEA 2.4 DME/RADAR at or below 2000, then climb to 5000 on SEA VORTAC R-161 to MILLT/SEA 11 DME/RADAR and hold, continue climb-in-hold to 5000.

D-ATIS <b>118.0</b>	SEATTLE APP CON <b>133.65 273.45</b>	SEATTLE TOWER <b>119.9 239.3</b> (16L, 16C, 34C, 34R) <b>120.95 239.3</b> (16R, 34L)	GND CON <b>121.7</b>
------------------------	---	--	-------------------------



SEATTLE, WASHINGTON	RA 292/14 150 DA 580
<b>SA CATEGORY I ILS - SPECIAL AIRCREW &amp; AIRCRAFT CERTIFICATION REQUIRED</b>	

NW-1, 11 JUN 2026 to 09 JUL 2026

NW-1, 11 JUN 2026 to 09 JUL 2026