

LOC/DME I-BEJ 110.75 Chan 44(Y)	APP CRS 344°	Rwy Ldg TDZE 8500 379 Apt Elev 433
--	------------------------	---

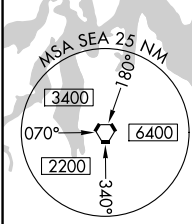
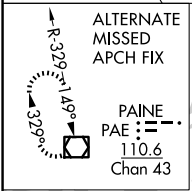
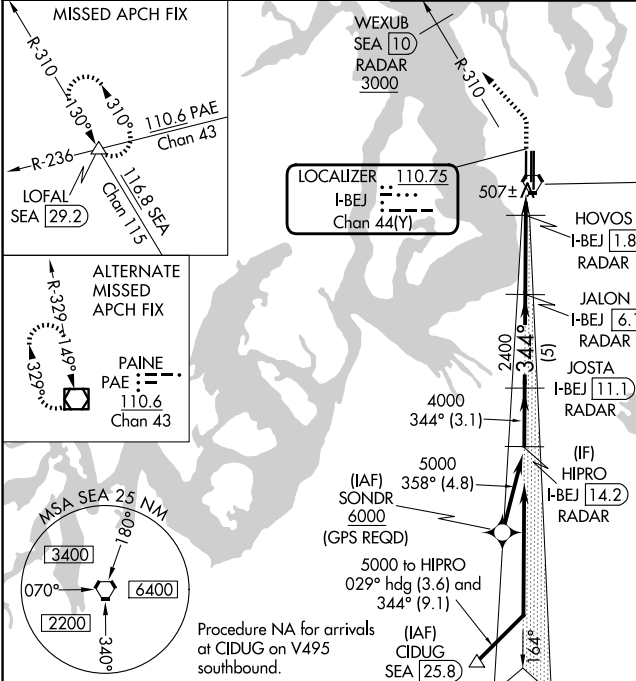
ILS or LOC RWY 34L

SEATTLE-TACOMA INTL (SEA)

▼ DME or RADAR required.
Simultaneous approach authorized with Rwy 34R/C.
RVR 1800 authorized with use of FD or AP or HUD to DA.

MALS R MISSED APPROACH: Climb to 900 then climbing left turn on heading 300° and on SEA VORTAC R-310 to cross WEXUB/10 DME/RADAR at or above 3000, then climb to 5000 on SEA VORTAC R-310 to LOFAL/SEA 29.2 DME and hold.

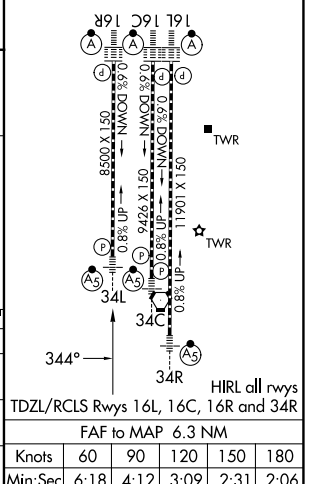
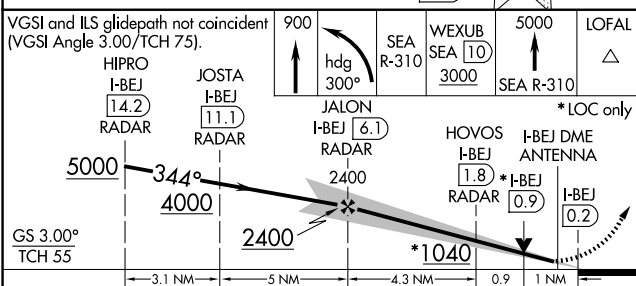
D-ATIS 118.0	SEATTLE APP CON 133.65 273.45	SEATTLE TOWER 119.9 239.3 (16L, 16C, 34C, 34R) 120.95 239.3 (16R, 34L)	GND CON 121.7
------------------------	---	--	-------------------------



Procedure NA for arrivals at CIDUG on V495 southbound.

DME or RADAR REQUIRED

ELEV 433	D TDZE 379
----------	-------------------



CATEGORY	A	B	C	D
S-ILS 34L#	579/24 200 (200-½)			
S-LOC 34L	760/24	381 (400-½)	760/40	381 (400-¾)
CIRCLING	1000-1	567 (600-1)	1000-1½	1000-2
			567 (600-1½)	567 (600-2)

NW-1, 11 JUN 2026 to 09 JUL 2026

NW-1, 11 JUN 2026 to 09 JUL 2026