

APP CRS <b>164°</b>	Rwy Ldg TDZE Apt Elev	<b>8500</b> <b>415</b> <b>433</b>
------------------------	-----------------------------	---

# RNAV (RNP) Z RWY 16R

SEATTLE-TACOMA INTL (SEA)

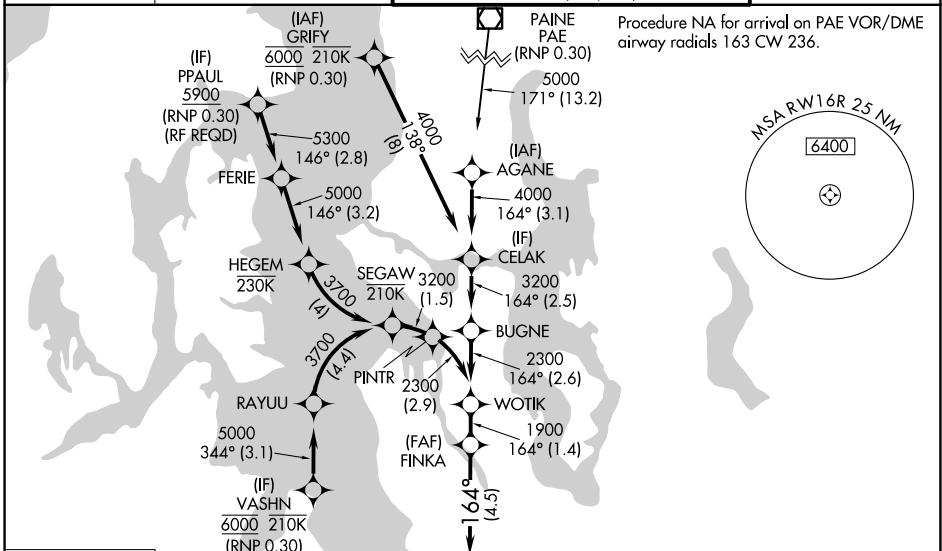
**▼** For uncompensated Baro-VNAV systems, procedure NA below -6°C (22°F) or above 54°C (130°F). Simultaneous approach authorized with Rwy 16L, except for arrivals at PPAUL and VASHN. GPS required. Use of FD or AP providing RNAV track guidance required during simultaneous operations. For inop ALS, increase RNP 0.15 all Cats visibility to RVR 5800, increase RNP 0.30 all Cats visibility to 1/2 SM.

ALS-F-2

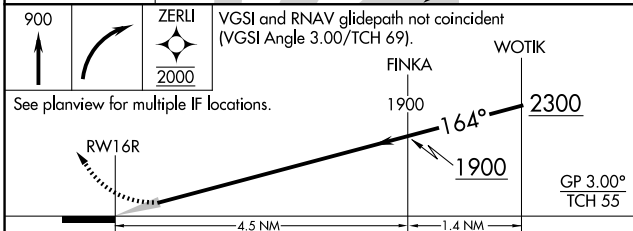
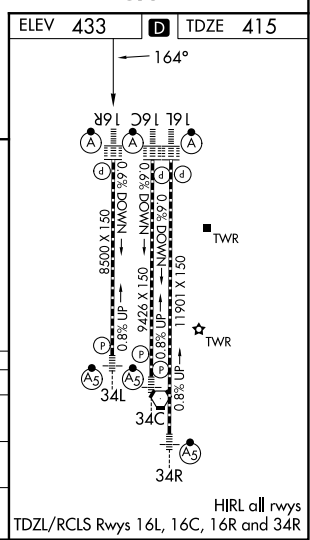


MISSED APPROACH: Climb to 900 then climbing right direct ZERLI to cross ZERLI at 2000 and hold.

D-ATIS <b>118.0</b>	SEATTLE APP CON <b>133.65 273.45</b>	SEATTLE TOWER <b>119.9 239.3</b> (16L, 16C, 34C, 34R) <b>120.95 239.3</b> (16R, 34L)	GND CON <b>121.7</b>
------------------------	---	--	-------------------------



## RADAR REQUIRED



CATEGORY	A	B	C	D
RNP 0.15 DA		770/34	355 (400-5%)	
RNP 0.30 DA		854/50	439 (500-1)	

## AUTHORIZATION REQUIRED

NW-1, 11 JUN 2026 to 09 JUL 2026