

# RNAV (RNP) Z RWY 34R


SEATTLE-TACOMA INTL (SEA)

APP CRS <b>344°</b>	Rwy Ldg <b>11901</b>
	TDZE <b>372</b>
	Apt Elev <b>432</b>

RNP AR APCH.

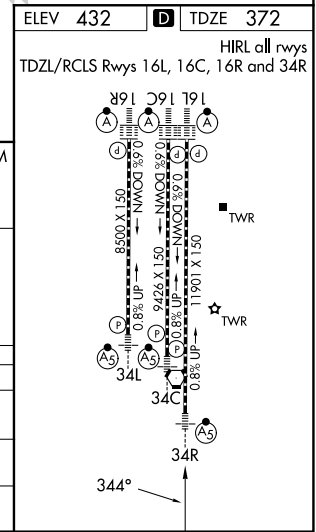
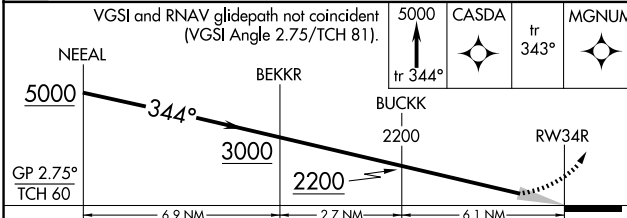
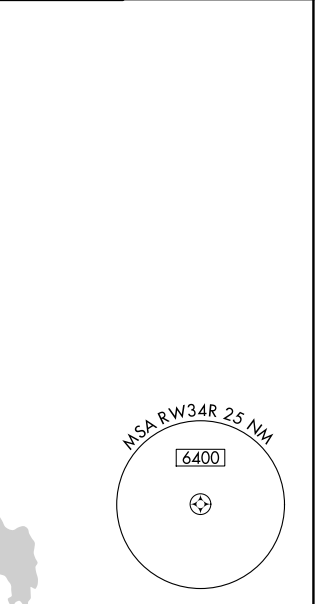
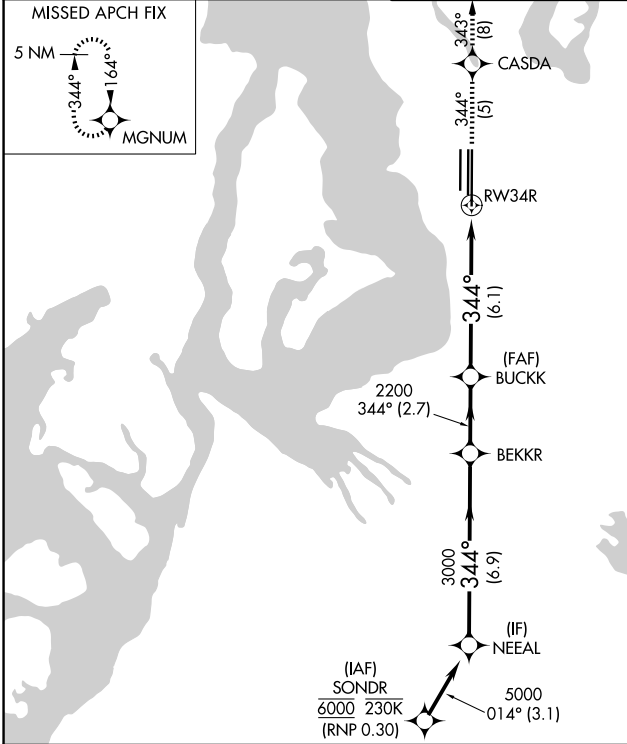
Simultaneous approach authorized. For uncompensated Baro-VNAV systems, procedure NA below -6°C or above 54°C. Use of FD or AP required during simultaneous operations. For inop ALS, increase RNP 0.28 all Cats visibility to 1½ SM. Inop table does not apply to RNP 0.30.

MALSRL



MISSED APPROACH: Climb to 5000 on track 344° to CASDA and on track 343° to MGNUM and hold, continue climb-in-hold to 5000.

D-ATIS <b>118.0</b>	SEATTLE APP CON <b>133.65 273.45</b>	SEATTLE TOWER <b>119.9 239.3</b> (16L, 16C, 34C, 34R) <b>120.95 239.3</b> (16R, 34L)	GND CON <b>121.7</b>
------------------------	---	--	-------------------------



CATEGORY	A	B	C	D
RNP 0.28 DA		867/50	495 (500-1)	
RNP 0.30 DA		880-1½	508 (500-1½)	

## AUTHORIZATION REQUIRED