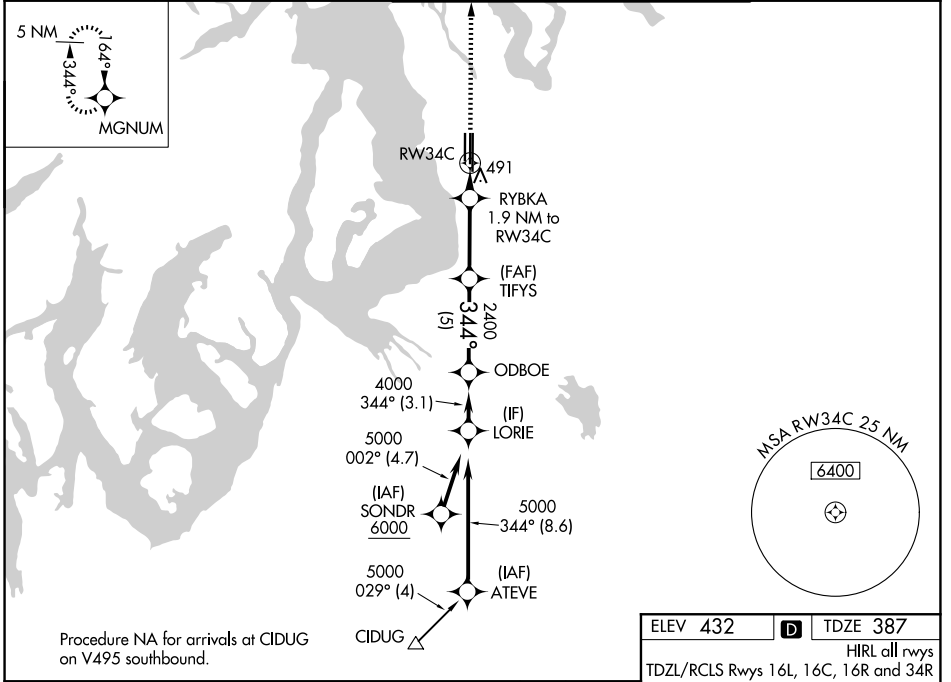


WAAS CH <b>77710</b> <b>W34B</b>	APP CRS <b>344°</b>	Rwy Ldg TDZE <b>387</b> Apt Elev <b>432</b>
--	------------------------	---

# RNAV (GPS) Y RWY 34C

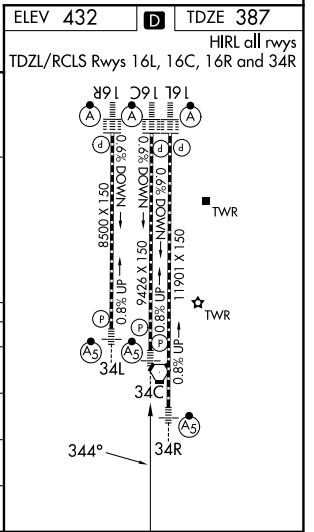
SEATTLE-TACOMA INTL (SEA)

<b>RNP APCH.</b> Simultaneous approach authorized with Rwy 34L. LNAV procedure NA during simultaneous operations. Use of FD or AP providing RNAV track guidance required during simultaneous operations. For uncompensated Baro-VNAV systems, LNAV/VNAV NA below -6°C (22°F) or above 54°C (130°F).		<b>MALSR</b> 	<b>MISSED APPROACH:</b> Climb to 5000 direct MGNUM and hold, continue climb-in-hold to 5000.
<b>D-ATIS</b> <b>118.0</b>	<b>SEATTLE APP CON</b> <b>133.65 273.45</b>	<b>SEATTLE TOWER</b> <b>119.9 239.3</b> (16L, 16C, 34C, 34R) <b>120.95 239.3</b> (16R, 34L)	<b>GND CON</b> <b>121.7</b>



VGSI and RNAV glidepath not coincident (VGSI Angle 3.00/TCH 73).

	LORIE	ODBOE	TIFYS	RYBKA 1.9 NM to RWY34C	RWY34C
	5000	4000	2400	2400	5000
	GP 3.00° TCH 56	344°	344°	344°	344°
	3.1 NM	5 NM	4.3 NM	0.7 NM	1.2 NM
CATEGORY	A	B	C	D	
LPV DA		610/24	223 (200-½)		
LNAV/VNAV DA		839/50	452 (500-1)		
LNAV MDA	880/24	493 (500-½)	880/55	493 (500-1)	
CIRCLING	1000-1	568 (600-1)	1000-1½ 568 (600-1½)	1000-2 568 (600-2)	



NW-1, 11 JUN 2026 to 09 JUL 2026

NW-1, 11 JUN 2026 to 09 JUL 2026