


WAAS CH <b>45810</b> <b>W34A</b>	APP CRS <b>344°</b>	Rwy Ldg TDZE <b>379</b> Apt Elev <b>433</b>
--	------------------------	---

# RNAV (GPS) Y RWY 34L

SEATTLE-TACOMA INTL (SEA)

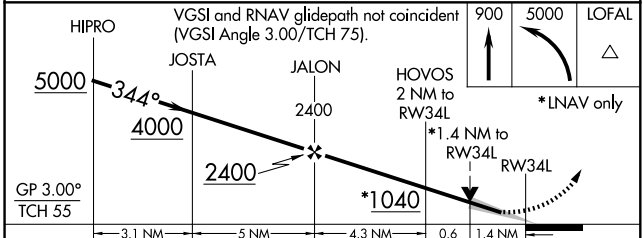
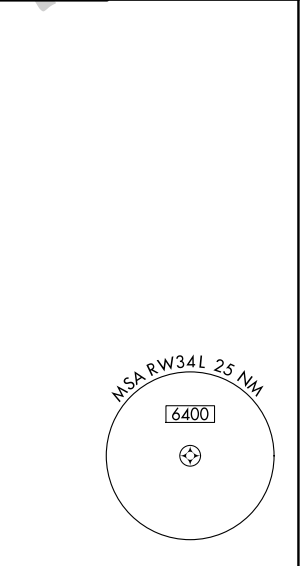
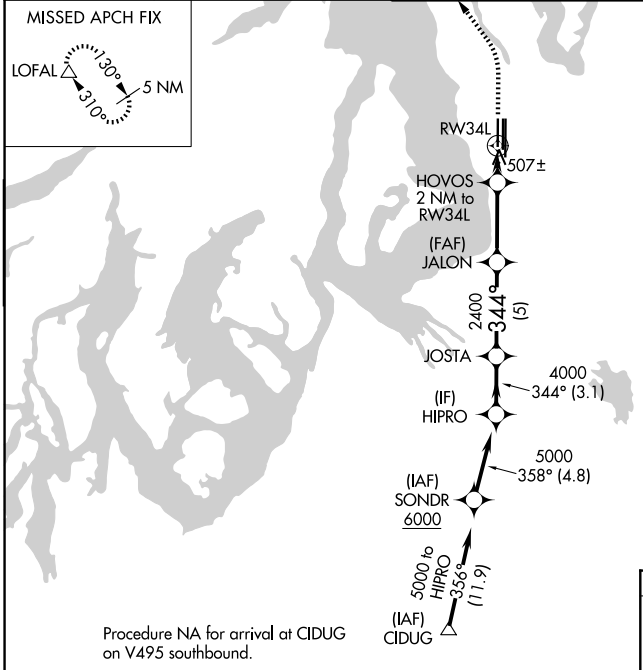
**⚠** DME/DME RNP -0.3 NA. For uncompensated Baro-VNAV systems, LNAV/VNAV NA below -6°C (22°F) or above 54°C (130°F). Use of FD or AP providing RNAV track guidance required during simultaneous operations. LNAV procedure NA during simultaneous operations. Simultaneous approach authorized with Rwy 34R/C. For inoperative ALS, increase LNAV/VNAV all Cats visibility to 1 3/8 SM, increase LNAV Cat A and B visibility to RVR 5500 and Cat C and D visibility to 1 3/8 SM. # RVR 1800 authorized with use of FD or AP or HUD to DA.

**MALS**

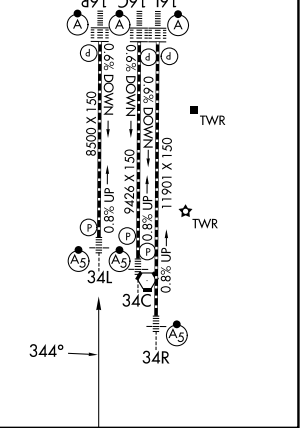


**MISSED APPROACH:** Climb to 900 then climbing left turn to 5000 direct LOFAL and hold.

D-ATIS <b>118.0</b>	SEATTLE APP CON <b>133.65 273.45</b>	SEATTLE TOWER <b>119.9 239.3</b> (16L, 16C, 34C, 34R) <b>120.95 239.3</b> (16R, 34L)	GND CON <b>121.7</b>
------------------------	---	--	-------------------------



ELEV 433	<b>D</b> TDZE 379
HIRL all rwys	
TDZL/RCLS Rwy 16L, 16C, 16R and 34R	



CATEGORY	A	B	C	D
LPV DA#	579/24		200 (200-1/2)	
LNAV/VNAV DA	808/40		429 (400-3/4)	
LNAV MDA	860/24 481 (500-1/2)		860/55 481 (500-1)	
CIRCLING	1000-1 567 (600-1)		1000-2 567 (600-2)	

NW-1, 11 JUN 2026 to 09 JUL 2026

NW-1, 11 JUN 2026 to 09 JUL 2026