

LOC I-ILN 110.7	APP CRS 224°	Rwy Ldg 10701
		TDZE 1077
		Apt Elev 1077

ILS or LOC RWY 22R

WILMINGTON AIR PARK (ILN)

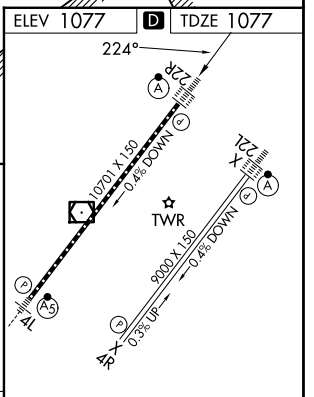
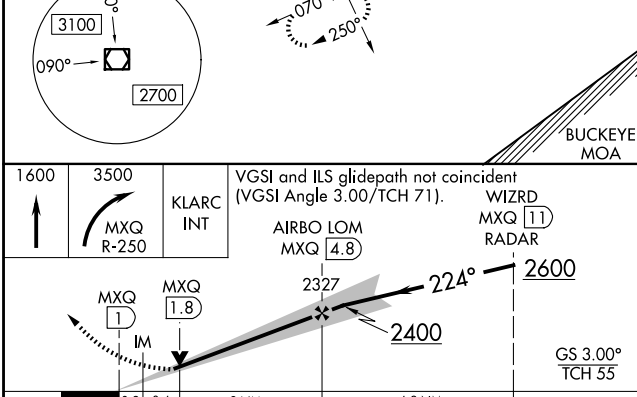
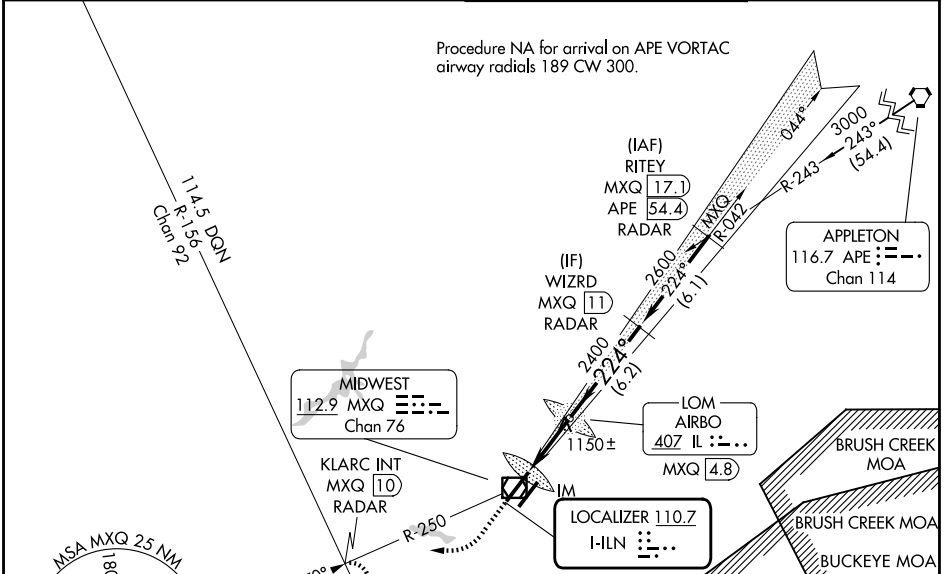
DME or RADAR required for procedure entry.
ADF or DME required for LOC only.

Simultaneous approach authorized. DME from MXQ VOR/DME.
DME use requires simultaneous reception of I-ILN and MXQ DME.

ALSF-2

MISSED APPROACH: Climb to 1600 then climbing right turn to 3500 on MXQ VOR/DME to KLARC INT/MXQ to DME/RADAR and hold, continue climb-in-hold to 3500.

D-ATIS 124.925	COLUMBUS APP CON 118.85 269.275	WILMINGTON TOWER 119.475	GND CON 121.6
--------------------------	---	------------------------------------	-------------------------



CATEGORY	A	B	C	D
S-ILS 22R	1277/18 200 (200-½)			
S-LOC 22R	1400/24	323 (400-½)	1400/26	323 (400-½)
CIRCLING	1560-1	483 (500-1)	1860-2¼ 783 (800-2¼)	1860-2½ 783 (800-2½)

TDZ/CL Rwys 22L and 22R
HIRL Rwys 4L-22R and 4R-22L

FAF to MAP 3.8 NM

Knots	60	90	120	150	180
Min:Sec	3:48	2:32	1:54	1:31	1:16

EC-2, 11 JUN 2026 to 09 JUL 2026

EC-2, 11 JUN 2026 to 09 JUL 2026