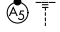


WAAS CH <b>62914</b> <b>W04A</b>	APP CRS <b>044°</b>	Rwy Ldg <b>10701</b> TDZE <b>1057</b> Apt Elev <b>1077</b>
--	------------------------	--

# RNAV (GPS) RWY 4L

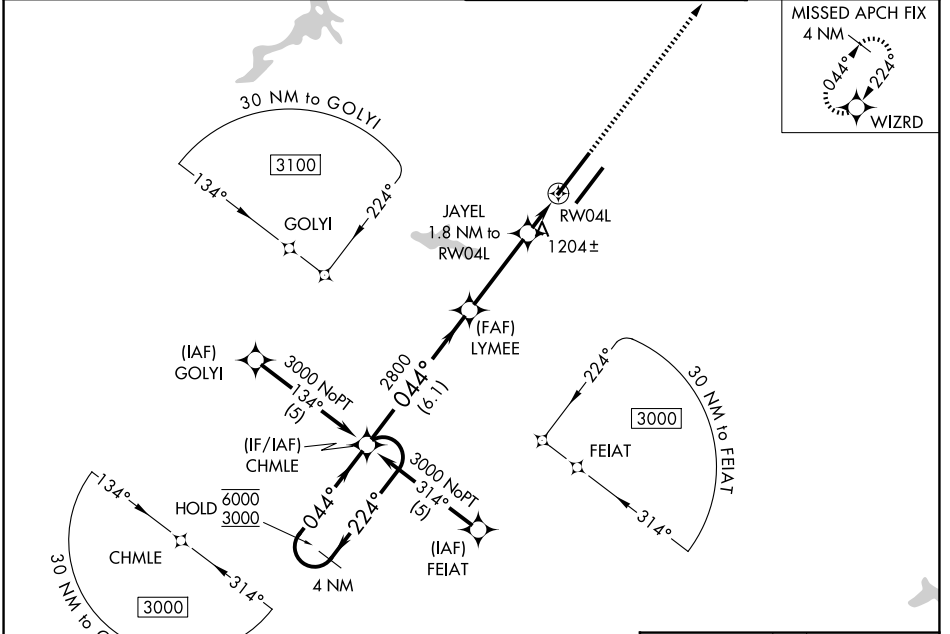
WILMINGTON AIR PARK (ILN)

RNP APCH - GPS.

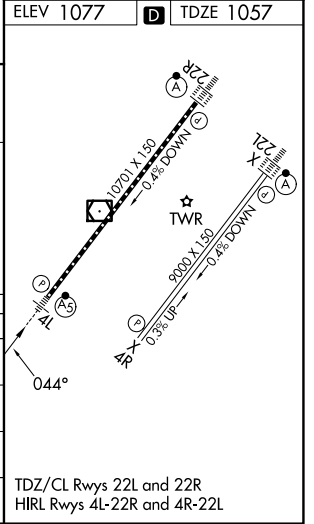
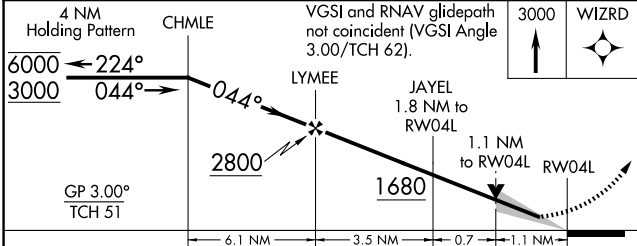
**MALSR**  
 MISSED APPROACH: Climb to 3000 direct WIZRD and hold.

**⚠** For uncompensated Baro-VNAV systems, LNAV/VNAV NA below -17°C or above 54°C.  
**⚠** For inop ALS, increase LNAV Cats A/B visibility to RVR 5500 and LNAV Cats C/D visibility to RVR 6000. \*1800 RVR authorized with use of FD or AP or HUD to DA.

D-ATIS <b>124.925</b>	COLUMBUS APP CON <b>118.85 269.275</b>	WILMINGTON TOWER <b>119.475</b>	GND CON <b>121.6</b>
--------------------------	---	------------------------------------	-------------------------



ELEV 1077	<b>D</b> TDZE 1057
-----------	--------------------



CATEGORY	A	B	C	D
LPV DA *	1257/24		200 (200-½)	
LNAV/VNAV DA	1505/45		448 (500-¾)	
LNAV MDA	1460/24	403 (400-½)	1460/40	403 (400-¾)
CIRCLING	1560-1	483 (500-1)	1860-2¼ 783 (800-2¼)	1860-2½ 783 (800-2½)

TDZ/CL Rwy 22L and 22R  
 HIRL Rwy 4L-22R and 4R-22L

EC-2, 11 JUN 2026 to 09 JUL 2026

EC-2, 11 JUN 2026 to 09 JUL 2026