

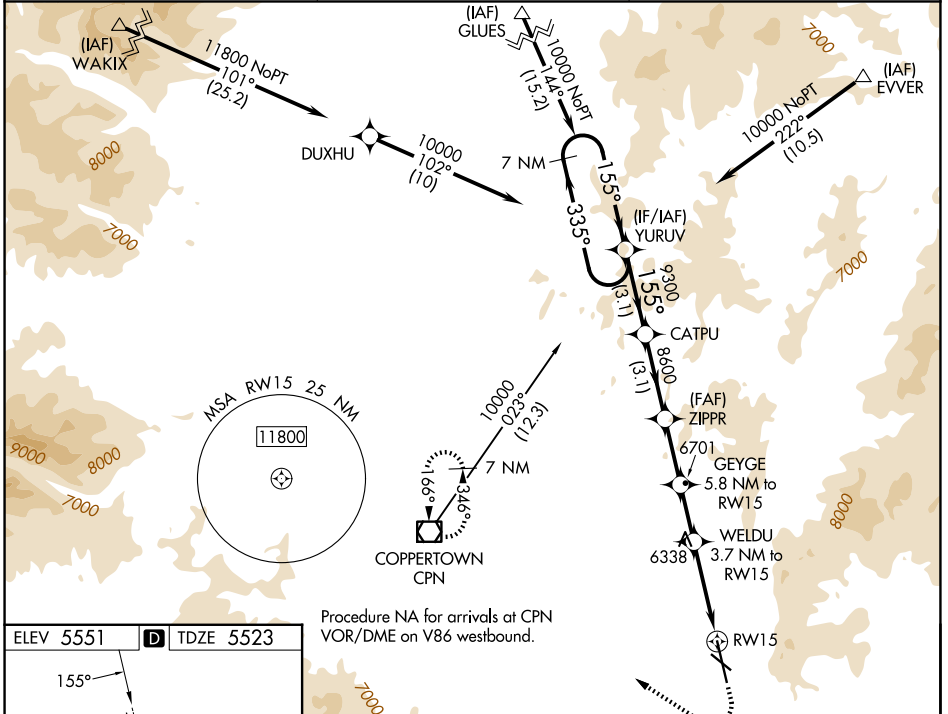
WAAS CH 56341 W15A	APP CRS 155°	Rwy Ldg TDZE Apt Elev	9000 5523 5551
--	------------------------	-----------------------------	---

RNAV (GPS) RWY 15

BERT MOONEY (BTM)

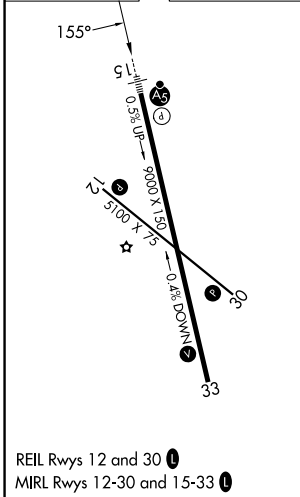
RNP APCH - GPS.	MALS/R	MISSED APPROACH: (Do not exceed 190K until 7100) Climb to 7100 then climbing right turn to 11000 direct CPN VOR/DME and hold, continue climb-in-hold to 11000. *Missed approach requires minimum climb of 365 feet per NM to 8700.
<p>⚠ Circling NA northeast of Rwy 15-33. For inop ALS, increase LPV all Cats visibility to 2 1/2 SM, increase LPV * Cat C/D visibility to 7/8 SM. Inop table does not apply to LNAV Cats C/D.</p> <p>⚠ -24°C</p>		

ASOS 135.175	SALT LAKE CENTER 132.4 338.3	UNICOM 123.0(CTAF) 0
------------------------	--	--------------------------------



Procedure NA for arrivals at CPN VOR/DME on V86 westbound.

ELEV 5551	D	TDZE 5523
-----------	----------	-----------



	7 NM Holding Pattern	YURUV	CATPU	ZIPPR	GEYGE	WELDU	CPN
	10000	335°	155°	9300	8600	7700	6920
	GP 3.50° TCH 55				5.8 NM to RW15	3.7 NM to RW15	
		3.1 NM	3.1 NM	2.4 NM	2.1 NM	3.7 NM	
CATEGORY	A	B	C	D			
LPV DA	6281-1/8 758 (800-1/8)						
LPV DA*	5825-1/2 302 (300-1/2)						
LNAV MDA	6780-3/4 1257 (1300-3/4)	6780-1 1257 (1300-1)	6780-3 1257 (1300-3)				
CIRCLING	6780-1/4 1229 (1300-1/4)	7060-3 1509 (1600-3)		7120-3 1569 (1600-3)			

NW-1, 11 JUN 2026 to 09 JUL 2026

NW-1, 11 JUN 2026 to 09 JUL 2026