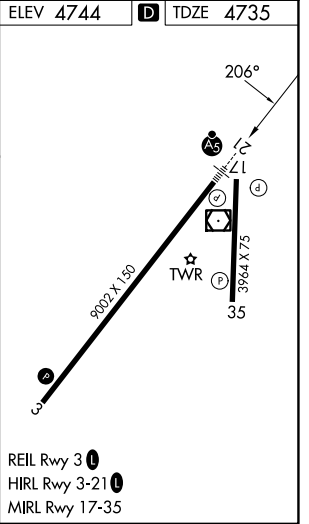
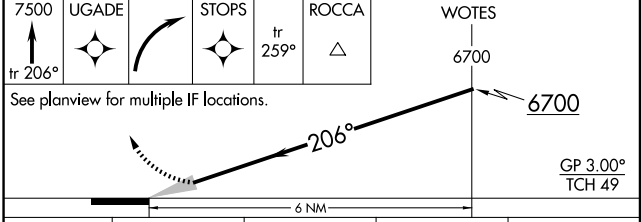
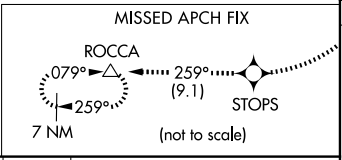
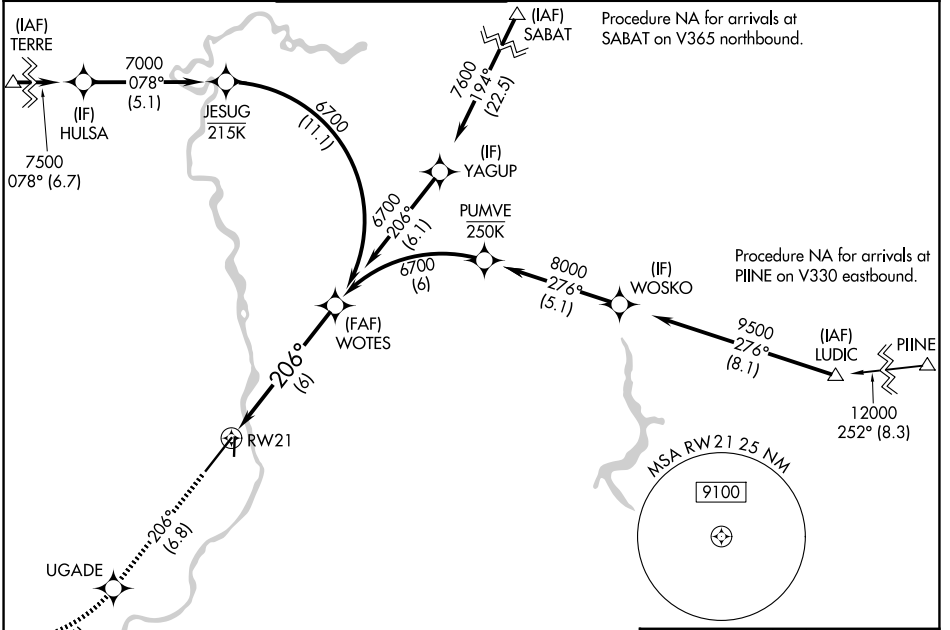


RNAV (RNP) Z RWY 21

IDAHO FALLS RGNL (IDA)

| | | |
|------------------------|-----------------------------|---|
| APP CRS 206° | Rwy Ldg TDZE Apt Elev | 9002 4735 4744 |
|------------------------|-----------------------------|---|

| | | | | | | |
|---|----------------------|-----------------------------|--|----------|---------|--------|
| RNP AR APCH-GPS. | | MALSR | MISSED APPROACH: Climb to 7500 on track 206° to UGADE, right turn to STOPS, and on track 259° to ROCCA and hold. | | | |
| <p>⚠ For uncompensated Baro-VNAV systems, procedure NA below -27°C or above 54°C. For inop ALS, increase RNP 0.11 visibility all Cats to RVR 4500.</p> | | | GND CON | CLNC DEL | GCO | UNICOM |
| ATIS | SALT LAKE CENTER | IDAHO FALLS TOWER * | 121.7 | 121.7 | 121.725 | 122.95 |
| 135,325 | 128.35 239.25 | 118.5 (CTAF) 0 257.8 | | | | |



| CATEGORY | A | B | C | D |
|-------------|---|---------|-------------|---|
| RNP 0.11 DA | | 5011/24 | 276 (300-½) | |
| RNP 0.30 DA | | 5120/35 | 385 (400-¾) | |

AUTHORIZATION REQUIRED

REIL Rwy 3 **1**
 HIRL Rwy 3-21 **1**
 MIRL Rwy 17-35

NW-1, 11 JUN 2026 to 09 JUL 2026

NW-1, 11 JUN 2026 to 09 JUL 2026