

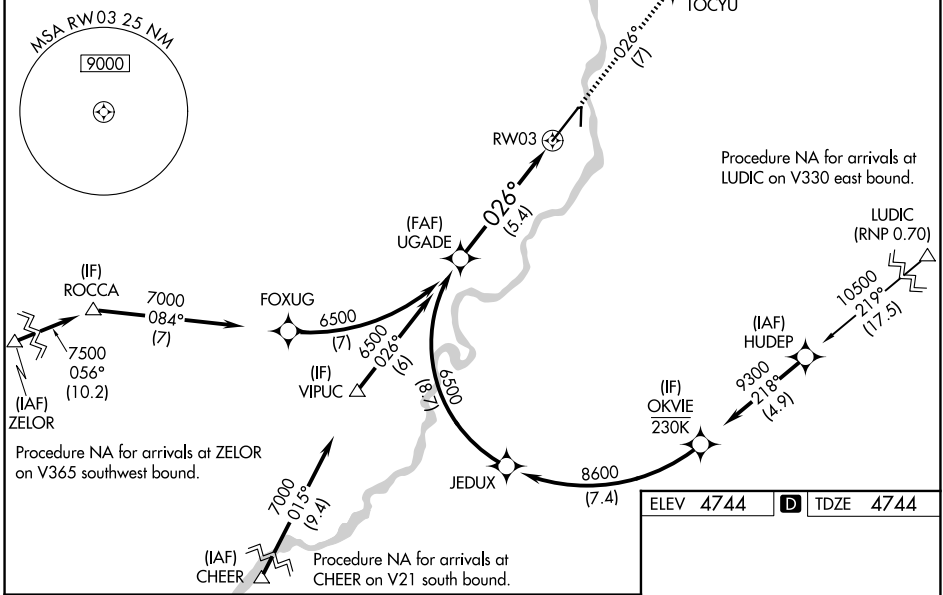
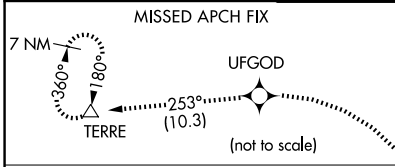
RNAV (RNP) Z RWY 3

IDAHO FALLS RGNL (IDA)

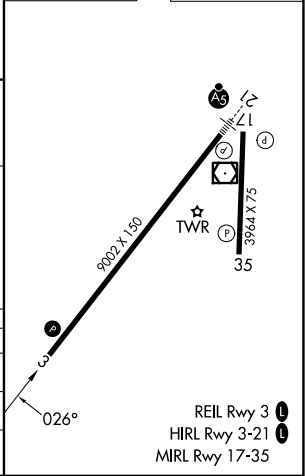
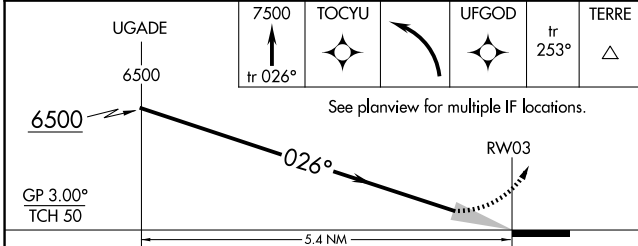
APP CRS	Rwy Ldg	9002
026°	TDZE	4744
	Apt Elev	4744

RNP AR APCH-GPS.		
For uncompensated Baro-VNAV systems, procedure NA below -27°C or above 54°C.		
ATIS	SALT LAKE CENTER	IDAHO FALLS TOWER * 118.5 (CTAF) 0 257.8
135.325	128.35 239.25	

MISSED APPROACH: Climb to 7500 on track 026° to TOCYU, left turn to UFGOD, and on track 253° to TERRE and hold.	GND CON	CLNC DEL	GCO	UNICOM
	121.7	121.7	121.725	122.95



ELEV 4744	D	TDZE 4744
-----------	----------	-----------



CATEGORY	A	B	C	D
RNP 0.11 DA		5050-7 $\frac{7}{8}$	306 (400- $\frac{7}{8}$)	
RNP 0.30 DA		5146-1 $\frac{1}{8}$	402 (500-1 $\frac{1}{8}$)	

AUTHORIZATION REQUIRED

NW-1, 11 JUN 2026 to 09 JUL 2026

NW-1, 11 JUN 2026 to 09 JUL 2026