

WAAS CH 66000 W17A	APP CRS 166°	Rwy Ldg 3400 TDZE 2714 Apt Elev 2718
--	------------------------	---

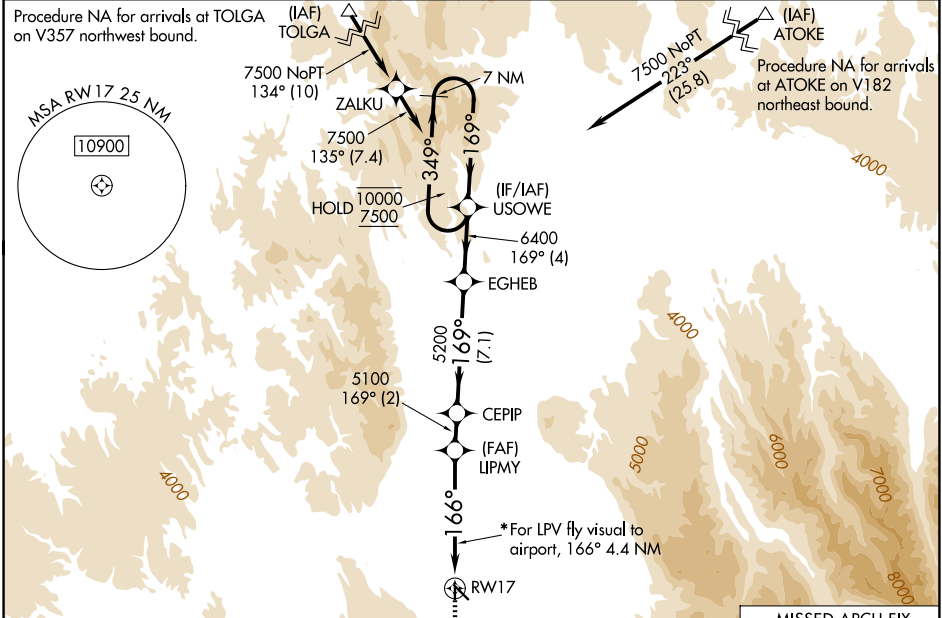
RNAV (GPS) RWY 17

LA GRANDE/UNION COUNTY (L.G.D)

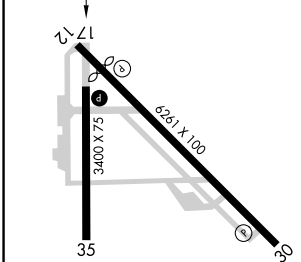
RNP APCH - GPS.
⚠ Circling NA for Cats C and D southwest of Rwy 12-30.
⚠ Fly visual to airport authorized during day only.
❄ -16°C *Day visibility minimums 3 SM.

MISSED APPROACH: Climb to 4600 then climbing left turn to 9000 direct NUDEQ and hold, continue climb-in-hold to 9000.

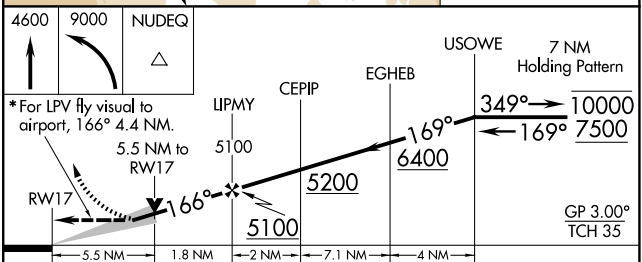
AWOS-3PT 135.075	SEATTLE CENTER 132.6 269.35	UNICOM 122.8 (CTAF)
----------------------------	---------------------------------------	-------------------------------



ELEV 2718	D	TDZE 2714
-----------	----------	-----------



REIL Rwy 30
 REIL Rwy 17 and 35 **Ⓛ**
 MRL Rwy 12-30 and 17-35 **Ⓛ**



CATEGORY	A	B	C	D
LPV DA*	4157-6 1443 (1500-6)			
LNAV MDA	4540-1¼ 1826 (1900-1¼)	4540-1½ 1826 (1900-1½)	4560-3 1846 (1900-3)	4580-3 1866 (1900-3)
CIRCLING	4540-1¼ 1822 (1900-1¼)	4540-1½ 1822 (1900-1½)	4560-3 1842 (1900-3)	4580-3 1862 (1900-3)

NW-1, 11 JUN 2026 to 09 JUL 2026

NW-1, 11 JUN 2026 to 09 JUL 2026