

|   |                        |                             |   |
|---|------------------------|-----------------------------|---|
| LOC/DME I-GWA<br><b>109.7</b><br>Chan <b>34</b> | APP CRS<br><b>139°</b> | Rwy Ldg<br>TDZE<br>Apt Elev | <b>8000</b><br><b>1260</b><br><b>1268</b> |
|---|------------------------|-----------------------------|---|

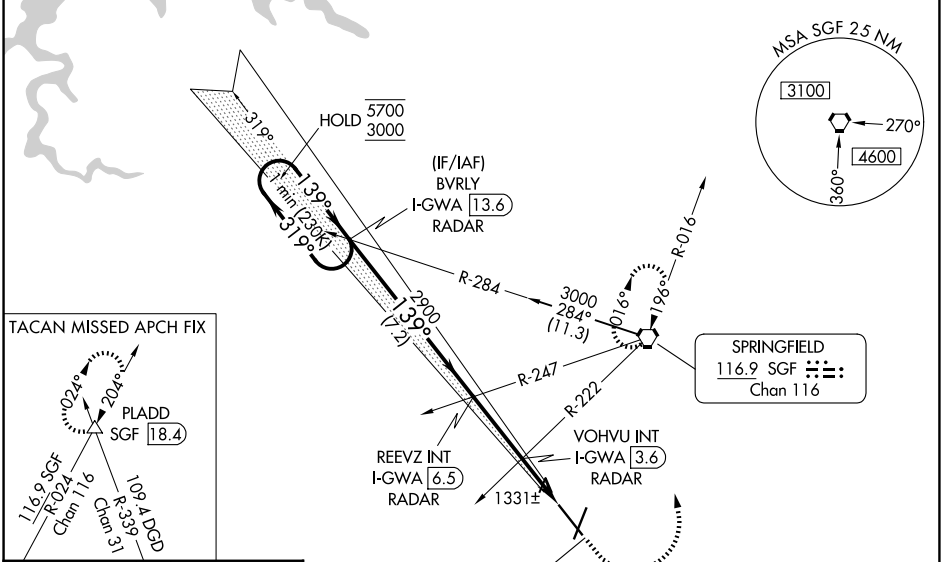
# ILS or LOC RWY 14

SPRINGFIELD-BRANSON NTL (SGF)

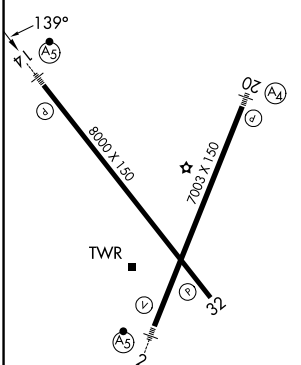
**V** VDP NA when using HFJ altimeter setting. When local altimeter setting not received, use HFJ altimeter setting and increase S-ILS 14 DA to 1550 feet; increase all MDAs 100 feet and S-LOC 14 visibility Cat C/D/E to RVR 4000 and Circling visibility Cat C/D 1/2 SM. For inop ALS, increase S-ILS 14 Cat E visibility to RVR 4000, and increase S-LOC 14 Cat C/D/E visibility to 2 SM. \*RVR 1800 authorized with use of FD or AP or HUD to DA (NA when using HFJ altimeter setting).

**MALS**  
MISSED APPROACH: Climb to 1800 then climbing left turn to 3000 direct SGF VORTAC and hold, continue climb in hold to 3000. (TACAN aircraft continue on SGF VORTAC R-024 to PLADD INT and hold northeast, right turn, 204° inbound).

|                        |  |   |                                |
|------------------------|--|---|--------------------------------|
| ATIS<br><b>135.125</b> | SPRINGFIELD APP CON<br><b>124.95 290.5</b> | SPRINGFIELD TOWER<br><b>119.9 257.8</b> | GND CON<br><b>121.9 251.15</b> |
|------------------------|--|---|--------------------------------|



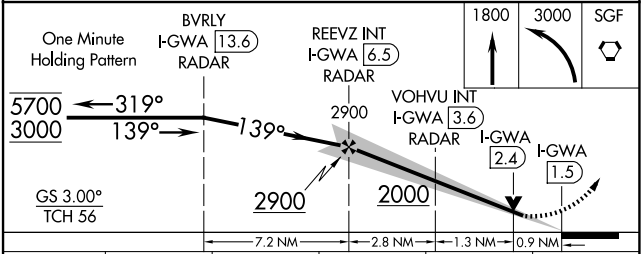
|           |          |           |
|-----------|----------|-----------|
| ELEV 1268 | <b>D</b> | TDZE 1260 |
|-----------|----------|-----------|



REIL Rwy 32  
HIRL Rws 2-20 and 14-32

FAF to MAP 5 NM

|         |      |      |      |      |      |
|---------|------|------|------|------|------|
| Knots   | 60   | 90   | 120  | 150  | 180  |
| Min:Sec | 5:00 | 3:20 | 2:30 | 2:00 | 1:40 |



| CATEGORY  | A                     | B                     | C                             | D                     | E                     |
|-----------|-----------------------|-----------------------|-------------------------------|-----------------------|-----------------------|
| S-ILS 14* | 1460/24               |                       | 200 (200-1/2)                 |                       |                       |
| S-LOC 14  | 1600/24               | 340 (400-1/2)         | 1600/26                       |                       | 340 (400-1/2)         |
| CIRCLING  | 1760-1<br>492 (500-1) | 1820-1<br>552 (600-1) | 1820-1 1/2<br>552 (600-1 1/2) | 1920-2<br>652 (700-2) | 2080-3<br>812 (900-3) |

NC-3, 11 JUN 2026 to 09 JUL 2026

NC-3, 11 JUN 2026 to 09 JUL 2026