

| | | | |
|---|------------------------|-----------------------------|---|
| LOC/DME I-SGF 109.9 Chan 36 | APP CRS 019° | Rwy Ldg TDZE Apt Elev | 7003 1265 1268 |
|---|------------------------|-----------------------------|---|

ILS or LOC RWY 2

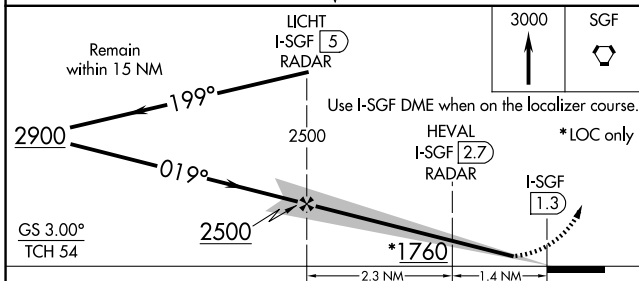
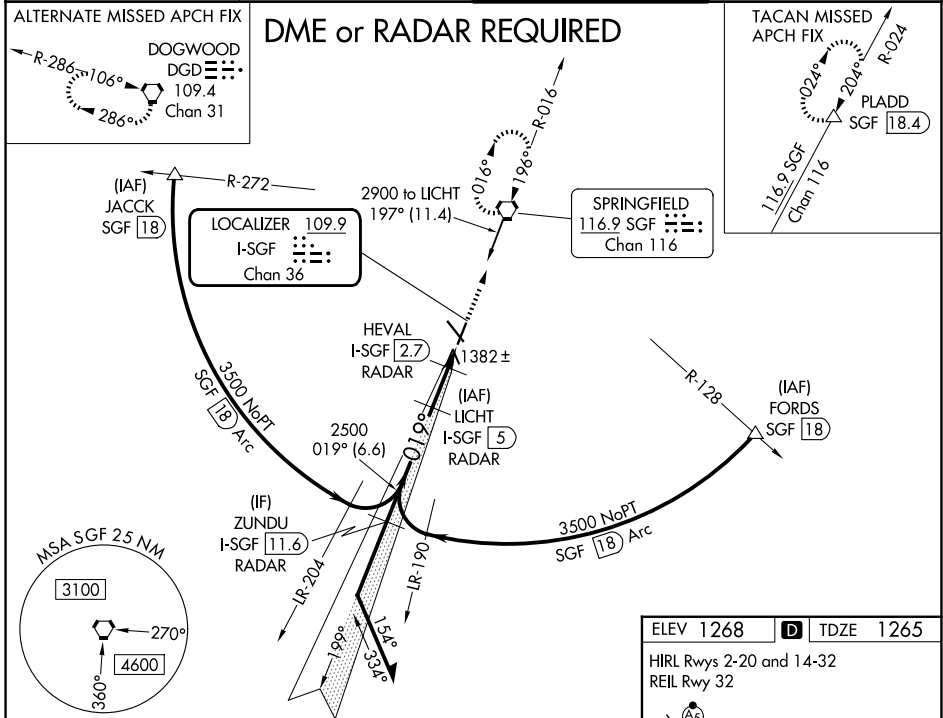
SPRINGFIELD-BRANSON NTL (SGF)

⚠ DME or RADAR required. For inop MALS/R, increase S-ILS 2 Cat E visibility to RVR 4000, and S-LOC 2 Cat E visibility to 1¼ mile. #RVR 1800 authorized with use of FD or AP or HUD to DA.

MALS/R

MISSED APPROACH: Climb to 3000 direct SGF VORTAC and hold (TACAN aircraft continue on SGF VORTAC R-024 to PLADD/SGF 18.4 DME and hold northeast, right turn, 204° inbound).

| | | | |
|------------------------|--|---|--------------------------------|
| ATIS 135.125 | SPRINGFIELD APP CON 124.95 290.5 | SPRINGFIELD TOWER 119.9 257.8 | GND CON 121.9 251.15 |
|------------------------|--|---|--------------------------------|



ELEV 1268 **D** TDZE 1265

HIRL Rwy 2-20 and 14-32
REIL Rwy 32

TWR

019°

8000x150

7003x150

32

FAF to MAP 3.7 NM

| | | | | | |
|---------|------|------|------|------|------|
| Knots | 60 | 90 | 120 | 150 | 180 |
| Min:Sec | 3:42 | 2:28 | 1:51 | 1:29 | 1:14 |

| CATEGORY | A | B | C | D | E |
|----------|-----------------------|-----------------------|-------------------------|-----------------------|-----------------------|
| S-ILS 2# | | 1465/24 | 200 (200-½) | | |
| S-LOC 2 | 1700/24 | 435 (500-½) | 1700/40 | 435 (500-¾) | |
| CIRCLING | 1760-1 492 (500-1) | 1820-1 552 (600-1) | 1820-1½ 552 (600-1½) | 1920-2 652 (700-2) | 2080-3 812 (900-3) |

NC-3, 11 JUN 2026 to 09 JUL 2026

NC-3, 11 JUN 2026 to 09 JUL 2026