


WAAS CH 40121 W14A	APP CRS 139°	Rwy Ldg TDZE Apt Elev	8000 1260 1268
--	------------------------	-----------------------------	---

RNAV (GPS) RWY 14

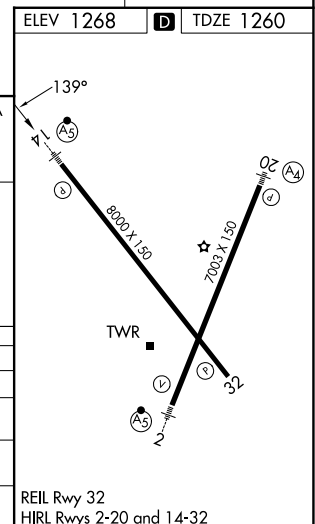
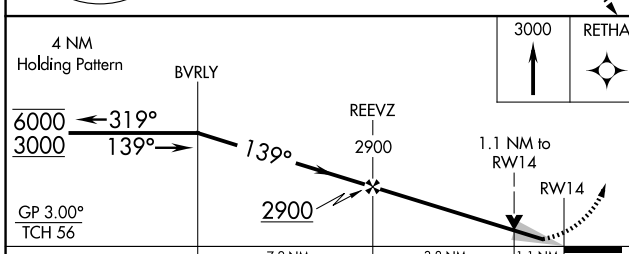
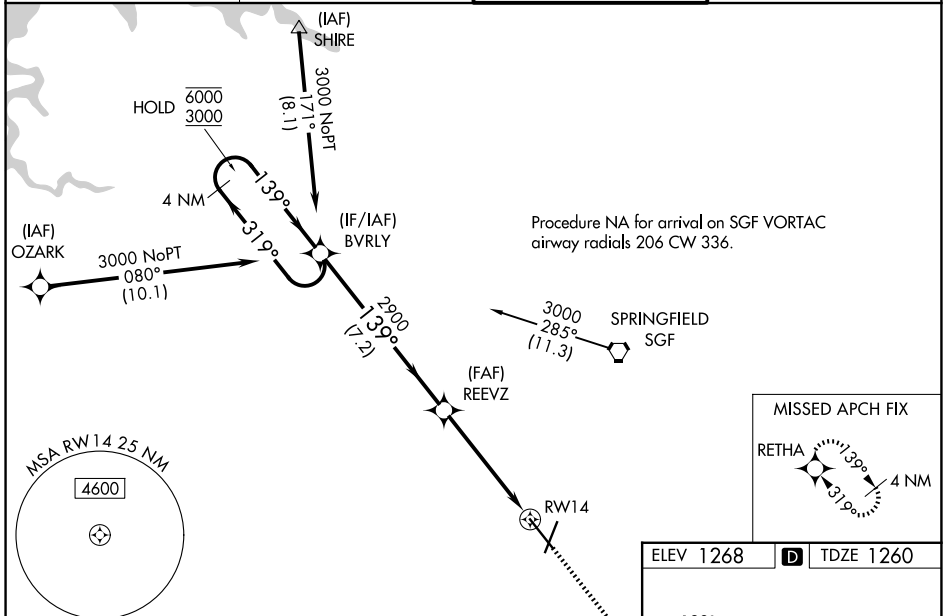
SPRINGFIELD-BRANSON NTL (SGF)

RNP APCH - GPS.

⚠ For uncompensated Baro-VNAV systems, LNAV/VNAV NA below -16°C or above 54°C.
 ⚠ Baro-VNAV and VDP NA when using HFJ altimeter setting. When local altimeter setting not received, use HFJ altimeter setting and increase LPV DA to 1550 feet; increase LNAV/VNAV DA to 1646 feet and all visibilities to RVR 3500. Increase all MDAs 100 feet and LNAV visibility Cat C/D to RVR 5500 and Circling visibility Cat C/D ½ SM. For inop ALS, increase LNAV/VNAV all Cats visibility to RVR 4500 and LNAV Cat C/D to RVR 6000.
 *RVR 1800 authorized with use of FD or AP or HUD to DA (NA when using HFJ altimeter setting).

MALS R  MISSED APPROACH: Climb to 3000 direct RETHA and hold.

ATIS 135.125	SPRINGFIELD APP CON 124.95 290.5	SPRINGFIELD TOWER 119.9 257.8	GND CON 121.9 251.15
------------------------	--	---	--------------------------------



CATEGORY	A	B	C	D
LPV DA*		1460/24	200 (200-½)	
LNAV/VNAV DA		1556/24	296 (300-½)	
LNAV MDA	1680/24	420 (500-½)	1680/40	420 (500-¾)
CIRCLING	1760-1 492 (500-1)	1820-1 552 (600-1)	1820-1½ 552 (600-1½)	1920-2 652 (700-2)

NC-3, 11 JUN 2026 to 09 JUL 2026

NC-3, 11 JUN 2026 to 09 JUL 2026