


| | | | |
|--|------------------------|-----------------------------|---|
| WAAS CH 86214 W02A | APP CRS 019° | Rwy Ldg TDZE Apt Elev | 7003 1265 1268 |
|--|------------------------|-----------------------------|---|

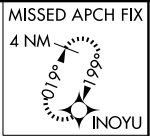
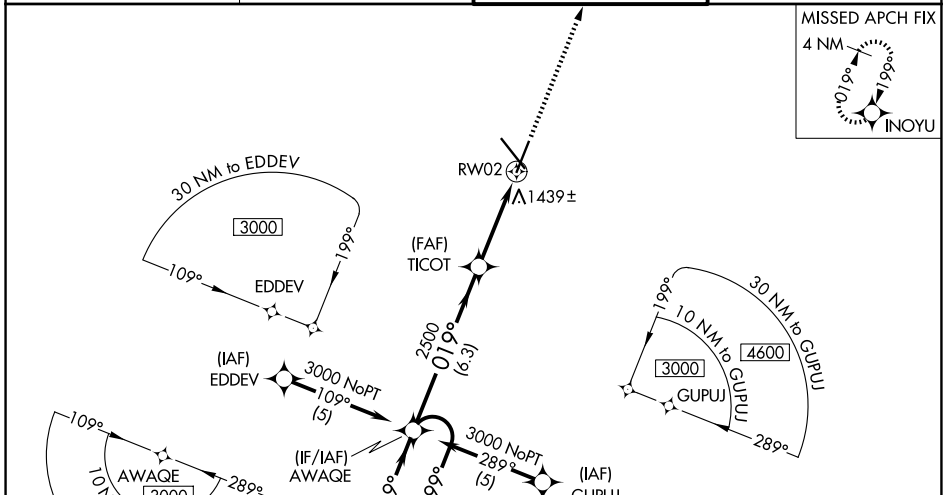
RNAV (GPS) RWY 2

SPRINGFIELD-BRANSON NTL (SGF)

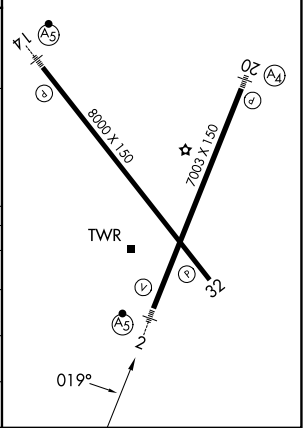
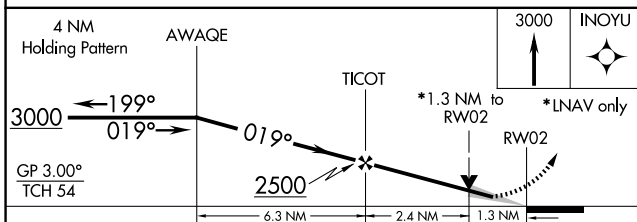
⚠ DME/DME RNP -0.3 NA. For uncompensated Baro-VNAV systems, LNAV/VNAV NA below -17°C (2°F) or above 45°C (113°F). Baro-VNAV and VDP NA when using Monett altimeter setting. For inoperative MALSRS, increase LNAV Cat A and B visibility to RVR 5000. When local altimeter setting not received, use Monett altimeter setting and increase all DAs 90 feet and all MDAs 100 feet, increase LPV visibility all Cats to RVR 5000, LNAV/VNAV visibility all Cats to 1½ miles, LNAV visibility Cat C to RVR 5000 and Cat D to RVR 6000, and increase visibility Circling Cat C to 1¾ miles, and Cat D to 2 miles. For inoperative MALSRS, when using Monett altimeter setting, increase LPV visibility all Cats to 1½, LNAV Cat A and B visibility to RVR 5000.

MALSRS

 MISSED APPROACH: Climb to 3000 direct INOYU and hold.

| | | | |
|------------------------|--|---|--------------------------------|
| ATIS 135.125 | SPRINGFIELD APP CON 124.95 290.5 | SPRINGFIELD TOWER 119.9 257.8 | GND CON 121.9 251.15 |
|------------------------|--|---|--------------------------------|



| | |
|-------------------------|--------------------|
| ELEV 1268 | D TDZE 1265 |
| REIL Rwy 32 | |
| HIRL Rwy 2-20 and 14-32 | |



| CATEGORY | A | B | C | D |
|--------------|-----------------------|-----------------------|-------------------------|-----------------------|
| LPV DA | 1590/40 | | 325 (400-¾) | |
| LNAV/VNAV DA | 1754/60 | | 489 (500-1¼) | |
| LNAV MDA | 1720/40 | | 455 (500-¾) | |
| | 1720/50 | | 455 (500-1) | |
| CIRCLING | 1760-1 492 (500-1) | 1820-1 552 (600-1) | 1820-1½ 552 (600-1½) | 1920-2 652 (700-2) |

NC-3, 11 JUN 2026 to 09 JUL 2026

NC-3, 11 JUN 2026 to 09 JUL 2026