

WAAS CH 72933 W32A	APP CRS 319°	Rwy Ldg TDZE Apt Elev	8000 1268 1268
--	------------------------	-----------------------------	---

RNAV (GPS) RWY 32

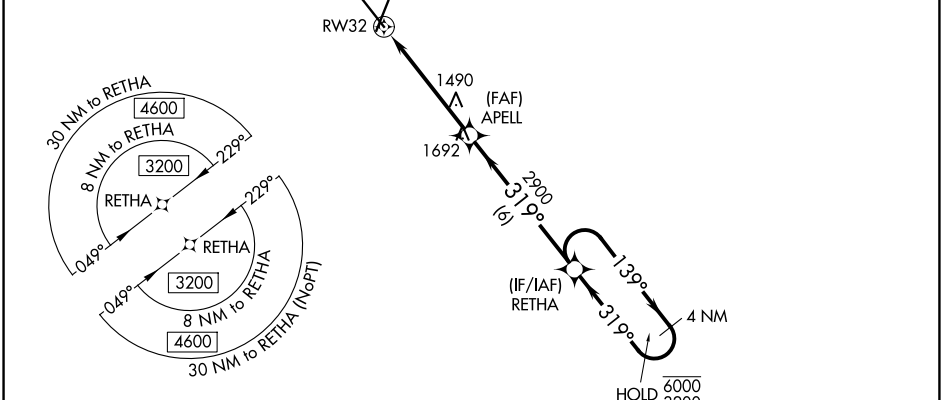
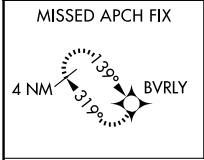
SPRINGFIELD-BRANSON NTL (SGF)

RNP APCH - GPS.

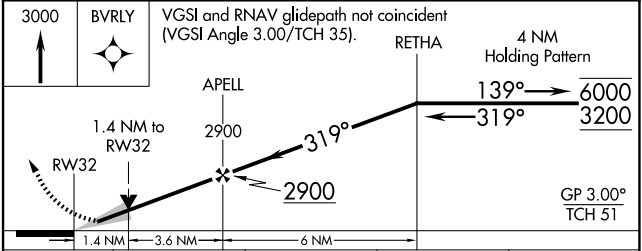
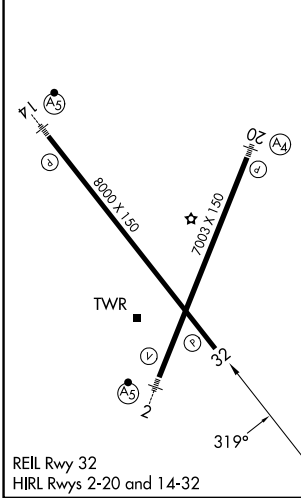
⚠ For uncompensated Baro-VNAV systems, LNAV/VNAV NA below -16°C or above 54°C. Baro-VNAV and VDP NA when using HFJ altimeter setting. When local altimeter setting not received, use HFJ altimeter setting and increase LPV DA to 1608 feet and all visibilities ¼ SM. Increase LNAV/VNAV DA to 1820 feet and all visibilities ¼ SM. Increase all MDAs 100 feet and LNAV visibility Cat C and D ¼ SM, and Circling visibility Cat C and D ½ SM.

MISSED APPROACH: Climb to 3000 direct BVRLY and hold.

ATIS 135.125	SPRINGFIELD APP CON 124.95 290.5	SPRINGFIELD TOWER 119.9 257.8	GND CON 121.9 251.15
------------------------	--	---	--------------------------------



ELEV 1268	D	TDZE 1268
-----------	----------	-----------



CATEGORY	A	B	C	D
LPV DA		1518-¾	250 (300-¾)	
LNAV/VNAV DA		1730-1⅜	462 (500-1⅜)	
LNAV MDA	1740-1	472 (500-1)	1740-1⅜	472 (500-1⅜)
CIRCLING	1760-1 492 (500-1)	1820-1 552 (600-1)	1820-1½ 552 (600-1½)	1920-2 652 (700-2)

NC-3, 11 JUN 2026 to 09 JUL 2026

NC-3, 11 JUN 2026 to 09 JUL 2026