

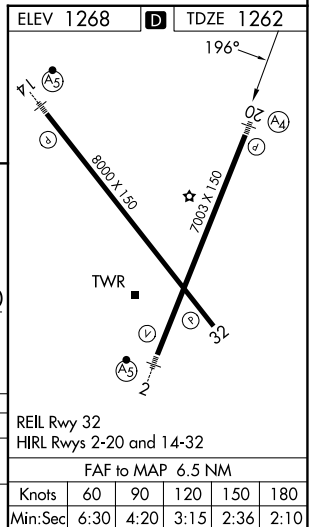
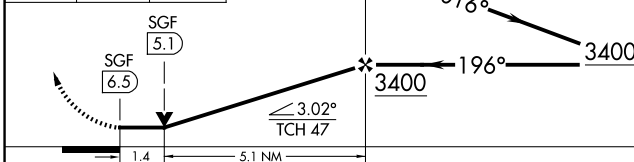
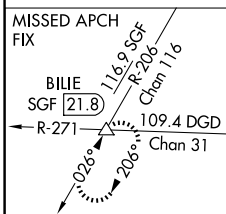
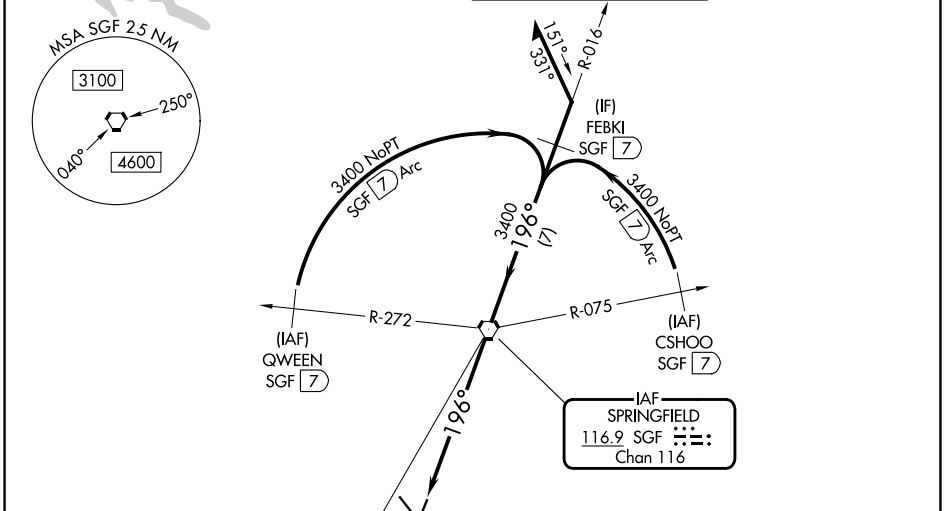
VORTAC SGF <b>116.9</b> Chan <b>116</b>	APP CRS <b>196°</b>	Rwy Ldg TDZE Apt Elev	<b>7003</b> <b>1262</b> <b>1268</b>
---	------------------------	-----------------------------	---

# VOR or TACAN RWY 20

SPRINGFIELD-BRANSON NTL (SGF)

DME required.		MALS A4	MISSED APPROACH: Climb to 3000 then right turn to intercept SGF R-206 to BILIE INT/SGF 21.8 DME and hold.
<p>▼ NA Rwy 20 helicopter visibility reduction below 3/4 SM NA. For inop ALS, increase S-20 Cat E to 1 3/8 SM. VDP NA when using HFJ altimeter setting. When local altimeter setting not received, use HFJ altimeter setting: increase all MDAs 100 feet; increase S-20 visibility Cats C, D and E 1/4 SM, and Circling visibility Cat C and D 1/2 SM. For inop ALS, use HFJ altimeter setting: increase S-20 visibility Cats C, D and E to 1 3/4 SM.</p>			

ATIS <b>135.125</b>	SPRINGFIELD APP CON <b>124.95 290.5</b>	SPRINGFIELD TOWER <b>119.9 257.8</b>	GND CON <b>121.9 251.15</b>
------------------------	--	---	--------------------------------



CATEGORY	A	B	C	D	E
S-20	1760-3/4 498 (500-3/4)		1760-1 1/8 498 (500-1 1/8)		
CIRCLING	1760-1 492 (500-1)	1820-1 552 (600-1)	1820-1 1/2 652 (600-1 1/2)	1920-2 652 (700-2)	2080-3 812 (900-3)

NC-3, 11 JUN 2026 to 09 JUL 2026

NC-3, 11 JUN 2026 to 09 JUL 2026