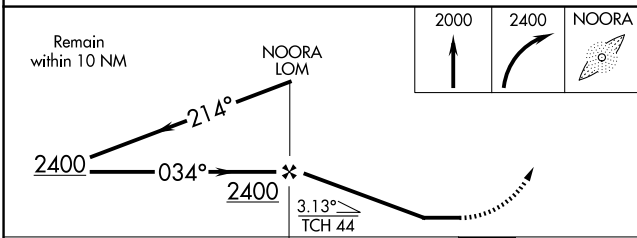
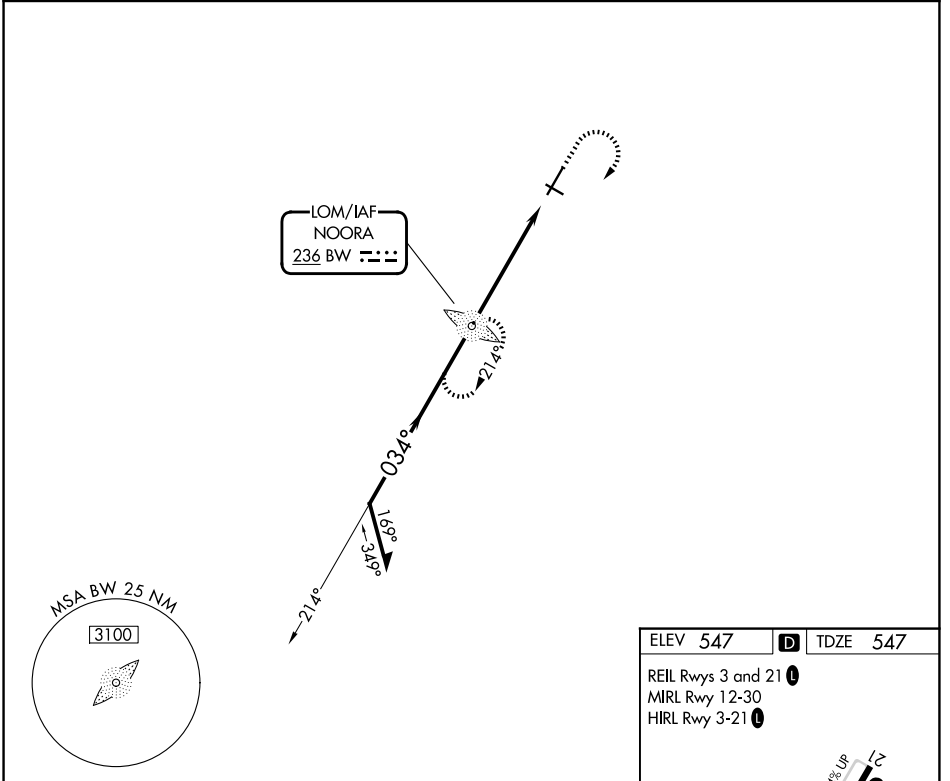


LOM BW	APP CRS	Rwy Ldg	<b>6500</b>
<b>236</b>	<b>034°</b>	TDZE	<b>547</b>
		Apt Elev	<b>547</b>

# NDB RWY 3

BOWLING GREEN-WARREN COUNTY RGNL (BWG)

<p><b>▽</b> <b>△ NA</b> Circling to Rwy 30 NA at night.</p>		<p>MISSED APPROACH: Climb to 2000 then climbing right turn to 2400 direct NOORA LOM and hold.</p>	
ASOS	MEMPHIS CENTER	UNICOM	
<b>127.825</b>	<b>133.85 285.5</b>	<b>123.0 (CTAF) <b>L</b></b>	



ELEV 547 **D** TDZE 547

REIL Rwy 3 and 21 **L**  
 MIRL Rwy 12-30  
 HIRL Rwy 3-21 **L**

FAF to MAP 5.4 NM

Knots	60	90	120	150	180
Min:Sec	5:24	3:36	2:42	2:10	1:48

SE-1, 11 JUN 2026 to 09 JUL 2026

SE-1, 11 JUN 2026 to 09 JUL 2026