

WAAS CH 57907 W21A	APP CRS 214°	Rwy Ldg TDZE Apt Elev	6500 522 547
--	------------------------	-----------------------------	---

RNAV (GPS) RWY 21

BOWLING GREEN-WARREN COUNTY RGNL (BWG)

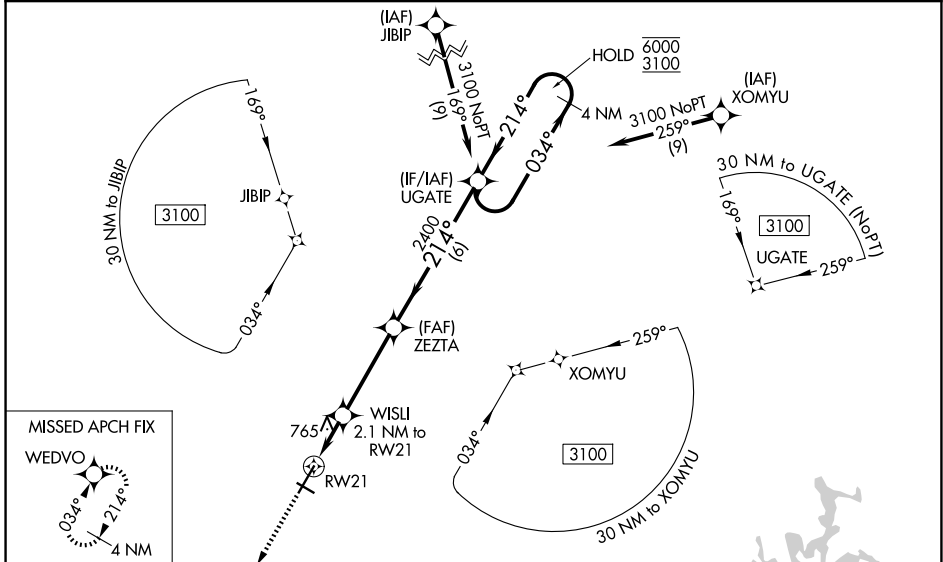
RNP APCH - GPS.

▼ For uncompensated Baro-VNAV systems, LNAV/VNAV NA below -12°C or above 54°C. Baro-VNAV and VDP NA when using GLW altimeter setting. Circling Rwy 30 NA at night.

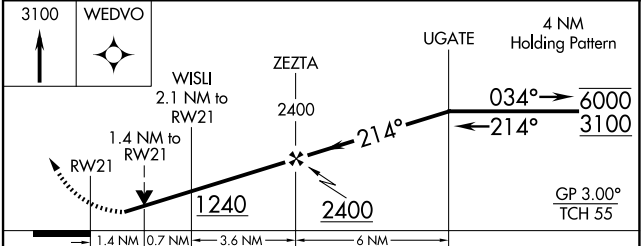
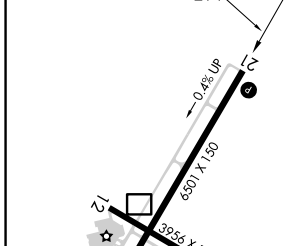
▲ Rwy 21 helicopter visibility reduction below ¾ SM NA. When local altimeter setting not received, use GLW altimeter setting and increase LPV DA to 884 feet and all visibilities ½ SM. Increase LNAV/VNAV DA to 1150 feet and all visibilities ½ SM. Increase all MDAs 80 feet and LNAV/visibility Cat C/D ¼ SM, and Circling visibility Cat C/D ¼ SM.

MISSED APPROACH: Climb to 3100 direct WEDVO and hold.

ASOS 127.825	MEMPHIS CENTER 133.85 285.5	UNICOM 123.0 (CTAF) ①
------------------------	---------------------------------------	---------------------------------



ELEV 547	D	TDZE 522
----------	----------	----------



CATEGORY	A	B	C	D
LPV DA		807-7/8	285 (300-7/8)	
LNAV/VNAV DA		1073-15/8	551 (600-15/8)	
LNAV MDA	1020-1	498 (500-1)	1020-13/8	498 (500-13/8)
CIRCLING	1020-1 473 (500-1)	1120-1 573 (600-1)	1160-13/4 613 (700-13/4)	1200-2 653 (700-2)

REIL Rwy 3 and 21 ①
MIRL Rwy 12-30
HIRL Rwy 3-21 ①

SE-1, 11 JUN 2026 to 09 JUL 2026

SE-1, 11 JUN 2026 to 09 JUL 2026