

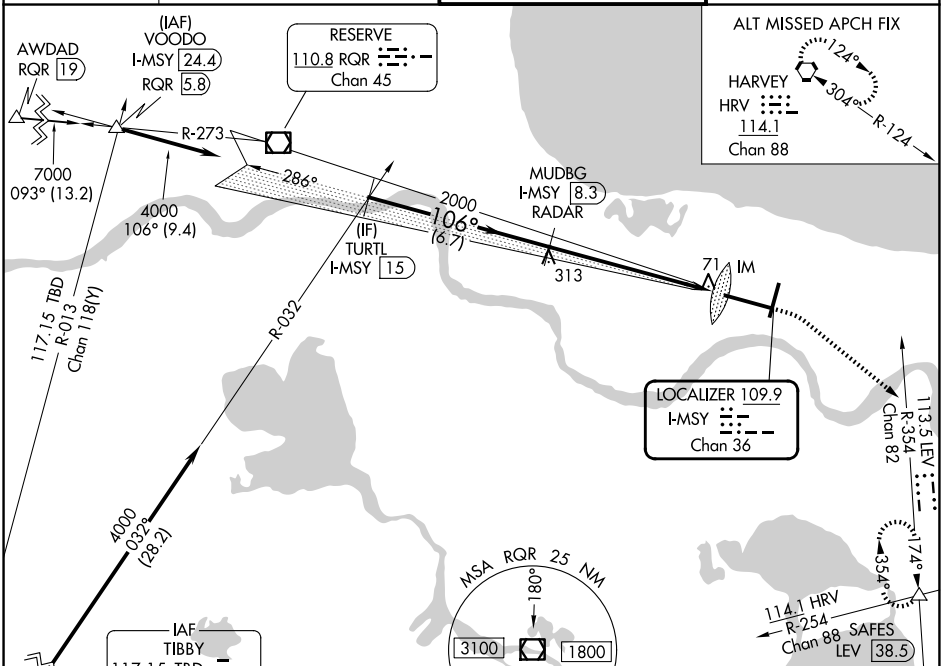
LOC/DME I-MSY 109.9 Chan 36	APP CRS 106°	Rwy Ldg 9800 TDZE 3 Apt Elev 3
---	------------------------	---

ILS RWY 11 (SA CAT I)

LOUIS ARMSTRONG NEW ORLEANS INTL (MSY)

RADAR or DME required. Requires specific OPSPEC, MSPEC, or LOA approval and use of HUD to DH.		ALSF-2 	MISSED APPROACH: Climb to 800 then climbing right turn to 2000 on heading 130° and on LEV VORTAC R-354 to SAFES INT/LEV 38.5 DME and hold.
--	--	------------	--

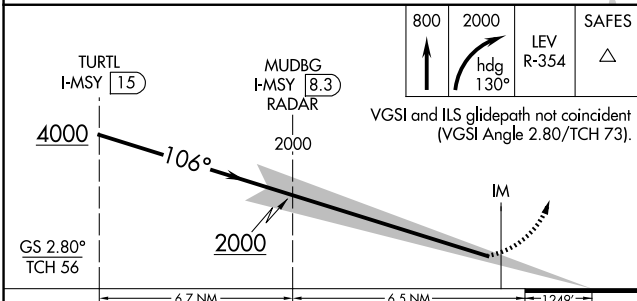
D-ATIS 127.55	NEW ORLEANS APP CON 125.5 350.35 (W) 133.15 290.3 (E)	NEW ORLEANS TOWER 119.5 254.3	GND CON 121.9 273.525
-------------------------	---	---	---------------------------------



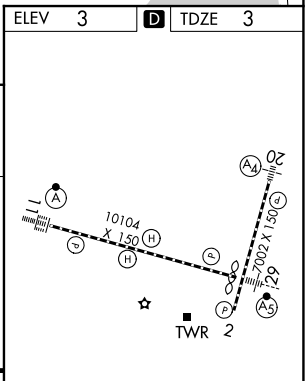
SC-4, 11 JUN 2026 to 09 JUL 2026

SC-4, 11 JUN 2026 to 09 JUL 2026

ELEV 3	TDZE 3
--------	--------



CATEGORY	A	B	C	D
S-ILS 11	RA 150/14		150	DA 153



SA CATEGORY I ILS - SPECIAL AIRCREW & AIRCRAFT CERTIFICATION REQUIRED

RLS Rwy 2
TDZ/CL Rwy 11
HIRL All Runways