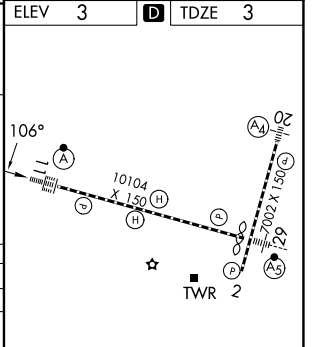
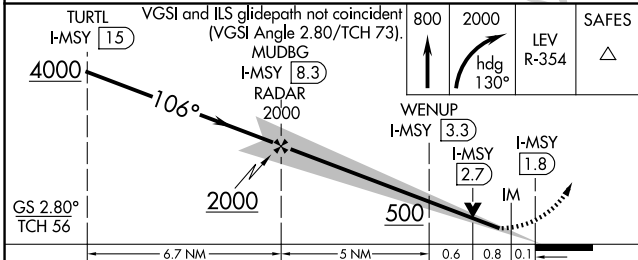
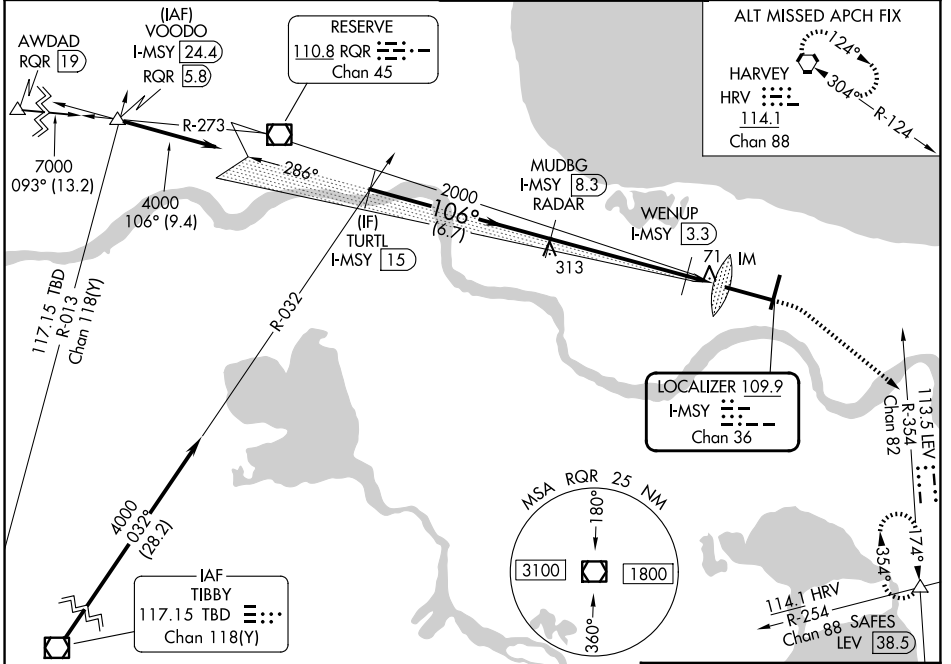


LOC/DME I-MSY <b>109.9</b> Chan <b>36</b>	APP CRS <b>106°</b>	Rwy Ldg <b>9800</b> TDZE <b>3</b> Apt Elev <b>3</b>
---	------------------------	---

# ILS or LOC RWY 11

## LOUIS ARMSTRONG NEW ORLEANS INTL (MSY)

RADAR or DME required.		ALSF-2 	MISSED APPROACH: Climb to 800 then climbing right turn to 2000 on heading 130° and on LEV VORTAC R-354 to SAFES INT/LEV 38.5 DME and hold.
D-ATIS <b>127.55</b>	NEW ORLEANS APP CON <b>125.5 350.35</b> <b>133.15 290.3</b> (W) (E)	NEW ORLEANS TOWER <b>119.5 254.3</b>	GND CON <b>121.9 273.525</b>



CATEGORY	A	B	C	D
S-ILS 11	203/18		200 (200-½)	
S-LOC 11	500/24	497 (500-½)	500/50	497 (500-1)
CIRCLING	520-1	540-1	580-1½	580-2
	517 (600-1)	537 (600-1)	577 (600-1½)	577 (600-2)
WENUP FIX MINIMUMS				
S-LOC 11	340/24	337 (400-½)	340/26	337 (400-½)
CIRCLING	520-1	540-1	580-1½	580-2
	517 (600-1)	537 (600-1)	577 (600-1½)	577 (600-2)

ELEV	3	TDZE	3
RLLS RWY 2 TDZ/CL RWY 11 HIRL All Runways			
FAF to MAP 6.5 NM			
Knots	60	90	120 150 180
Min:Sec	6:30	4:20	3:15 2:36 2:10

SC-4, 11 JUN 2026 to 09 JUL 2026

SC-4, 11 JUN 2026 to 09 JUL 2026