

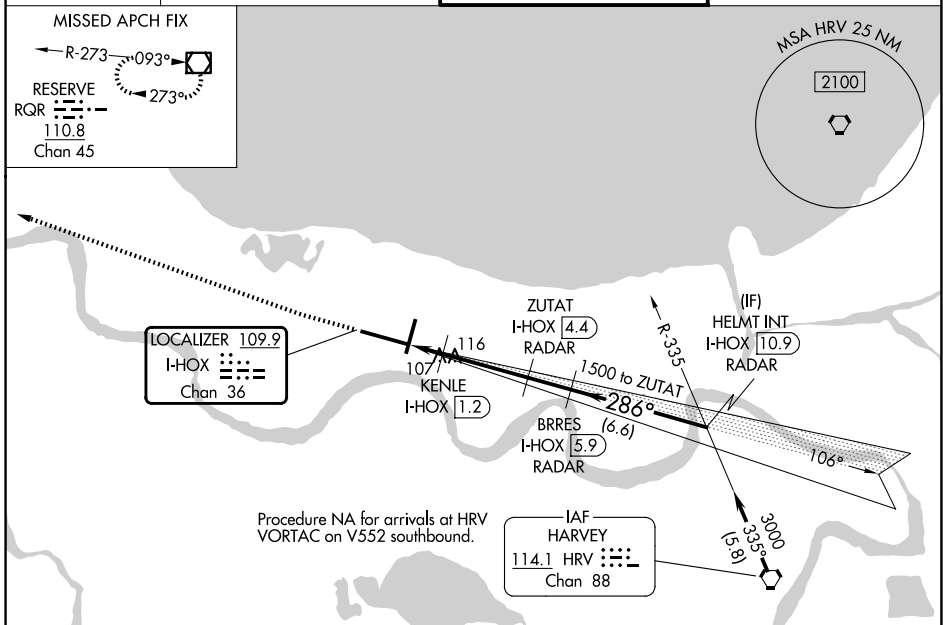
LOC/DME I-HOX <b>109.9</b> Chan <b>36</b>	APP CRS <b>286°</b>	Rwy Ldg <b>9800</b> TDZE <b>2</b> Apt Elev <b>3</b>
---	------------------------	---

# ILS or LOC RWY 29

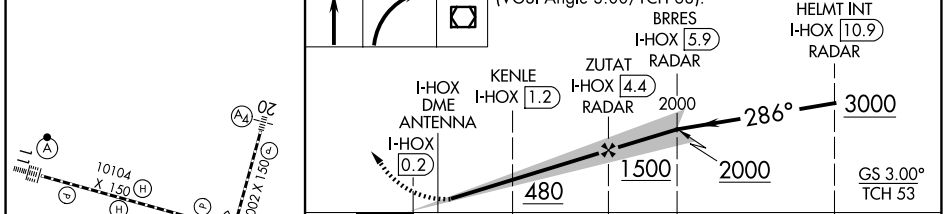
LOUIS ARMSTRONG NEW ORLEANS INTL (MSY)

DME or RADAR required.	MALSR 	MISSED APPROACH: Climb to 600 then climbing right turn to 3000 direct RQR VOR/DME and hold.
▼ For inop ALS, increase S-LOC 29 Cat C/D visibility to 1 3/8 SM and increase KENLE Fix Minimums S-LOC 29 Cat C/D visibility to RVR 5500. * RVR 1800 authorized with use of FD or AP or HUD to DA.		

D-ATIS <b>127.55</b>	NEW ORLEANS APP CON <b>125.5 350.35 (W)</b> <b>133.15 290.3 (E)</b>	NEW ORLEANS TOWER <b>119.5 254.3</b>	GND CON <b>121.9 273.525</b>
-------------------------	---	---	---------------------------------



ELEV 3	<b>D</b>	TDZE 2	600	3000	RQR	VGSI and ILS glidepath not coincident (VGSI Angle 3.00/TCH 68).
--------	----------	--------	-----	------	-----	---



RLLS Rwy 2 TDZ/CL Rwy 11 HIRL All Runways FAF to MAP 4.5 NM Knots: 60 90 120 150 180 Min:Sec: 4:30 3:00 2:15 1:48 1:30	CATEGORY S-ILS 29* S-LOC 29 CIRCLING S-LOC 29 CIRCLING	HELMT INT I-HOX 10.9 RADAR BRRES I-HOX 5.9 ZUTAT I-HOX 4.4 RADAR KENLE I-HOX 1.2 I-HOX DME ANTENNA I-HOX 0.2 2000 1500 480 3000 GS 3.00° TCH 53 1.4 NM   3.1 NM   1.6 NM   5 NM
		A   B   C   D 202/24   200 (200-1/2)   480/50   478 (500-1) 520-1   540-1   580-1 1/2   580-2 517 (600-1)   537 (600-1)   577 (600-1 1/2)   577 (600-2) KENLE FIX MINIMUMS 360/24   358 (400-1/2)   360/30   358 (400-3/4) 520-1   540-1   580-1 1/2   580-2 517 (600-1)   537 (600-1)   577 (600-1 1/2)   577 (600-2)

SC-4, 11 JUN 2026 to 09 JUL 2026

SC-4, 11 JUN 2026 to 09 JUL 2026