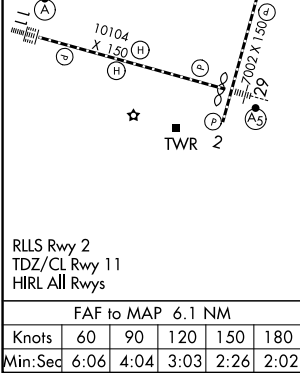
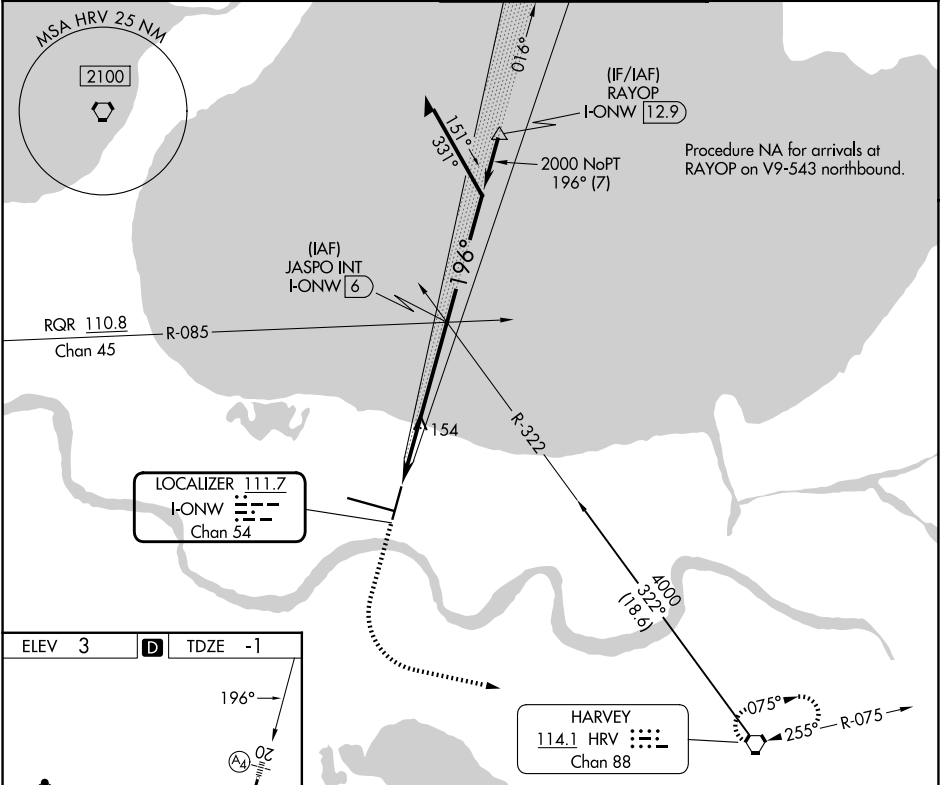


LOC/DME I-ONW 111.7 Chan 54	APP CRS 196°	Rwy Ldg 6948 TDZE -1 Apt Elev 3
---	------------------------	--

LOC RWY 20

LOUIS ARMSTRONG NEW ORLEANS INTL (MSY)

Rwy 20 helicopter visibility reduction below RVR 4000 NA.		MALS 	MISSED APPROACH: Climb to 1300 then climbing left turn to 2100 direct HRV VORTAC and hold.
D-ATIS 127.55	NEW ORLEANS APP CON 125.5 350.35 (W) 133.15 290.3 (E)	NEW ORLEANS TOWER 119.5 254.3	GND CON 121.9 273.525



1300 2100 HRV	I-ONW DME ANTENNA I-ONW 0.2 I-ONW 1	JASPO INT I-ONW 6 Remain within 10 NM				
			196° 016° 4000 2000 ≤ 3.00° TCH 52 -1.2 NM 5 NM			
CATEGORY	A	B	C	D		
S-20	420/40	421 (500-¾)	420/50	421 (500-1)		
CIRCLING	520-1 517 (600-1)	540-1 537 (600-1)	580-1½ 577 (600-1½)	580-2 577 (600-2)		

SC-4, 11 JUN 2026 to 09 JUL 2026

SC-4, 11 JUN 2026 to 09 JUL 2026