

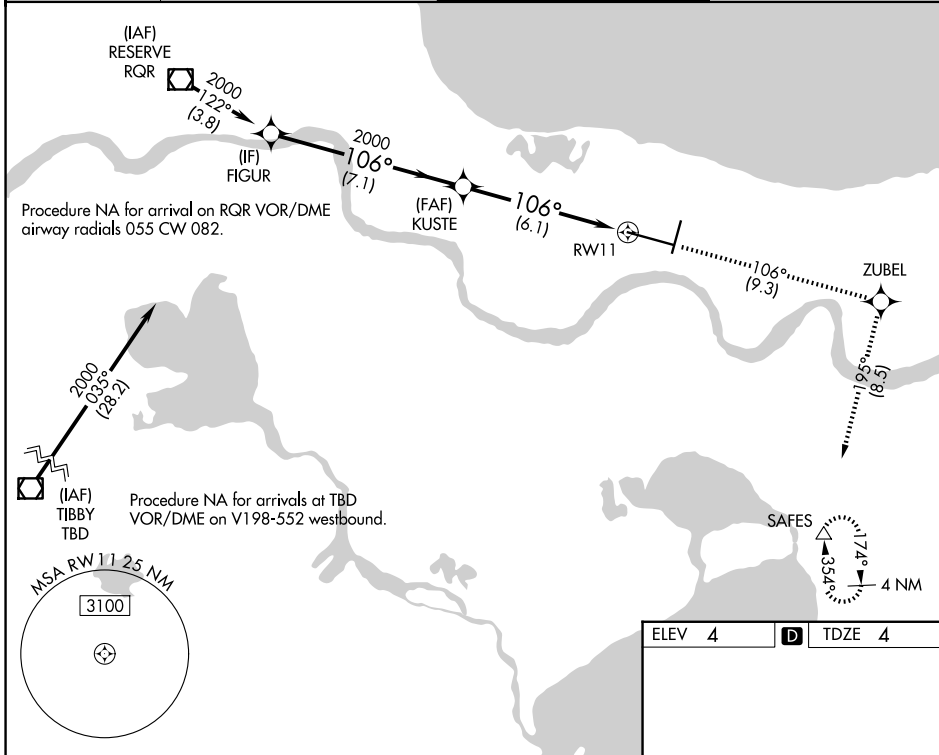
APP CRS	Rwy Ldg	9800
106°	TDZE	4
	Apt Elev	4

RNAV (RNP) Z RWY 11

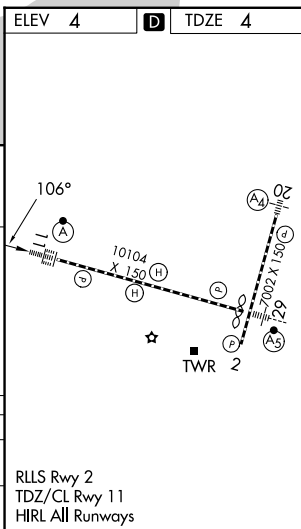
LOUIS ARMSTRONG NEW ORLEANS INTL (MSY)

RNP AR APCH - GPS.	ALSF-2	MISSED APPROACH: Climb to 2000 on track 106° to ZUBEL and on track 195° to SAFES and hold.
▼ For uncompensated Baro-VNAV systems, procedure NA below -1°C or above 54°C. For inop ALS, increase RNP 0.30 all Cats visibility to RVR 5500.		

D-ATIS 127.55	NEW ORLEANS APP CON 125.5 350.35 133.15 290.3 (W) (E)	NEW ORLEANS TOWER 119.5 254.3	GND CON 121.9 273.525
-------------------------	---	---	---------------------------------



VGSI and RNAV glidepath not coincident (VGSI Angle 2.80/TCH 73).	2000	ZUBEL	SAFES
	↑	tr 106°	tr 195°
FIGUR	KUSTE		
2000	2000		
GP 3.00°			
TCH 55			
	7.1 NM	6.1 NM	
CATEGORY	A	B	C
RNP 0.30 DA	367/35 363 (400-5/8)		
AUTHORIZATION REQUIRED			



SC-4, 11 JUN 2026 to 09 JUL 2026

SC-4, 11 JUN 2026 to 09 JUL 2026