

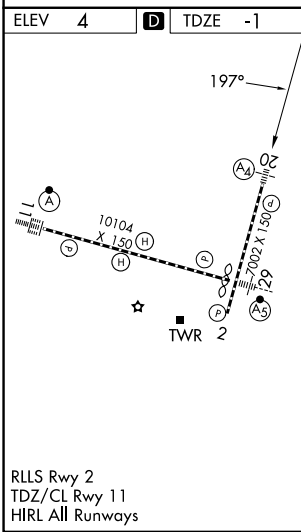
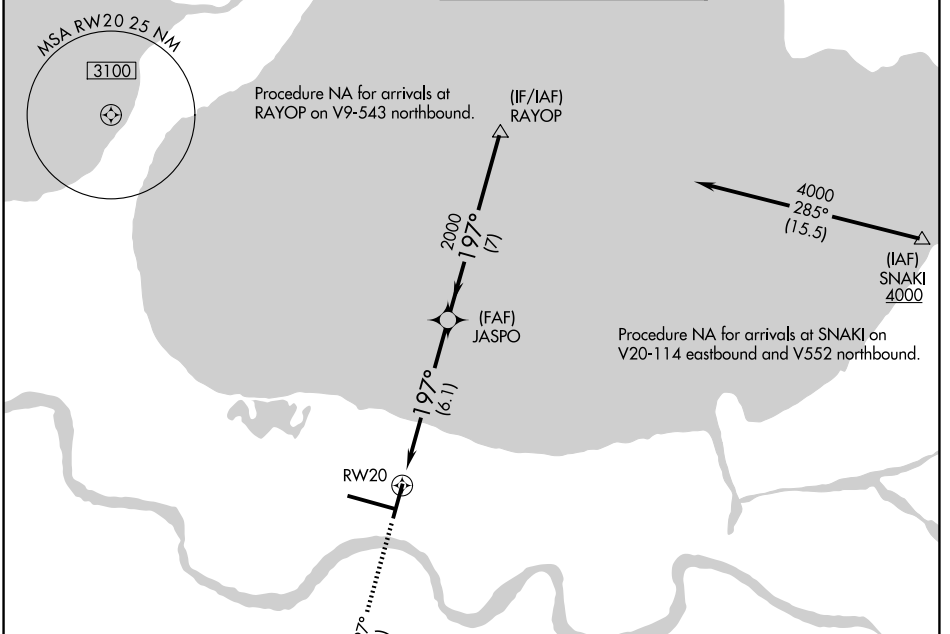
APP CRS <b>197°</b>	Rwy Ldg <b>6948</b>
	TDZE <b>-1</b>
	Apt Elev <b>4</b>

# RNAV (RNP) Z RWY 20

LOUIS ARMSTRONG NEW ORLEANS INTL (MSY)

RNP AR APCH - GPS.	MALS 	MISSED APPROACH: Climb to 2000 on track 197° to POLIY and track 109° to SAFES and hold.
For uncompensated Baro-VNAV systems, procedure NA below -1°C or above 54°C. For inop ALS, increase RNP 0.30 all Cats visibility to RVR 6000.		

D-ATIS <b>127.55</b>	NEW ORLEANS APP CON <b>125.5 350.35 (W)</b> <b>133.15 290.3 (E)</b>	NEW ORLEANS TOWER <b>119.5 254.3</b>	GND CON <b>121.9 273.525</b>
-------------------------	---	---	---------------------------------



	MISSED APCH FIX SAFES 				
2000	tr 197°	POLIY	tr 109°	SAFES	
		JASPO		RAYOP	4000
		2000		2000	
		RW20			GP 3.00° TCH 52
		6.1 NM		7 NM	
CATEGORY	A	B	C	D	
RNP 0.11 DA		363/40	364 (400-¾)		
RNP 0.30 DA		414/50	415 (500-1)		
<b>AUTHORIZATION REQUIRED</b>					

SC-4, 11 JUN 2026 to 09 JUL 2026

SC-4, 11 JUN 2026 to 09 JUL 2026