


APP CRS	Rwy Ldg	9800
287°	TDZE	2
	Apt Elev	4

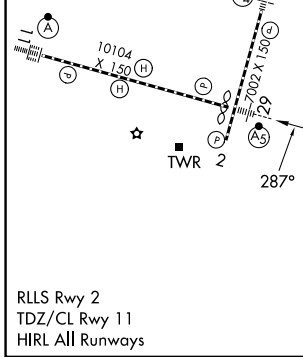
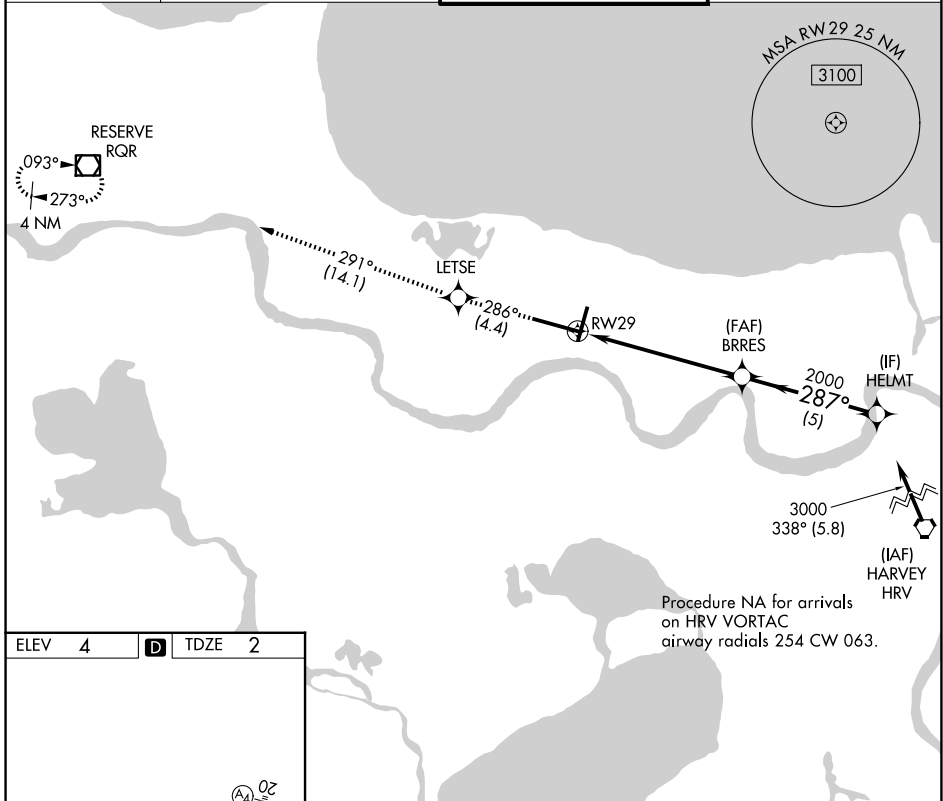
RNAV (RNP) Z RWY 29

LOUIS ARMSTRONG NEW ORLEANS INTL (MSY)

▼ For uncompensated Baro-VNAV systems, procedure NA below -1°C (31°F) or above 54°C (130°F). GPS Required.

MALSR  MISSED APPROACH: Climb to 3000 on track 286° to LETSE and on track 291° to RQR VOR/DME and hold.

D-ATIS 127.55	NEW ORLEANS APP CON 125.5 350.35 (W) 133.15 290.3 (E)	NEW ORLEANS TOWER 119.5 254.3	GND CON 121.9 273.525
-------------------------	---	---	---------------------------------



3000	↑	tr 286°	LETSE	tr 291°	RQR	VGSI and RNAV glidepath not coincident (VGSI Angle 3.00/TCH 68).
3000	RWY 29		BRRES	2000	287°	HELMT
	6.1 NM			2000		GP 3.00° TCH 53
		5 NM				
CATEGORY	A	B	C	D		
RNP 0.30 DA	382/40		380 (400-¾)			

AUTHORIZATION REQUIRED

SC-4, 11 JUN 2026 to 09 JUL 2026

SC-4, 11 JUN 2026 to 09 JUL 2026