

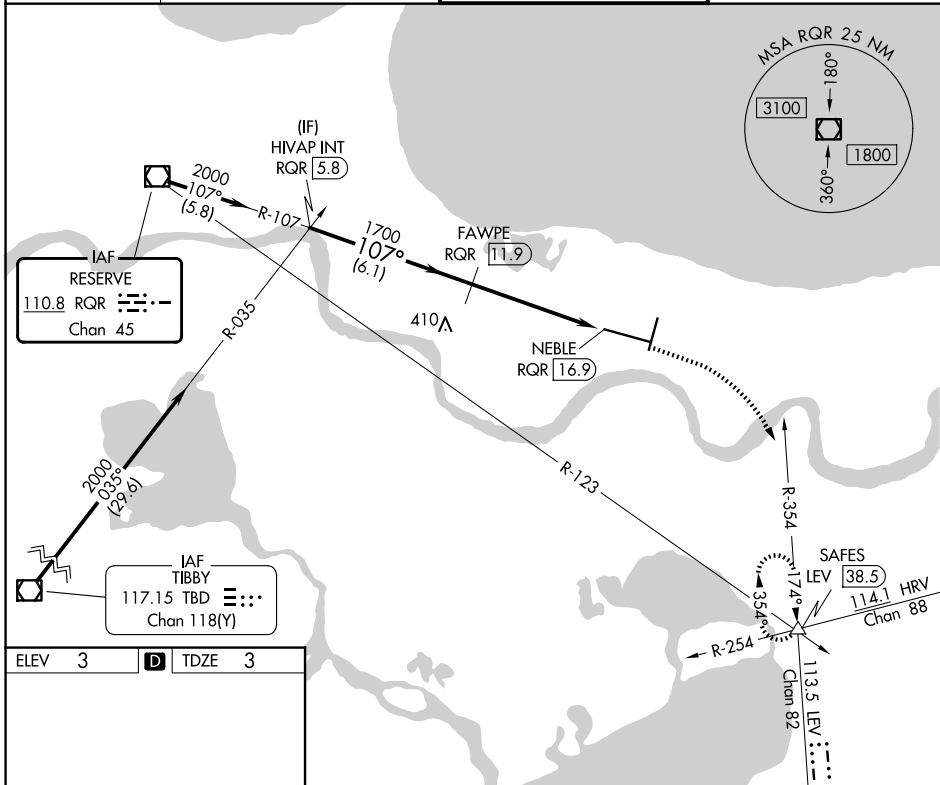
VOR/DME RQR	APP CRS	Rwy Ldg TDZE	9800
110.8	107°	Apt Elev	3
Chan 45			

VOR/DME RWY 11

LOUIS ARMSTRONG NEW ORLEANS INTL (MSY)

	MISSED APPROACH: Climb to 800 then climbing right turn to 2000 on heading 130° and on LEV VORTAC R-354 to SAFES INT/LEV 38.5 DME and hold.

D-ATIS 127.55	NEW ORLEANS APP CON 125.5 350.35 (W) 133.15 290.3 (E)	NEW ORLEANS TOWER 119.5 254.3	GND CON 121.9 273.525
-------------------------	---	---	---------------------------------

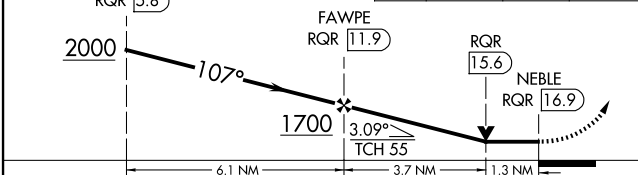


SC-4, 11 JUN 2026 to 09 JUL 2026

SC-4, 11 JUN 2026 to 09 JUL 2026

ELEV 3	D	TDZE 3
--------	----------	--------

VGSIs and descent angles not coincident (VGSi Angle 2.80/TCH 73).			
HIVAP INT RQR 5.8	FAWPE RQR 11.9	RQR 15.6	NEBLE RQR 16.9



CATEGORY	A	B	C	D
S-11	460/24	457 (500-½)	460/45	457 (500-¾)
CIRCLING	520-1 517 (600-1)	540-1 537 (600-1)	580-1½ 577 (600-1½)	580-2 577 (600-2)