


LOM IA 329	APP CRS 280°	Rwy Ldg TDZE Apt Elev	9129 588 592
----------------------	------------------------	-----------------------------	---

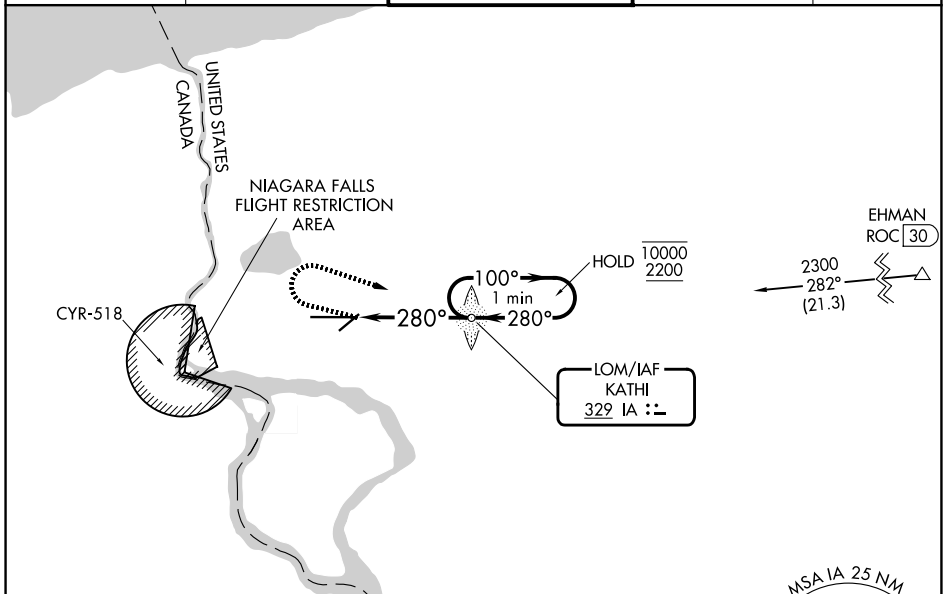
NDB RWY 28

NIAGARA FALLS INTL (IAG)

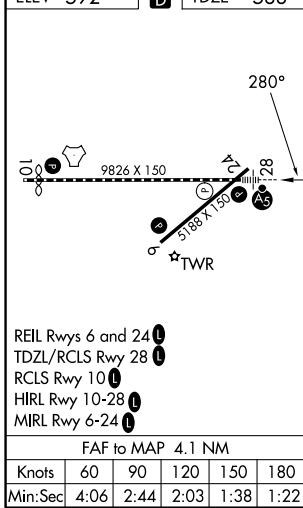
▼ Circling Rwy 6 NA at night.
▲ Rwy 28 helicopter visibility reduction below RVR 4000 NA.
 Circling NA for Cat E southeast of Rwy 6-24.
 For inop ALS, increase visibility Cats A/B to RVR to 5500, Cats C/D/E to 1 3/4 SM.

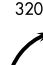


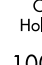
MALSR

 MISSED APPROACH: Climb to 1600 on heading 294° then climbing right turn to 3200 direct KATHI LOM and hold, continue climb-in-hold to 3200.

ATIS 120.8 269.4	BUFFALO APP CON 126.5 317.6	NIAGARA TOWER ★ 118.5 (CTAF) 0 349.0	GND CON 125.3 275.8	UNICOM 122.95
----------------------------	---------------------------------------	--	-------------------------------	-------------------------



ELEV 592	D	TDZE 588
----------	----------	----------



1600	3200	IA	IA LOM KATHI	One Minute Holding Pattern	
hdg 294°					
280°		100° → 10000 ← 280° 2200			
280°		2000			
4.1 NM					
CATEGORY	A	B	C	D	E
S-28	1200/40	612 (700-3/4)	1200-1 3/8 612 (700-1 3/8)		
CIRCLING	1200-1	608 (700-1)	1280-2 688 (700-2)	1280-2 1/4 688 (700-2 1/4)	1280-2 1/2 688 (700-2 1/2)

NE-2, 11 JUN 2026 to 09 JUL 2026

NE-2, 11 JUN 2026 to 09 JUL 2026