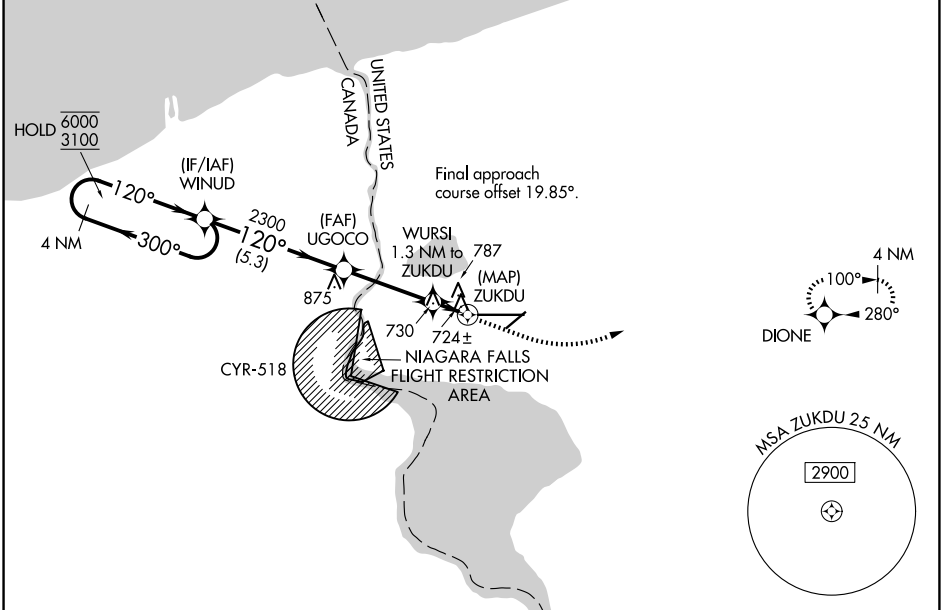


WAAS CH <b>82147</b> <b>W10A</b>	APP CRS <b>120°</b>	Rwy Ldg TDZE Apt Elev	<b>9126</b> <b>589</b> <b>592</b>
--	------------------------	-----------------------------	---

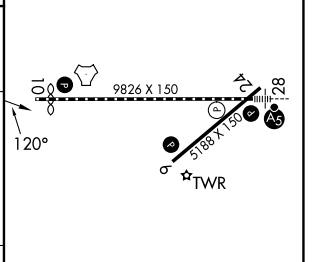
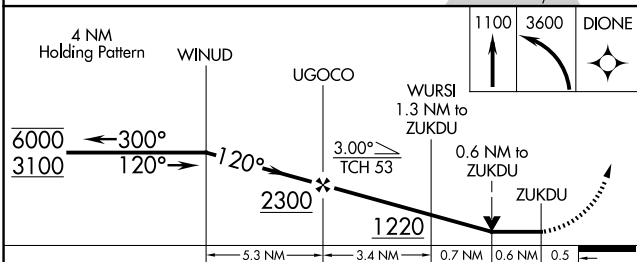
# RNAV (GPS) RWY 10

NIAGARA FALLS INTL (IAG)

RNP APCH - GPS.		MISSED APPROACH: Climb to 1100, then climbing left turn to 3600 direct DIONE and hold, continue climb-in-hold to 3600.		
▼ Rwy 10 helicopter visibility reduction below 3/4 SM NA. Circling NA for ▲ Cat E southeast of Rwy 6-24. Circling Rwy 6 NA at night.				
ATIS <b>120.8 269.4</b>	BUFFALO APP CON <b>126.5 317.6</b>	NIAGARA TOWER* <b>118.5 (CTAF) 0 349.0</b>	GND CON <b>125.3 275.8</b>	UNICOM <b>122.95</b>



ELEV 592	<b>D</b>	TDZE 589
----------	----------	----------



CATEGORY	A	B	C	D	E
LP MDA	980-1	391 (400-1)	980-1 1/8	391 (400-1 1/8)	
LNAV MDA	1040-1	451 (500-1)	1040-1 3/8	451 (500-1 3/8)	
CIRCLING	1100-1	508 (600-1)	1280-2 688 (700-2)	1280-2 1/4 688 (700-2 1/4)	1280-2 1/2 688 (700-2 1/2)

- REIL Rwy 6 and 24
- TDZL/RCLS Rwy 28
- RCLS Rwy 10
- HIRL Rwy 10-28
- MIRL Rwy 6-24

NE-2, 11 JUN 2026 to 09 JUL 2026

NE-2, 11 JUN 2026 to 09 JUL 2026